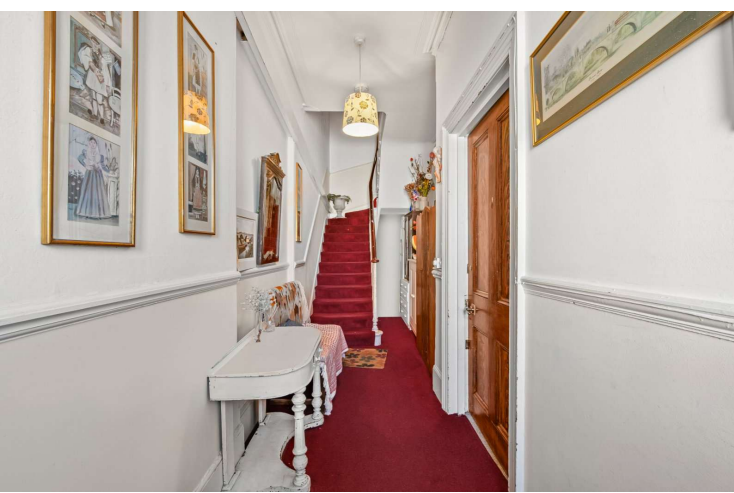




Mount Ararat Road  
Richmond, TW10

CHESTERTONS





This property is being sold by informal tender, with best and final offers to be submitted no later than 12:00 noon on Friday 15th May 2026.

A rare opportunity to acquire an elegant semi-detached Victorian residence on one of the most sought-after roads on Richmond Hill. The house now requires refurbishment and modernisation throughout, presenting an exceptional opportunity to create a magnificent family home tailored entirely to one's own specification, with significant potential to enhance and remodel, subject to the usual consents.

Richmond Hill is a charming and close-knit community, centred around its picturesque village and set on the doorstep of the world-famous Richmond Park. The area offers an excellent balance of city and country living, combining expansive green spaces with strong transport links into central London.

The location is particularly well suited to families, with an outstanding selection of state and private schools nearby, including The Vineyard, King's House, Old Vicarage, Marshgate Primary School and Thomas's College.

Everyday amenities such as dry cleaning, local supermarkets and coffee shops are close at hand, alongside a popular selection of pubs, cafés and restaurants. Local favourites include Richmond Hill Bakery, The Marlborough and La Luna di Luca, while the riverside Duck Pond Market takes place every weekend, offering ethically sourced food, art and crafts. Richmond town centre provides a broader retail and lifestyle offering, from independent boutiques and historic cobbled lanes to leading High Street brands, a large Waitrose supermarket and the renowned Third Space gym.

- The seller invites serious offers from committed buyers
- A handsome, semi-detached, Victorian home
- Circa 2,810 sq ft
- Potential to remodel (subject to planning permission being granted)
- Opportunity to renovate
- Driveway for multiple cars

Guide Price £3,250,000

Score	Energy rating	Current	Potential
92+	A		
81-91	B		
69-80	C		80 C
55-68	D	68 D	
39-54	E		
21-38	F		
1-20	G		

**Tenure:** Freehold

**Service Charge:** £0

**Ground Rent:** £0

**Local Authority:** London Borough Of Richmond Upon Thames

**Council Tax Band:** H

*Chestertons South West Prime Sales*

23a Friars Stile Road

Richmond

Surrey

TW10 6NH

swprime@chestertons.co.uk

Mount Ararat Road, TW10



Approx Gross Internal Area 2800 Sq Ft - 260.12 Sq M  
 Approx. Floor Area Including Restricted Heights (excluding sheds) 2810 Sq Ft - 261.05 Sq M

Every attempt has been made to ensure the accuracy of the floor plan shown. However, all measurements, fixtures, fittings, and data shown are approximate interpretations and for illustrative purposes only. Measured according to the RICS. Not To Scale.  
 www.goldens.co.uk  
 Ref. No. 030869E

Chesterton UK Services Limited trading as Chestertons for themselves and for the vendor of this property whose agents they are, give notice that (i) these particulars do not constitute any part of an offer or contract, (ii) all statements contained within these particulars are made without responsibility on the part of Chestertons or the vendor, (iii) whilst made in good faith, none of the statements contained within these particulars are to be relied upon as a statement or representation of fact, (iv) any intending purchasers must satisfy themselves by inspection or otherwise as to the correctness of each of the statements contained within these particulars, (v) the vendor does not make or give either Chestertons or any person in their employment any authority to make or give representation or warranty whatsoever in relation to this property. Wide angle lenses may be used. ©Copyright Chestertons | Chesterton UK Services Limited | Registered Office 5th Floor, The Lantern, 75 Hampstead Road, London, NW1 2PL Registered Company Number 05334580.

