

Fulham Road, London SW3

Price £1,150 per week - Unfurnished







Description

Situated in a prime Chelsea location, this fourth-floor flat offers bright and spacious living within a mansion block. The building has a resident caretaker and lift access.

The apartment is presented in excellent condition and features a large reception room that flows into a fitted, open-plan kitchen. The accommodation includes a principal bedroom with an en-suite shower room, a second double bedroom, and an additional shower room. Its elevated position ensures the apartment is filled with natural light.

Positioned on Fulham Road, the property is close to the shops and cultural attractions of Knightsbridge and South Kensington. Chelsea Green is also a short walk away, offering local amenities. Transport links are available from nearby South Kensington station, providing Circle, District, and Piccadilly line services. This apartment offers a convenient rental home in a desirable London location.

Council tax band: G.

Rent is payable on a monthly basis and you may be required to pay more than a month's rent in advance, depending on your circumstances. You will be required to pay a 1 week holding deposit following a successful offer. Tenancies with annual rents up to £50,000 will require a 5 weeks' security deposit, while those exceeding this threshold will require a 6 weeks' deposit.

Utility bills, council tax, telephone line and broadband are not included in the rent. As well as paying the rent, you may also be required to make some additional permitted payments. If your tenancy does not qualify as an AST, additional fees may apply. Please visit jll.co.uk/fees for details of fees that may be payable when renting a property.

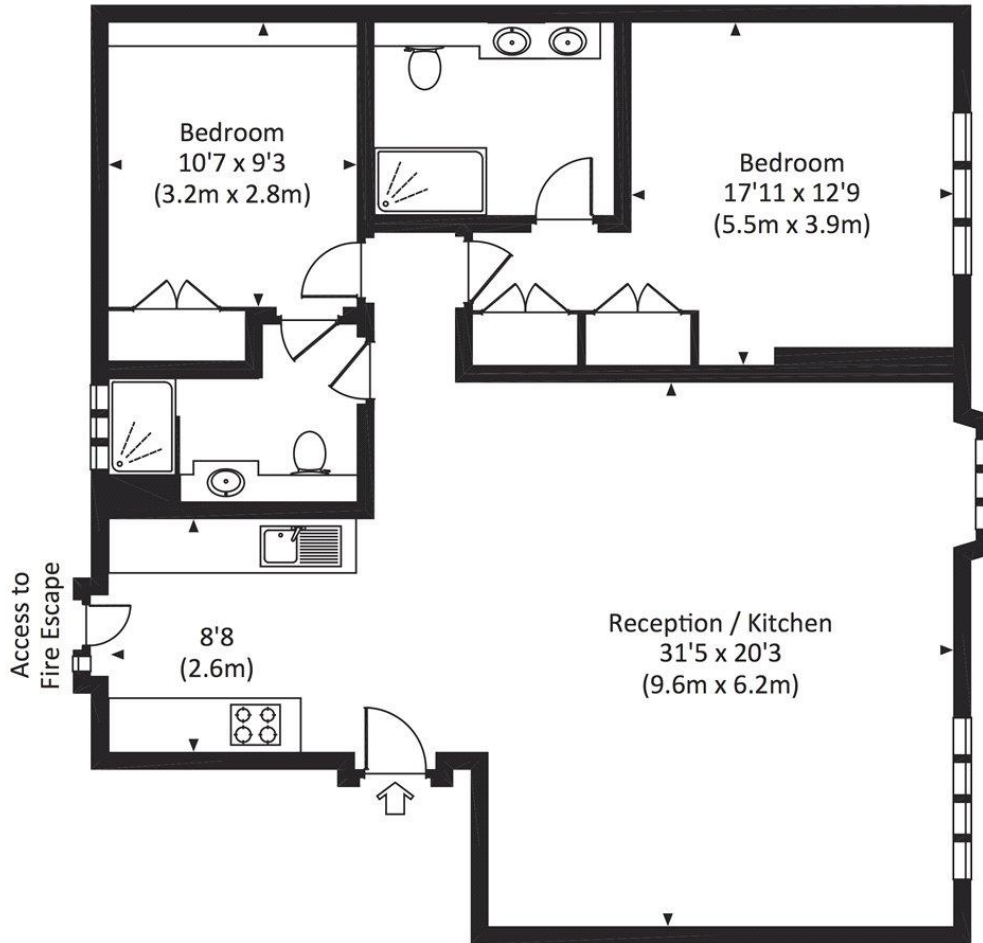
To check broadband and mobile phone coverage please visit Ofcom here ofcom.org.uk/phones-telecoms-and-internet/advice-for-consumers/advice/ofcom-checker

- Fourth-floor flat
- Two double bedrooms
- Two shower rooms
- Spacious reception room
- Open-plan kitchen
- Lift access
- Resident building caretaker
- Prime Chelsea location opposite Pelham Crescent gardens
- Close to South Kensington
- Approx. 976 sq ft (90 sq m)

Floorplan

976 sq ft | 91 sq m

Approx. gross internal area
976 Sq Ft. / 90.7 Sq M.



FOURTH FLOOR



All measurements have been made in accordance with RICS Code of Measuring Practice which are approximate only and only for illustrative purposes. For the avoidance of doubt, Dowling Jones Design shall not be liable for any reliance on these measurements. © 2017 www.dowlingjones.com 020 7610 9933

Chelsea
2 Cale Street,
London SW3 3QU
+4420 7399 5010
saleschelsea@jll.com

Urban living, your way.

jll.co.uk/residential

© 2019 Jones Lang LaSalle IP, Inc. All rights reserved. All information contained herein is from sources deemed reliable; however, no representation or warranty is made to the accuracy thereof.

