

Dunworth Mews, W11

£4,950 Per calendar month

Dexters



Dunworth Mews, W11

A beautifully presented three double bedroom, two bathroom mews house set within a secure gated development in the heart of Notting Hill. The property offers a spacious open-plan kitchen and reception room, three generous double bedrooms including a principal en-suite, wooden flooring throughout the living space.

Situated just off the world-famous Portobello Road, this charming mews house is moments from Notting Hill's boutiques, cafés, restaurants and amenities. Ladbroke Grove and Notting Hill Gate stations are both within easy walking distance, offering excellent transport links across London.

Features

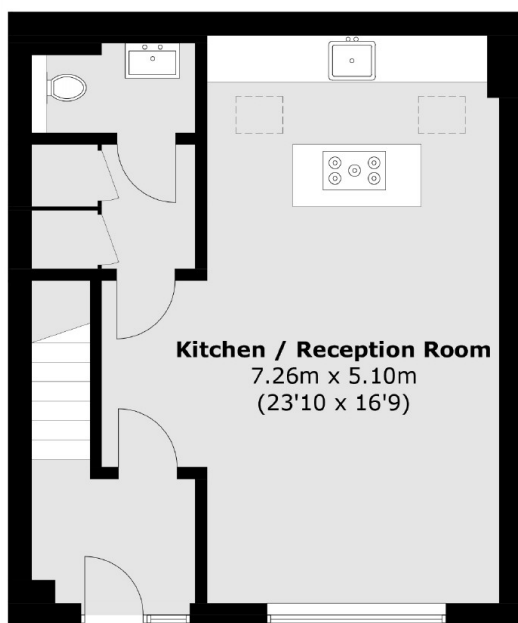
- Mews House
- Three Bedrooms
- Two Bathrooms
- Portobello Road
- Open Plan
- Gated



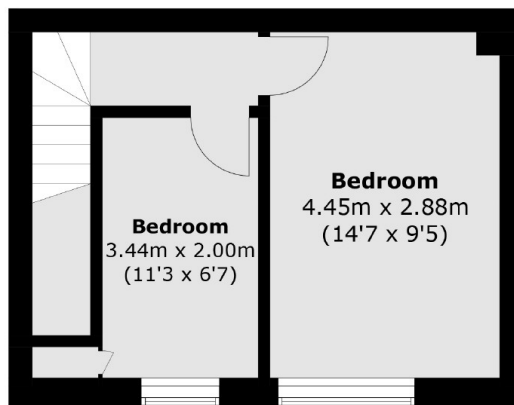




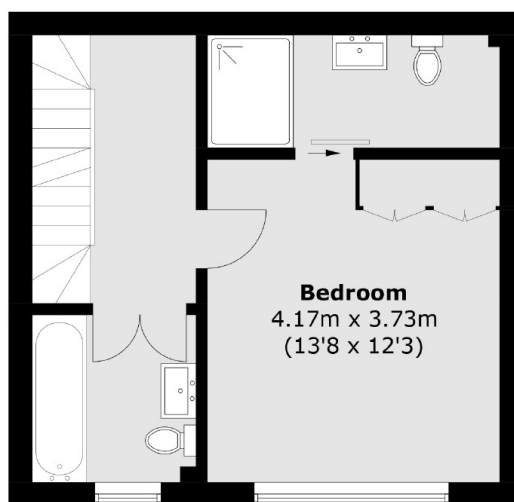
Dunworth Mews, London, W11



Ground Floor



Second Floor



First Floor

Total area (approx.): 105.6 sq. m (1,136.5 sq. ft)