



Hereford Road, London, E3

BUTLER & STAG



Immaculate one bedroom apartment offering a blend of contemporary living and convenience, situated within a popular gated development in trendy Bow.



- One Bedroom Apartment
- Immaculately Presented
- Allocated Car Parking Space
- Furnished
- Secure Gated Development
- Open-Plan Kitchen / Living
- Convenient Bow Location
- Available from 10th June 2026

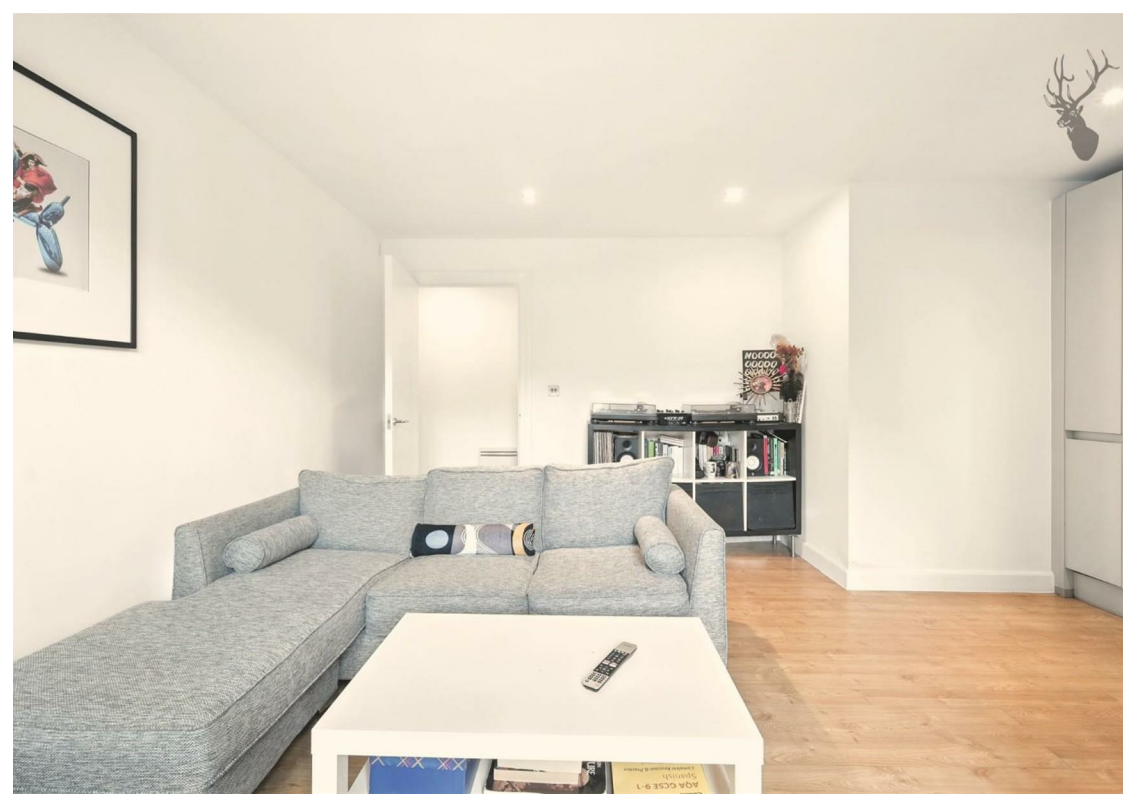
Set on the first floor of a secure, well-maintained block, the location offers easy access to a range of amenities on Roman Road, the wonderful Victoria Park and excellent transport links, including Bow Road and Mile End underground stations.

The apartment itself is smart and modern, featuring a welcoming open-plan kitchen / living space with access to a private balcony, a generous double bedroom, contemporary bathroom and hallway storage. An unquestionable bonus is the inclusion of an allocated car parking space within the gates of the development.

Perfectly suited to a single professional or couple, this furnished property is available from 10th June 2026.

EPC Rating C
Council Tax Band D





Rosegate House

Approx. Gross Internal Area 48.9 Sq M (526.3 Sq Ft)

BUTLER & STAG



Measurements are approximate and for illustration purposes only. While we do not doubt the accuracy and completeness, we advise you conduct a careful independent assessment of the property to determine monetary value.
© @modephoto.uk www.modephoto.co.uk

IMPORTANT NOTICE - These particulars have been prepared in good faith and they are not intended to constitute part of an offer or contract. We have not performed a structural survey on this property and the services, appliances and specific fittings have not been tested. All photographs, measurements, floor plans and distances referred to are given as a guide and should not be relied upon.

BUTLER & STAG

☎ 020 8102 1236

🏠 508 Roman Road, Bow, London, E3 5LU

✉ bow@butlerandstag.com

www.butlerandstag.uk