



## **Cholmley Gardens, NW6**

**£700,000**

**Dexters**



## Cholmley Gardens, NW6

This spacious two bedroom lateral apartment is located within one of West Hampstead's most prestigious mansion blocks, and offers secure communal gardens, tennis court and external storage.

Cholmley Gardens is a popular family orientated development, conveniently located near to the versatile transport links of West Hampstead (Jubilee line, London Overground and Thameslink) with trendy West End Lane on your doorstep.

### Features

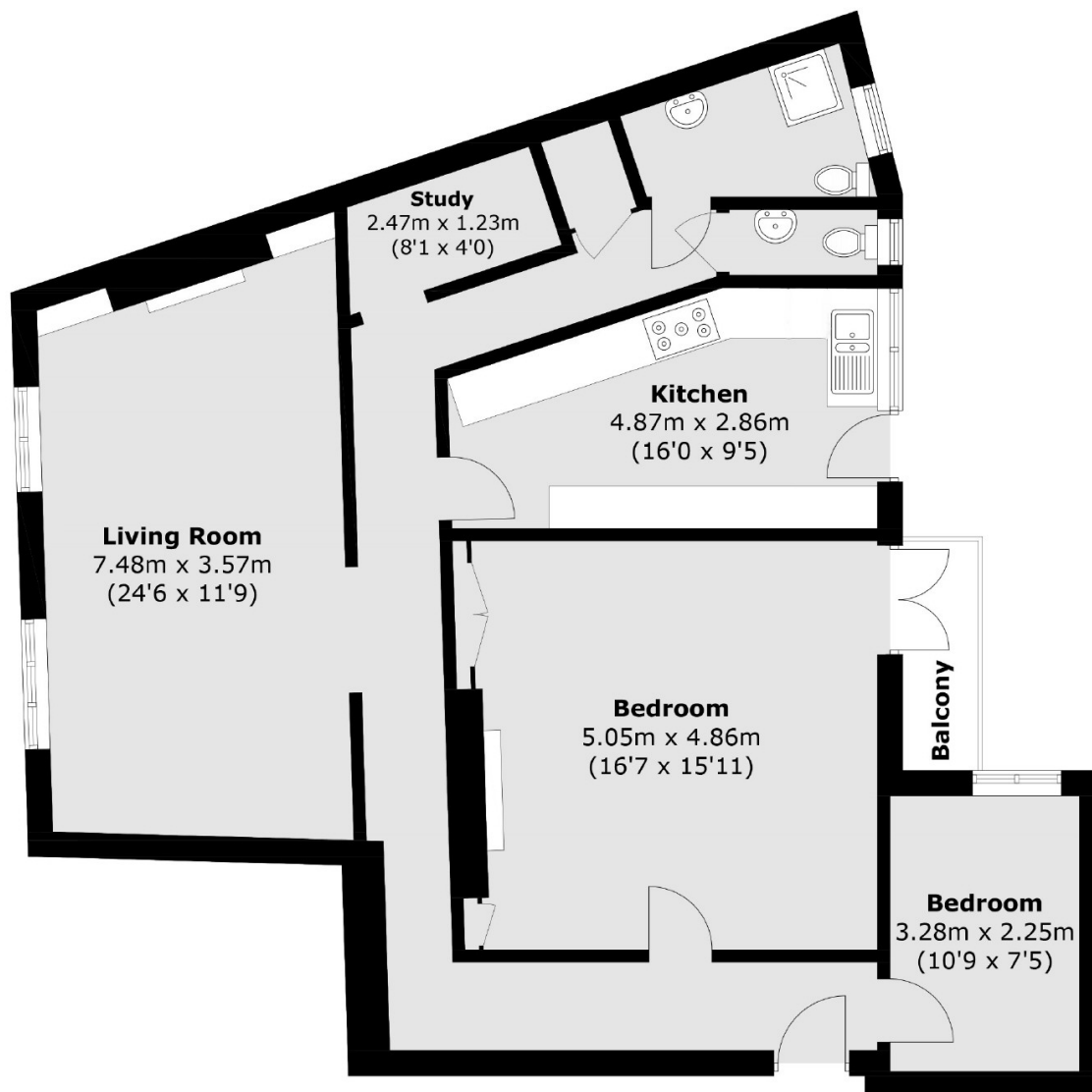
- Two Bedrooms
- Communal Gardens
- Tennis Courts
- Double Glazing
- Recently Refurbished
- Share of Freehold







# Cholmley Gardens, London, NW6



Total area (approx.): 101.1 sq. m (1,088.2 sq. ft)  
Balcony area (approx.): 2.4 sq. m (25.8 sq. ft)

**Dexters**

West Hampstead Sales  
349 West End Lane  
London  
NW6 1LT  
Sales  
020 7644 9300

Energy Rating: C. We aim to make our particulars both accurate and reliable. However they are not guaranteed; nor do they form part of an offer or contract. If you require clarification on any points then please contact us, especially if you're traveling some distance to view. Please note that appliances and heating systems have not been tested and therefore no warranties can be given as to their good working order.

 **RICS** | Regulated  
Estate Agent  
and Letting Agent

[dexters.co.uk](http://dexters.co.uk)