



Chiswick High Road

Chiswick, W4

£1,425 pcm

Chestertons are pleased to offer this lovely raised ground floor 2 bedroom 1 bathroom conversion flat Ideally located on the Chiswick High Road, moments from the River Thames, Kew Bridge train station and Gunnersbury tube and train station.

CHESTERTONS



Chiswick High Road

Chiswick, W4

- ****AVAILABLE WITH ZERO DEPOSIT****
- Lovely raised ground floor 2 bedroom 1 bathroom conversion flat
- Ideally located on the Chiswick High Road
- Spacious reception room open modern fitted kitchen
- EPC rating:C



**** VIDEO TOUR AVAILABLE** "AVAILABLE WITH ZERO DEPOSIT" **** Chestertons are pleased to offer this lovely raised ground floor 2 bedroom 1 bathroom conversion flat.

The accommodation comprises, 2 bedrooms, spacious reception room open onto modern fitted kitchen with wooden floor & modern fitted shower room.

Ideally located on the Chiswick High Road, moments from the River Thames, Kew Bridge train station and Gunnersbury tube and train station, with easy access to the A4/M4.

Tenure: To be advised

Part Furnished

Additional tenant charges apply (fees apply to non-AST tenancies only)
 Tenancy Agreement Fee: £300
 References per Tenant/Guarantor: £60
 Inventory check (approx. £100 – £250 inc. VAT)
[chestertons.com/property-to-rent/applicable-fees](https://www.chestertons.com/property-to-rent/applicable-fees)

Energy Efficiency Rating		
	Current	Potential
Very energy efficient - lower running costs		
(92+) A		
(81-91) B		
(69-80) C	77	78
(55-68) D		
(39-54) E		
(21-38) F		
(1-20) G		
Not energy efficient - higher running costs		
England, Scotland & Wales EU Directive 2002/91/EC		

Chestertons Chiswick Lettings

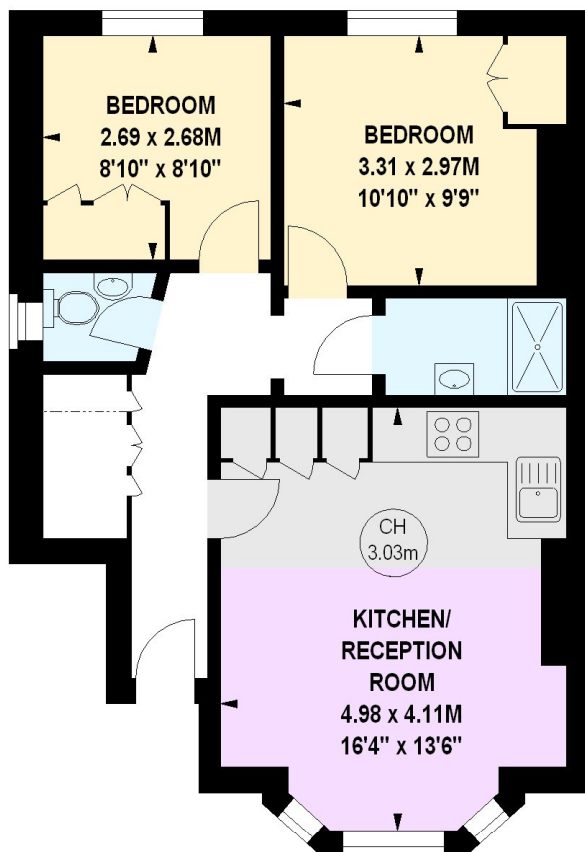
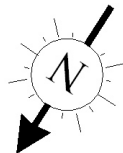
155 Chiswick High Road
 Chiswick
 London
 W4 2DT
chiswick.lettings@chestertons.com
 02087473133
[chestertons.com](https://www.chestertons.com)

Chiswick Hight Road, W4

Approximate gross internal area

51.37 sq m / 553 sq ft

Key :
CH - Ceiling Height



Raised Ground Floor

The floor plan is not to scale and measurements and areas shown are approximate and therefore should be used for illustrative purposes only.

The plan has been prepared in accordance with the RICS code of Measuring Practice and whilst we have confidence in the information produced, it must not be relied on.

If there is any aspect of particular importance, you should carry out or commission your own inspection of the property.

Copyright of FeaturePRO.