

HUNTERS[®]

HERE TO GET *you* THERE



Manor Close

KT4 7PJ

£3,200 Per Month





Area Map



Energy Efficiency Rating		Current	Potential
Very energy efficient - lower running costs			
(92 plus) A			85
(81-91) B			
(69-80) C		70	
(55-68) D			
(39-54) E			
(21-38) F			
(1-20) G			
Not energy efficient - higher running costs			
England & Wales		EU Directive 2002/91/EC	

Environmental Impact (CO ₂) Rating		Current	Potential
Very environmentally friendly - lower CO ₂ emissions			
(92 plus) A			85
(81-91) B			
(69-80) C		70	
(55-68) D			
(39-54) E			
(21-38) F			
(1-20) G			
Not environmentally friendly - higher CO ₂ emissions			
England & Wales		EU Directive 2002/91/EC	

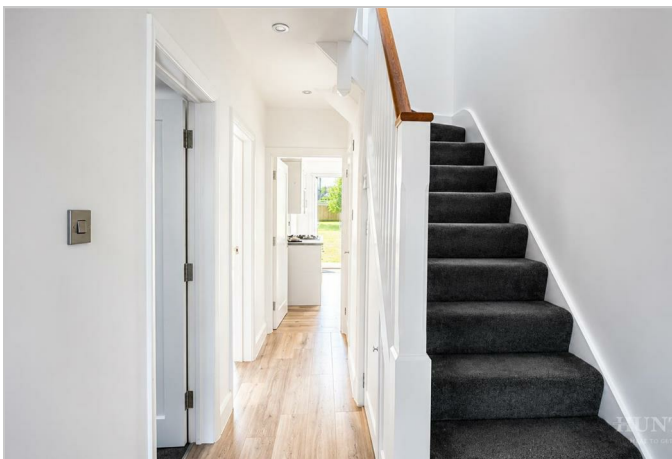


Manor Close, Worcester Park
Total Area: 90.3 m² ... 972.16' (excluding garage)

- Newly refurbished throughout
- Downstairs WC
- Garage
- Available immediately

- Two spacious reception rooms
- Contemporary family bathroom
- Off-street parking

- Newly fitted modern kitchen
- Private rear garden
- Excellent location close to Worcester Park Station Within catchment of well-regarded local schools



These particulars are intended to give a fair and reliable description of the property but no responsibility for any inaccuracy or error can be accepted and do not constitute an offer or contract. We have not tested any services or appliances (including central heating if fitted) referred to in these particulars and the purchasers are advised to satisfy themselves as to the working order and condition. If a property is unoccupied at any time there may be reconnection charges for any switched off/disconnected or drained services or appliances - All measurements are approximate. **THINKING OF SELLING OR LETTING?** If you are thinking of selling or letting your home or just curious to discover the value of your property, Hunters would be pleased to provide free, no obligation sales and marketing advice. Even if your home is outside the area covered by our local offices we can arrange a Market Appraisal through our national network of Hunters estate agents.