



Connells

The Nurseries
Northampton



Property Description

Connells are delighted to present this bright, modern three-bedroom apartment on the first floor of the highly sought-after The Nurseries development. Boasting a superb blend of space, light and location, this property is perfect for first-time buyers, growing families or savvy investors.

Step through a private porch into a welcoming entrance hall that flows seamlessly into a spacious open-plan living/dining room. Large windows which flood the space with natural light and frame panoramic views across the tranquil Midsummer Meadow, creating a perfect backdrop for entertaining or relaxing evenings at home. The contemporary kitchen is fitted with sleek cabinetry, plentiful storage and generous work-top space, making everyday cooking a pleasure. Three Double Bedrooms – Each bedroom is generously proportioned creating a comfortable retreat. The family bathroom is finished with a three piece suite. One allocated off-street parking space adds convenience in a busy town-centre setting.

With the university, hospital and town-centre amenities all within easy reach, this apartment is a highly attractive rental prospect.

Entrance Porch

Enter via wooden door to the front aspect.

Entrance Hall

Enter via wooden door to the front aspect. Intercom. Storage cupboard. Wall mounted radiator.

Lounge

Double glazed window to the front aspect. Wall mounted radiator. TV point.

Kitchen

Wall and base units. Worksurfaces. Sink and drainer unit. Space for white goods. Electric hob with hood over. Double glazed window to the front aspect. Boiler.

Bedroom One

Double glazed window to the rear aspect. Wall mounted radiator.

Bedroom Two

Double glazed window to the rear aspect. Wall mounted radiator.

Bedroom Three

Double glazed window to the front aspect. Wall mounted radiator.

Bathroom

Bath with shower over, wash hand basin and low level WC. Wall mounted radiator.

Outside

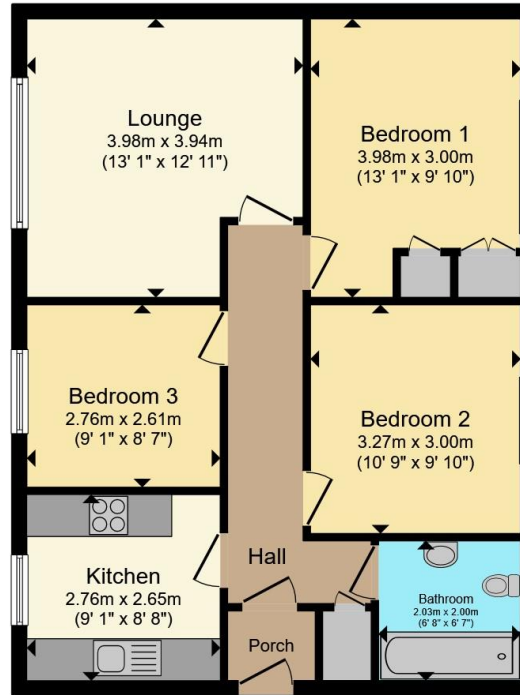
Parking

One allocated parking space. Further visitor parking.









Ground Floor

Total floor area 66.5 m² (716 sq.ft.) approx

This floor plan is for illustrative purposes only. It is not drawn to scale. Any measurements, floor areas (including any total floor area), openings and orientation are approximate. No details are guaranteed, they cannot be relied upon for any purpose and they do not form part of any agreement. No liability is taken for any error, omission or misstatement. A party must rely upon its own inspection(s). Powered by www.propertybox.io

Connells

To view this property please contact Connells on

T 01604 638 281
E northampton@connells.co.uk

6 Wood Hill
 NORTHAMPTON NN1 2DA

EPC Rating: C Council Tax
 Band: C

Service Charge:
 1054.20

Ground Rent:
 172.76

Tenure: Leasehold

view this property online connells.co.uk/Property/NHT415082

This is a Leasehold property with details as follows; Term of Lease 150 years from 12 Dec 2000. Should you require further information please contact the branch. Please Note additional fees could be incurred for items such as

1. MONEY LAUNDERING REGULATIONS Intending purchasers will be asked to produce identification documentation at a later stage and we would ask for your co-operation in order that there will be no delay in agreeing the sale. 2. These particulars do not constitute part or all of an offer or contract. 3. The measurements indicated are supplied for guidance only and as such must be considered incorrect. Potential buyers are advised to recheck measurements before committing to any expense. 4. We have not tested any apparatus, equipment, fixtures, fittings or services and it is in the buyers interest to check the working condition of any appliances.

Connells Residential is registered in England and Wales under company number 1489613, Registered Office is Cumbria House, 16-20 Hockliffe Street, Leighton Buzzard, Bedfordshire, LU7 1GN. VAT Registration Number is 500 2481 05.



See all our properties at www.connells.co.uk | www.rightmove.co.uk | www.zoopla.co.uk

Property Ref: NHT415082 - 0006