

FLETCHERS

ESTATE AGENTS



Elsham Road, W14

£675,000

A well appointed, two bedroom, two bathroom converted flat situated within a striking Victorian building on the borders of Holland Park. Located on the raised ground floor, the property benefits from exceptional ceiling height throughout and maintains many of the original period features. There is a spacious separate reception room with brilliant ceiling height, hardwood floor and both the original cornice and shutters on the windows maintained adding character. This wonderful entertaining space is complete with an attractive feature bay window providing plenty of natural light to this space. To the rear of the reception room there is a semi separate kitchen complete with fitted appliances. There is also a second bedroom to the rear of the flat that the current owners use as a nursery.

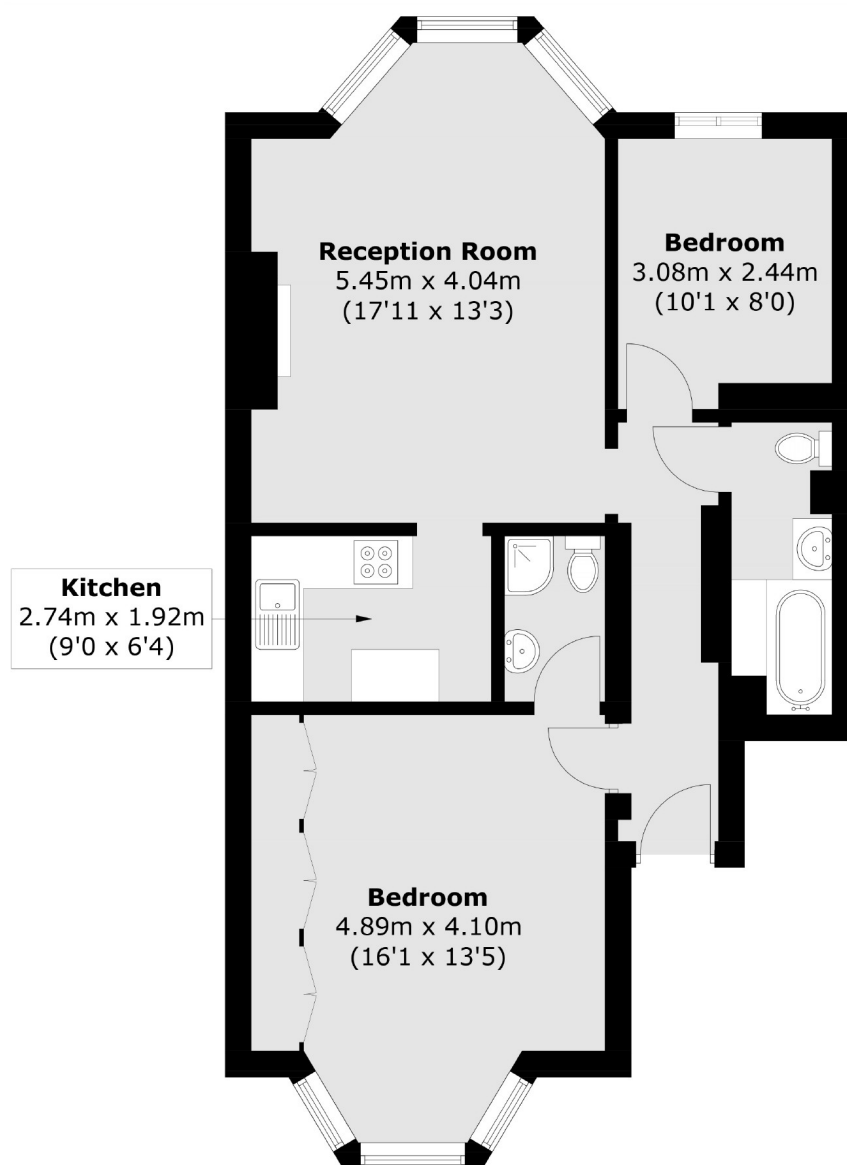
To the front, there is a family bathroom and a spacious master bedroom benefitting from plenty of built in storage and an en suite shower room as well as another feature bay window overlooking the communal gardens. The flat is offered to the market with a share of the freehold and is an excellent option for downsizers, first time buyers and investors alike.

Elsham Road is a quiet tree lined street in the Royal Borough of Kensington & Chelsea, with excellent access to local amenities in Holland Park, High Street Kensington and Westfield Shopping Centre. The green space of Holland Park is nearby only half a mile walk away. There are excellent transport links under half a mile away with Kensington Olympia (Overground line), and Shepherd's Bush station (Overground & Central line).

• High Ceilings Throughout • Borders Of Holland Park • Excellent Condition • Share Of Freehold • Two Bathrooms • Communal Garden •

FLETCHERS

ESTATE AGENTS



Total area (approx.): 65.9 sq. m (709.3 sq. ft)

Fletchers Brook Green Sales
144 Shepherds Bush Road, Hammersmith, London, W6 7PB
020 7603 1415
brookgreensales@fletcherestates.com

Energy Rating: . We aim to make our particulars both accurate and reliable. However they are not guaranteed; nor do they form part of an offer or contract. If you require clarification on any points then please contact us, especially if you're traveling some distance to view. Please note that appliances and heating systems have not been tested and therefore no warranties can be given as to their good working order.