



Clifton Road, Eccles
Manchester



In Excess of £380,000

Clifton Road

Eccles, Manchester

BUILT IN 2017 IS THIS THREE DOUBLE BEDROOM END TERRACE LOCATED IN THE DESIRABLE MONTON VILLAGE! THE PROPERTY FEATURES THREE DOUBLE BEDROOMS, THREE BATHROOMS, OFF ROAD PARKING AND A LARGE REAR GARDEN WITH SIDE ACCESS!

Council Tax band: D

Tenure: Leasehold

- MODERN THREE STORY END TERRACED PROPERTY
- SITUATED IN THE HEART OF MONTON VILLAGE
- LOUNGE AND OPEN PLAN CONTEMPORARY KITCHEN/DINING ROOM
- DRIVEWAY TO THE FRONT PROVIDING OFF-ROAD PARKING AND HAS ACCESS ROUND THE SIDE!
- LARGE LOW MAINTENANCE REAR GARDEN!
- THREE DOUBLE BEDROOMS
- BEAUTIFULLY PRESENTED THROUGHOUT
- EN-SUITE TO MASTER BEDROOM, MODERN FAMILY BATHROOM AND DOWNSTAIRS W.C
- WITHIN EASY ACCESS OF EXCELLENT TRANSPORT LINKS INTO SALFORD QUAYS, MEDIA CITY AND MANCHESTER CITY CENTRE
- JUST A 10 MINUTE WALK TO ECCLES TRAIN STATION AND SWINTON PARK/LOOP LINE



HILLS



Entrance Hallway

Lounge

15' 9" x 11' 8" (4.81m x 3.56m)

Downstairs W.C.

6' 2" x 3' 9" (1.89m x 1.14m)

Kitchen / Diner

14' 11" x 9' 11" (4.55m x 3.01m)

Landing

Bedroom Two

15' 1" x 9' 10" (4.60m x 3.00m)

Bedroom Three

11' 10" x 8' 2" (3.60m x 2.49m)

Bathroom

8' 2" x 7' 6" (2.49m x 2.29m)

Landing

Bedroom One

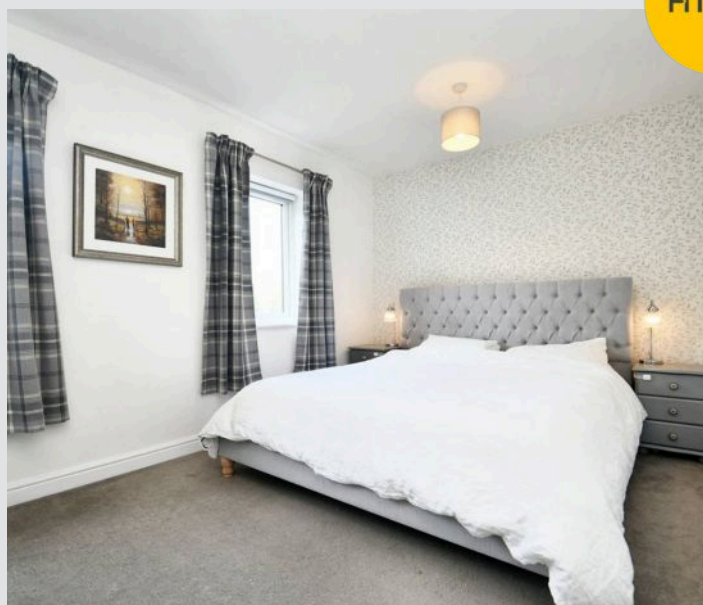
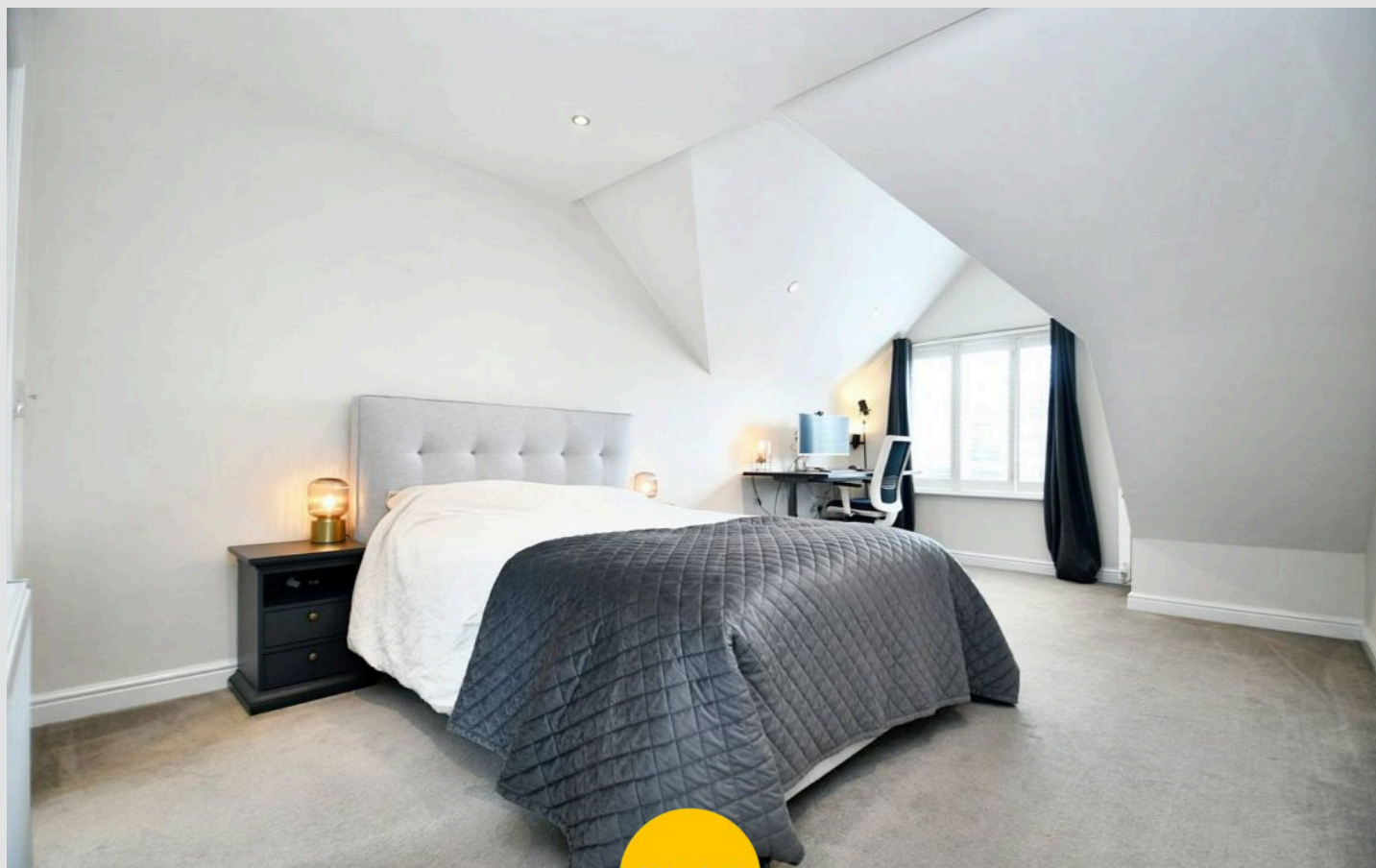
18' 11" x 11' 8" (5.76m x 3.56m)

En suite

8' 0" x 7' 6" (2.45m x 2.28m)

Office

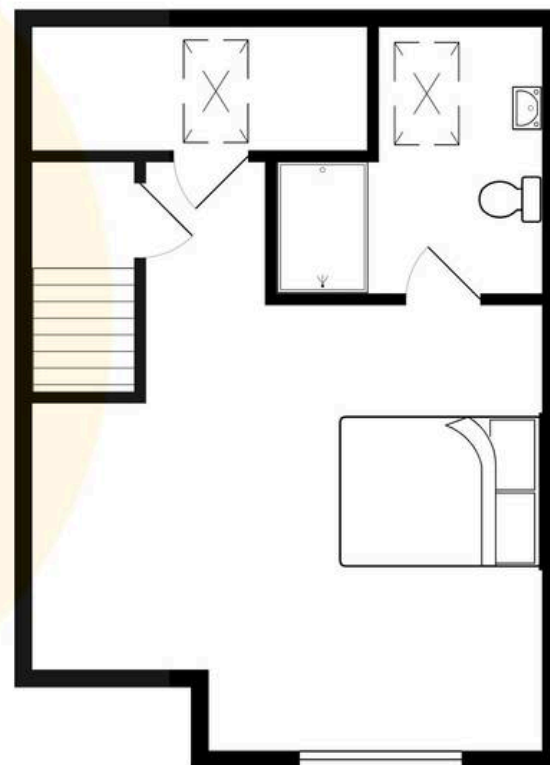
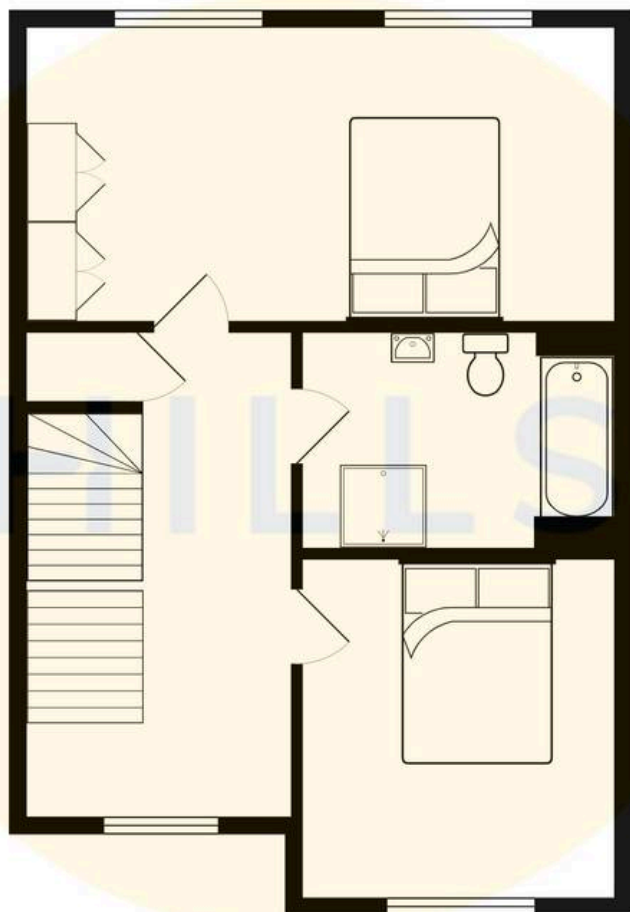
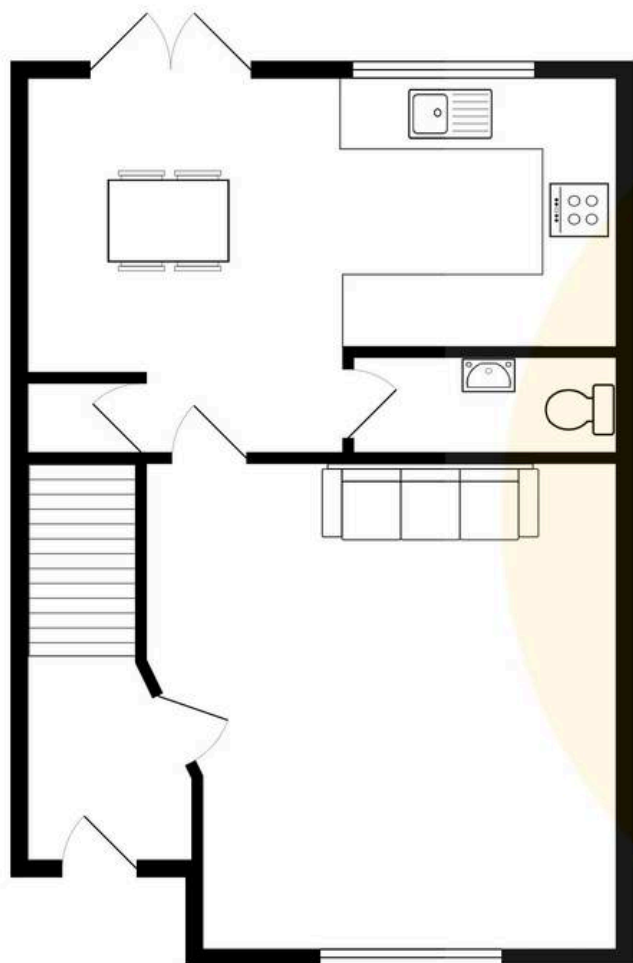
9' 8" x 6' 7" (2.94m x 2.01m)





HILLS







Hills | Salfords Estate Agent

Hills Residential, Sentinel House Albert Street – M30 0SS

0161 707 4900

sales@hills.agency

www.hills.agency/



THE PROPERTY MISDESCRIPTIONS ACT 1991 The Agent has not tested any apparatus, equipment, fixtures and fittings or services and so cannot verify that they are in working order or fit for the purpose. A Buyer is advised to obtain verification from their Solicitor or Surveyor. References to the Tenure of a Property are based on information supplied by the Seller. The Agent has not had sight of the title documents. A Buyer is advised to obtain verification from their Solicitor. You are advised to check the availability of this property before travelling any distance to view. Every effort and precaution has been made to ensure these particulars are correct and not misleading but their accuracy is not guaranteed nor do they form part of any contract. If there is any point which is of particular importance to you, please contact us and we will provide any information you require. This is advisable, particularly if you intend to travel some distance to view the property. The mention of any appliances and services within these details does not imply that they are in full and efficient working order. These particulars are in draft form awaiting Vendors confirmation of their accuracy. These details must therefore be taken as a guide only.