



**Kithill, Crewkerne TA18 8HY**



**welcome to**

**Kithill, Crewkerne**

A very well presented mid terraced house situated in this popular residential area. The property offers accommodation comprising entrance porch, living room, kitchen, three bedrooms and bathroom. Outside there are gardens to front and rear.



## Ground Floor

### Entrance Porch

Double glazed door to front. Front aspect double glazed window. Cupboard.

### Living Room

16' 5" max x 14' 2" ( 5.00m max x 4.32m )

Front aspect double glazed window. Electric fire. TV and telephone point. Two radiators.

### Kitchen

16' 4" max x 8' 3" ( 4.98m max x 2.51m )

Rear aspect double glazed window. Double glazed patio doors to rear. Fitted base and wall units. Work surfaces incorporating a sink and drainer. Tiled splashbacks. Built-in double oven and induction hob with cooker hood over. Integrated dishwasher and fridge/freezer. Breakfast bar. Space and plumbing for washing machine. Radiator.

## First Floor

### Landing

Cupboard. Access to loft. Fitted carpet.

### Bedroom One

12' x 9' 11" max ( 3.66m x 3.02m max )

Front aspect double glazed window. Cupboard. Fitted carpet. Radiator.

### Bedroom Two

8' 5" x 7' 9" ( 2.57m x 2.36m )

Rear aspect double glazed window. Cupboard. Fitted carpet. Radiator.

### Bedroom Three

8' 6" max x 6' 2" ( 2.59m max x 1.88m )

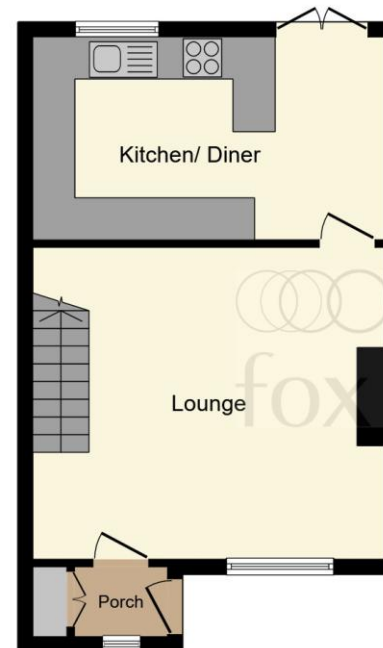
Front aspect double glazed window. Cupboard. Fitted carpet. Radiator.

### Bathroom

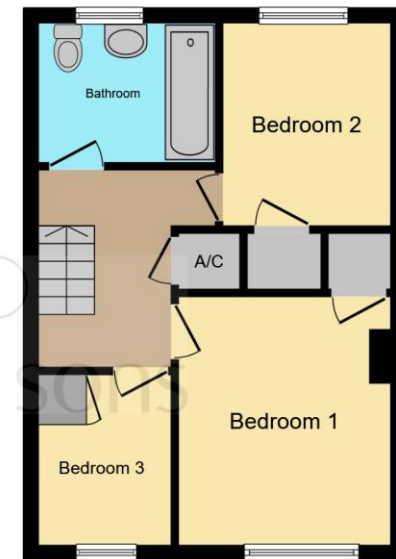
Rear aspect double glazed window. Fitted with a suite comprising a bath with shower over, wash hand basin and WC. Part tiled. Radiator.

### Outside

At the front of the house the garden is laid to stone chippings. The enclosed rear garden is mainly laid to lawn with a covered patio area. Garden shed.



Ground Floor



First Floor

This floor plan is for illustrative purposes only. It is not drawn to scale. Any measurements, floor areas (including any total floor area), openings and orientation are approximate. No details are guaranteed, they cannot be relied upon for any purpose and they do not form part of any agreement. No liability is taken for any error, omission or misstatement. A party must rely upon its own inspection(s). Powered by [www.focalagent.com](http://www.focalagent.com)



**view this property online** [fox-and-sons.co.uk/Property/CRK106562](http://fox-and-sons.co.uk/Property/CRK106562)



## welcome to Kithill, Crewkerne

- Mid Terraced House
- Three Bedrooms
- Well Presented
- Enclosed Rear Garden
- Popular Residential Area

Tenure: Freehold EPC Rating: C  
Council Tax Band: B

# £215,000



Please note the marker reflects the  
postcode not the actual property

**view this property online** [fox-and-sons.co.uk/Property/CRK106562](https://fox-and-sons.co.uk/Property/CRK106562)



Property Ref:  
CRK106562 - 0003

1. MONEY LAUNDERING REGULATIONS Intending purchasers will be asked to produce identification documentation at a later stage and we would ask for your co-operation in order that there is no delay in agreeing the sale. 2. These particulars do not constitute part or all of an offer or contract. 3. The measurements indicated are supplied for guidance only and as such must be considered incorrect. Potential buyers are advised to recheck measurements before committing to any expense. 4. We have not tested any apparatus, equipment, fixtures or services and it is in the buyers interest to check the working condition of any appliances. 5. Where an EPC, or a Home Report (Scotland only) is held for this property, it is available for inspection at the branch by appointment. If you require a printed version of a Home Report, you will need to pay a reasonable production charge reflecting printing and other costs. 6. We are not able to offer an opinion either written or verbal on the content of these reports and this must be obtained from your legal representative. 7. Whilst we take care in preparing these reports, a buyer should ensure that his/her legal representative confirms as soon as possible all matters relating to title including the extent and boundaries of the property and other important matters before exchange of contracts.

Fox & Sons is a trading name of Sequence (UK) Limited which is registered in England and Wales under company number 4268443, Registered Office is Cumbria House, 16-20 Hockliffe Street, Leighton Buzzard, Bedfordshire, LU7 1GN. VAT Registration Number is 500 2481 05.

  
fox & sons



**01460 73421**



[Crewkerne@fox-and-sons.co.uk](mailto:Crewkerne@fox-and-sons.co.uk)



1-3 Market Square, CREWKERNE, Somerset,  
TA18 7LE



**[fox-and-sons.co.uk](https://fox-and-sons.co.uk)**