

Let **UK** Home

1 Bedrooms

Flat

Located in London

£3,250 Per Month



info@letukhome.co.uk

<https://www.letukhome.co.uk/>

01795 358 886



145 Fulham Road London

SW3 6SH



Nestled in the heart of Chelsea, this charming flat at Pelham Court, 145 Fulham Road, London SW3, offers a delightful blend of comfort and convenience. Spanning an impressive 578 square feet, this well-appointed one-bedroom residence is perfect for individuals or couples seeking a stylish urban retreat.

Upon entering, you are welcomed into a spacious reception room that provides an inviting atmosphere for both relaxation and entertaining. The room is bathed in natural light, creating a warm and airy environment. The adjoining kitchen is functional and well-equipped, making it easy to prepare meals and enjoy culinary delights.

The bedroom is a serene haven, designed to ensure restful nights and peaceful mornings. It offers ample space for storage and personal touches, allowing you to create a space that truly feels like home. The flat also features a modern bathroom, complete with contemporary fixtures and fittings, ensuring both comfort and style.

Located in a vibrant area, this property is surrounded by an array of shops, cafes, and restaurants, providing a lively community atmosphere. Excellent transport links are nearby, making it easy to explore all that London has to offer.

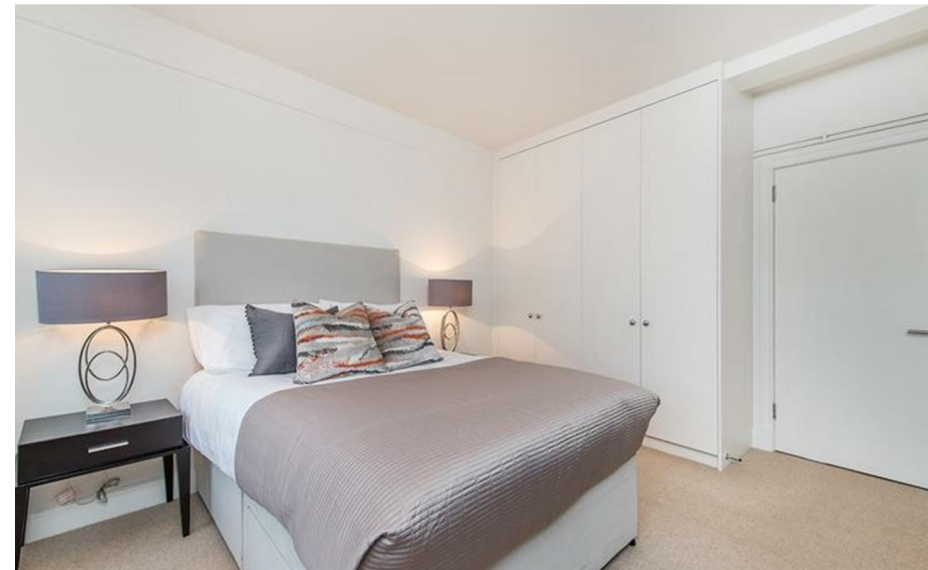
This flat at Pelham Court is not just a place to live; it is a lifestyle choice, offering the perfect balance of city living and comfort. Whether you are looking to invest or find your next home, this property is a wonderful opportunity not to be missed.

145 Fulham Road London

£3,250 Per Month

- 5th Floor
- Dedicated property manager
- Walking distance to South Kensington & Kings Road
- Recycling
- Video Entry & Lifts

- Central Chelsea location
- 24 Hour Emergency Helpline & Service
- Pets allowed
- Available furnished or unfurnished
- EPC Rating: E





Let **UK** Home

3F 2 Eastbourne Terrace
 Paddington
 London
 W2 6LG

01795 358 886

info@letukhome.co.uk

Council Tax Band: E

Local Authority:

Agents Note: Whilst every care has been taken to prepare these particulars, they are for guidance purposes only. All measurements are approximate and are for general guidance purposes only and whilst every care has been taken to ensure their accuracy, they should not be relied upon and potential buyers/tenants are advised to recheck the measurements.

Energy Efficiency Rating		Current	Potential
Very energy efficient - lower running costs			
(92 plus) A			
(81-91) B			
(69-80) C			76
(55-68) D			
(39-54) E		49	
(21-38) F			
(1-20) G			
Not energy efficient - higher running costs			
England & Wales	EU Directive 2002/91/EC		

<https://www.letukhome.co.uk/>