



Laleham Reach, KT16

£1,495,000

Waterview



A beautiful, modern built, family home set overlooking this picturesque stretch of the river with extensive landscaped gardens and stylish interiors.

Laleham Reach is a residential road running parallel to The Thames between Chertsey and Staines-upon-Thames.







Accommodation is made up of a sizeable entrance hall leading to an impressive double reception with dining area that overlooks the gardens and river from full width bi-fold doors onto the terrace. There is a large, integrated kitchen with central island, breakfast bar and utility room. There is a further lounge room with bar and a log burner with bi-fold doors to the river terrace. There are two double bedrooms on the ground floor with a family bathroom.

The first floor is arranged as two large double bedroom suites, both with access to a river facing balcony with breathtaking views and en-suites. To the front of the house there is off street parking for several cars on the paved driveway with pretty gardens. To the rear an extensive west facing decked terrace overlooks beautiful landscaped gardens with tiered borders and steps to a 90ft Mooring.

### Features

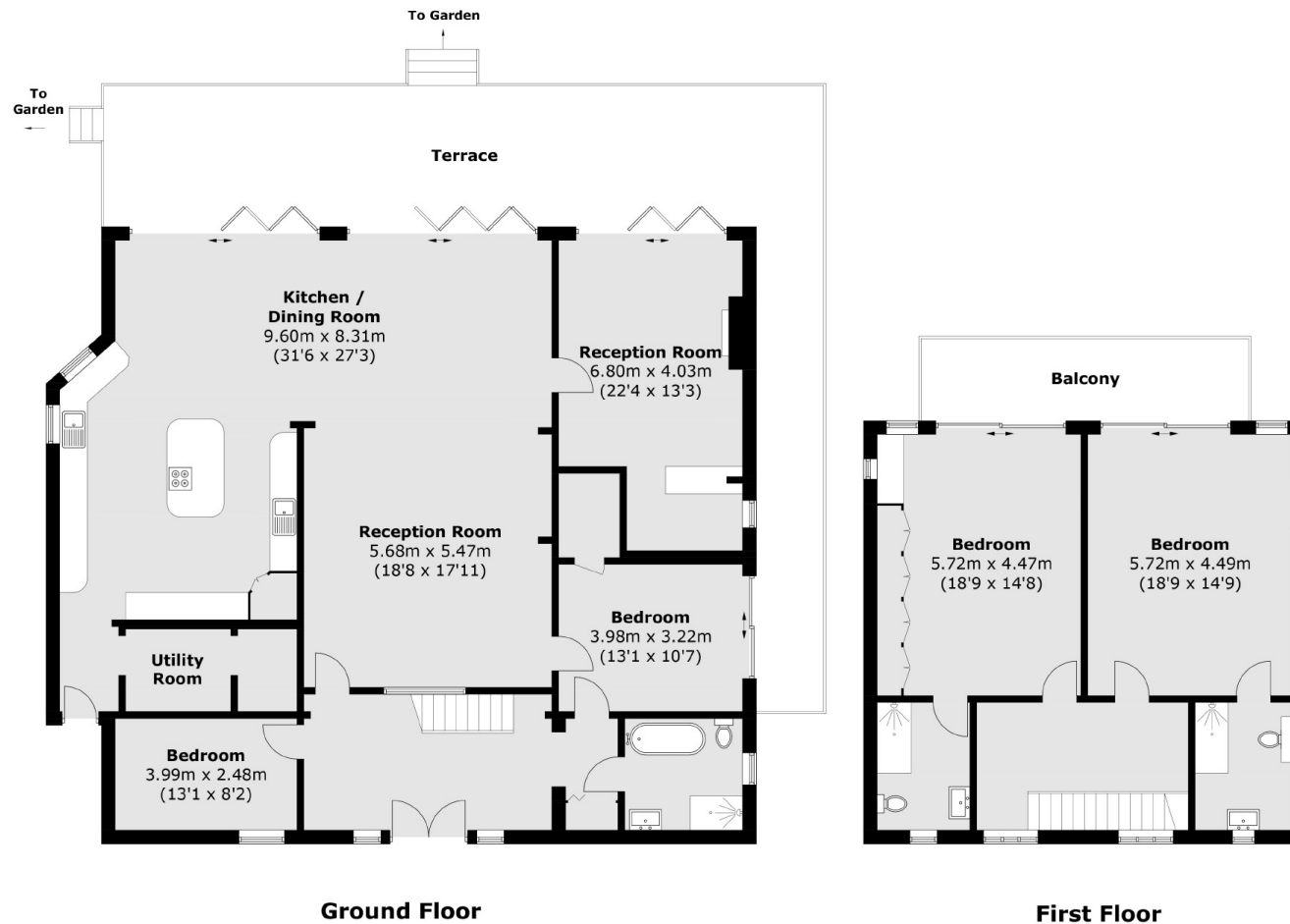
Riverside Home  
Four Bedrooms  
Three Bathrooms  
Modern Build  
90ft Mooring  
Extensive Gardens







# Laleham Reach, Chertsey, KT16



Total area (approx.): 269.2 sq. m ( 2897.6 sq. ft)  
Balcony area : 12.9 sq. m ( 138.8 sq. ft)  
Terrace area : 64.5 sq. m ( 694.3 sq. ft)

## Contact

To arrange a viewing call our office on the number below or visit our website.



Energy Rating: B. We aim to make our particulars both accurate and reliable. However they are not guaranteed; nor do they form part of an offer or contract. If you require clarification on any points then please contact us, especially if you're traveling some distance to view. Please note that appliances and heating systems have not been tested and therefore no warranties can be given as to their good working order.



