



## 8 Oakley Road, Hannington - RG26 5TU

£600,000 offers over

STUNNING VIEWS • POTENTIAL TO EXTEND SUBJECT TO USUAL PLANNING CONSENT • 3 BEDROOMS • OFF ROAD PARKING • DOWNSTAIRS WC • VILLAGE LOCATION • CHAIN FREE SALE • SOUTHERLY FACING GARDEN • BI FOLD DOORS • DRONE VIDEO

01256 321777

[www.thepropertyexplorer.co.uk](http://www.thepropertyexplorer.co.uk)

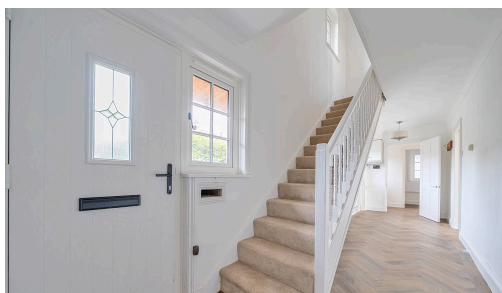
the property  
**explorer**

Perfectly tucked away in the heart of the highly sought after village of Hannington, this charming three bedroom home offers the perfect balance of countryside living and modern convenience. Surrounded by beautiful rolling farmland and away from the hustle and bustle of town life, the property enjoys a peaceful setting within a thriving village community. Hannington is renowned for its strong sense of community and village charm, offering a church, village hall, playing fields, clubs and a welcoming pub at the heart of village life. Nearby you will find local butchers, bakers and convenience stores along with excellent primary, secondary and private schooling options. The larger centres of Basingstoke and Newbury are both within easy reach, providing extensive shopping, leisure and recreational facilities together with fast rail services to London and beyond. Excellent road links via the M3, M4, A34 and A303 make this an ideal location for commuters.

Council Tax band: E



- › STUNNING VIEWS
- › POTENTIAL TO EXTEND  
SUBJECT TO USUAL PLANNING  
CONSENT
- › 3 BEDROOMS
- › OFF ROAD PARKING
- › DOWNSTAIRS WC
- › VILLAGE LOCATION
- › CHAIN FREE SALE
- › SOUTHERLY FACING GARDEN
- › BI FOLD DOORS
- › DRONE VIDEO





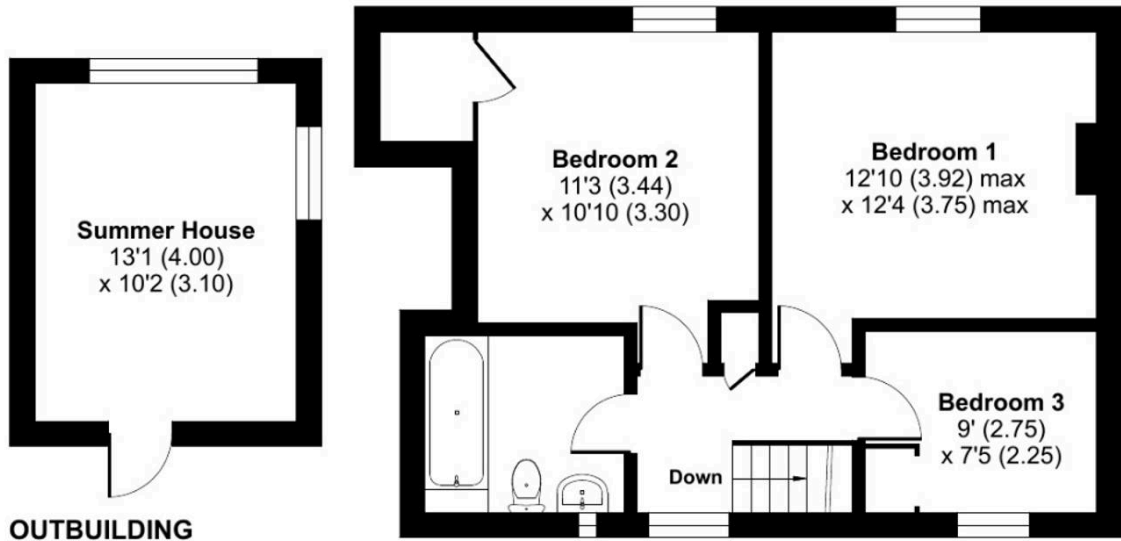
# Oakley Road, Tadley, RG26

Approximate Area = 1227 sq ft / 114 sq m

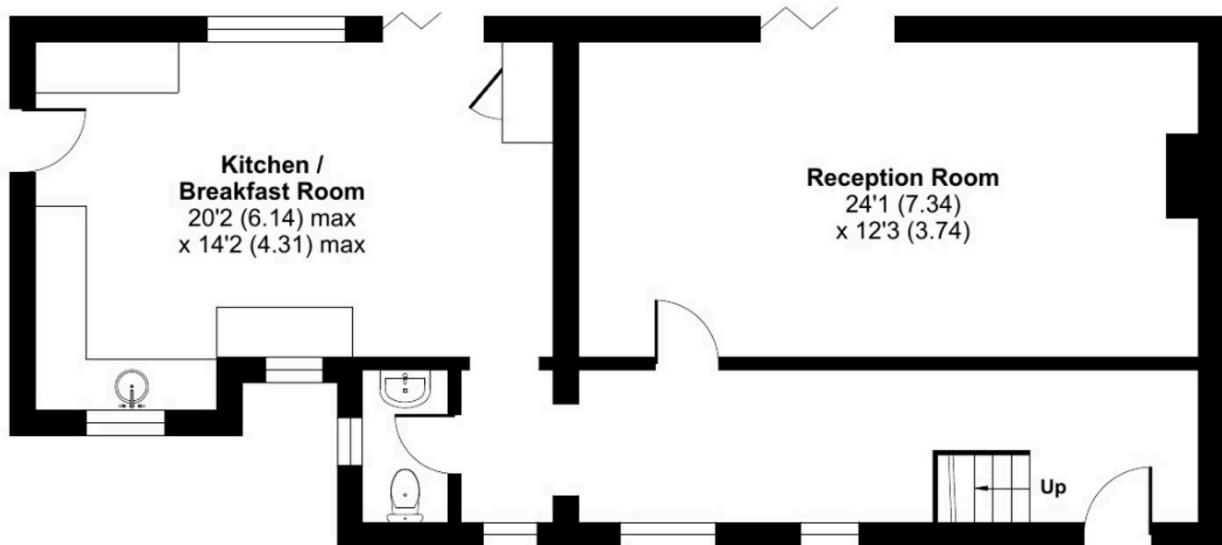
Outbuilding = 133 sq ft / 12.3 sq m

Total = 1360 sq ft / 126.3 sq m

For identification only - Not to scale



FIRST FLOOR



GROUND FLOOR



Floor plan produced in accordance with RICS Property Measurement 2nd Edition, Incorporating International Property Measurement Standards (IPMS2 Residential). © nichecom 2026. Produced for Property Explorer. REF1450989