



Lakeside Drive, NW10

£2,500 Per calendar month

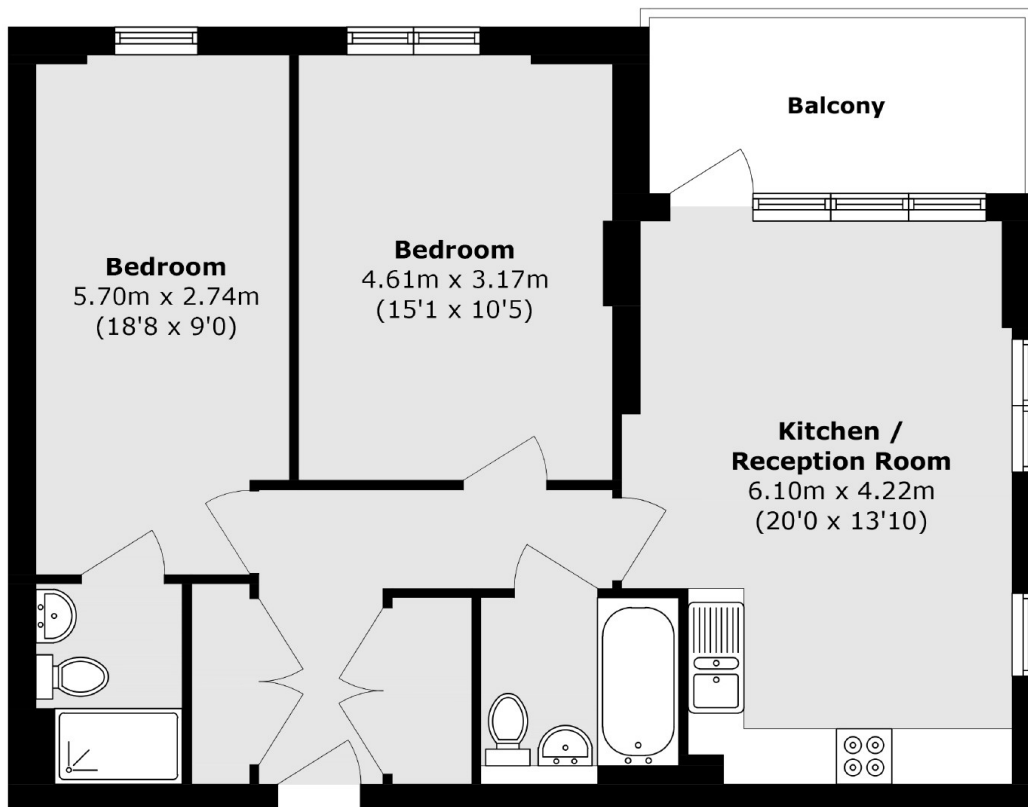
This immaculately presented two bedroom apartment is based on the 16th floor of a well maintained new build development and benefits from a bright and spacious open plan kitchen reception and a private balcony overlooking the London Skyline.

Lakeside Drive is a private residential pocket of new build developments surrounding a lake and landscaped communal gardens and is also a short walk to Park Royal Station (Piccadilly Line).

Features

- New Build Development
- 16th Floor
- London Skyline
- Ample Storage
- Modern Finish
- Great Location

Lakeside Drive,
London, NW10



Total area (approx.): 75.7 sq. m (814.8 sq. ft)
Balcony area (approx.): 7.7 sq. m (82.8 sq. ft)