



## Northfield Avenue, W13

### £550,000

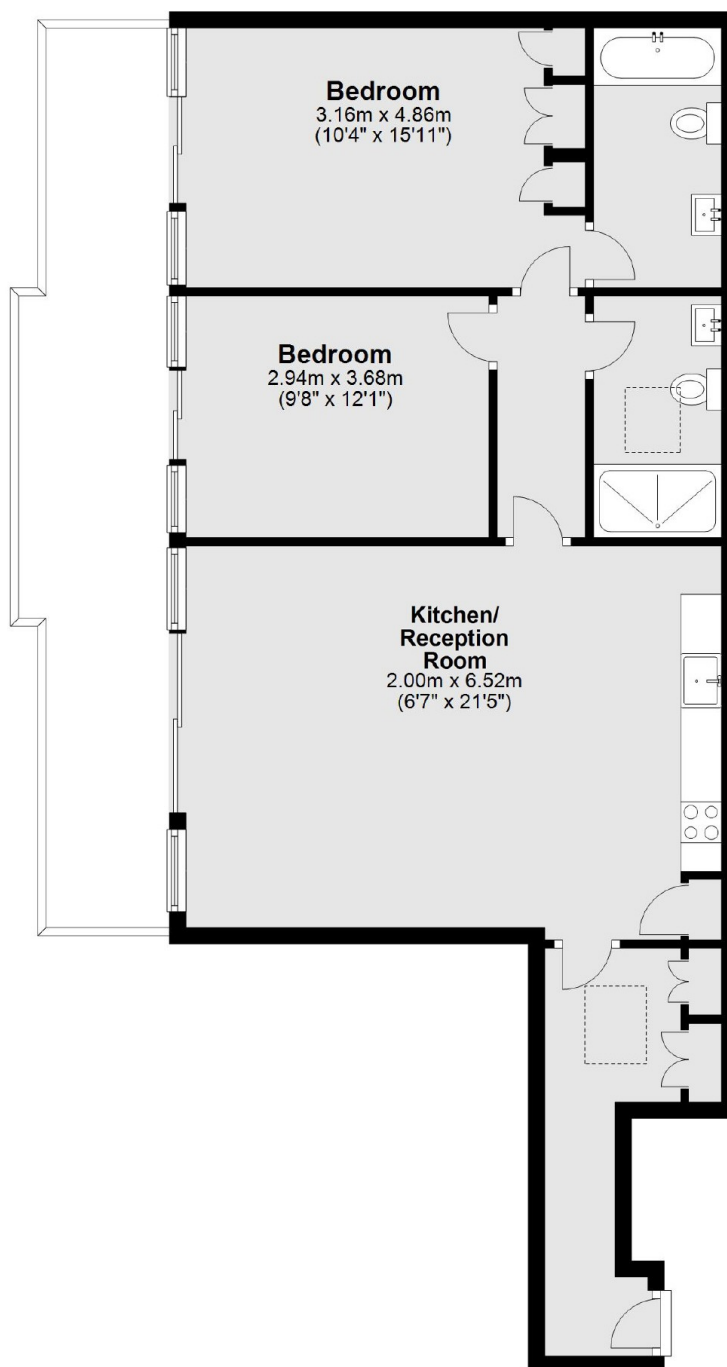
This fantastic two double bedroom, two bathroom penthouse has been recently built on top of the existing building to a very high standard. Features include a stunning open plan living space, full length private balcony and two double bedrooms, one with en suite and private parking.

West Ealing offers a fantastic range of shops, restaurants and bars, while Walpole and Lammas Park are easily accessible. Local transport links are available nearby from West Ealing Station (Elizabeth Line) and Northfields Station (Piccadilly Line).

### Features

- Penthouse
- Natural Wood Flooring
- Private Parking
- Private Terrace
- Two Double Bedrooms
- Two Bathrooms

# Northfield Avenue, London, W13



Total area: approx. 78.9 sq. metres (849.8 sq. feet)

## Dexters

Northfields  
140 Northfield Avenue  
London  
W13 9SB  
Sales  
020 8545 8588

Energy Rating: B. We aim to make our particulars both accurate and reliable. However they are not guaranteed; nor do they form part of an offer or contract. If you require clarification on any points then please contact us, especially if you're traveling some distance to view. Please note that appliances and heating systems have not been tested and therefore no warranties can be given as to their good working order.

 **RICS** | Regulated  
Estate Agent  
and Letting Agent

[dexters.co.uk](https://www.dexters.co.uk)