

1 Viaduct Gardens London

A stunning two bedroom, two bathroom apartment arranged over a high floor in Legacy Building, Embassy Gardens.

This apartment features comfort cooling, fully integrated appliances, such as a dishwasher, combination washer/ dryer, wine cooler and a private balcony.

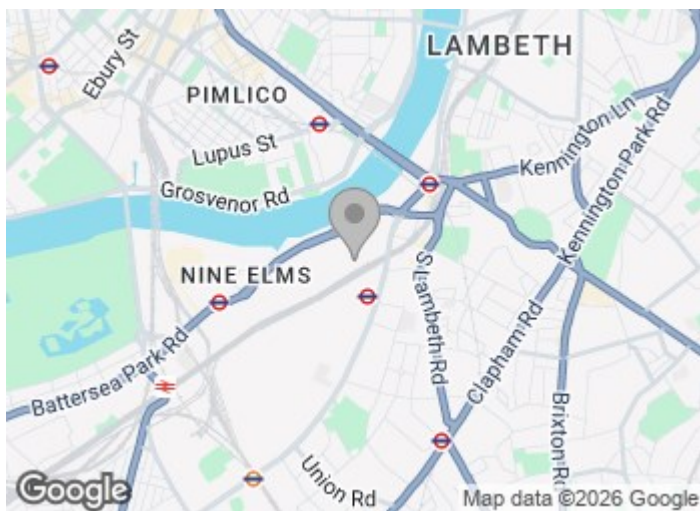
Residents can benefit from exciting communal amenities including the wonderful Sky Pool, Sky Deck and Orangery restaurant as well as the gym, spa and private cinema. The development is situated close to zone one transport links including Vauxhall & Nine Elms station.

£1,000 Per Week

1 Viaduct Gardens London



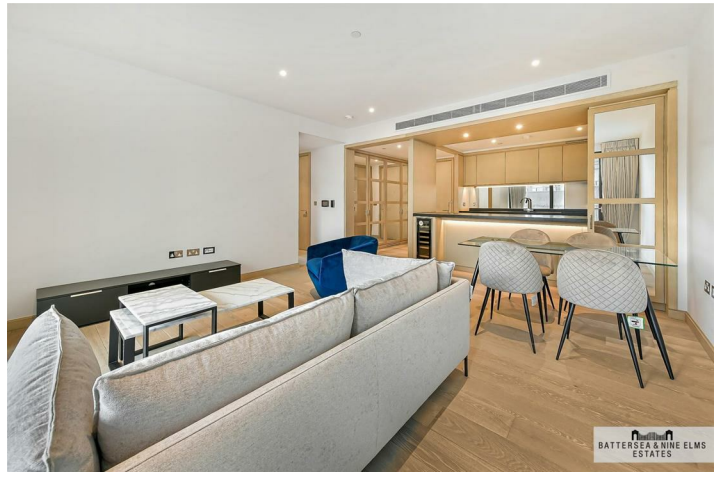
- Two double bedrooms
- Excellent transport links
- Private cinema
- Two bathrooms (one en suite)
- Sky pool
- Indoor pool and spa
- 24 Hour concierge
- Gymnasium



[Directions](#)



BATTERSEA & NINE ELMS
ESTATES



BATTERSEA & NINE ELMS
ESTATES



BATTERSEA & NINE ELMS
ESTATES



BATTERSEA & NINE ELMS
ESTATES



BATTERSEA & NINE ELMS
ESTATES



BATTERSEA & NINE ELMS
ESTATES



BATTERSEA & NINE ELMS
ESTATES



BATTERSEA & NINE ELMS
ESTATES

Legacy Building,
Embassy Gardens, SW11
Approximate Gross Internal Area
81.1 sq m / 873 sq ft

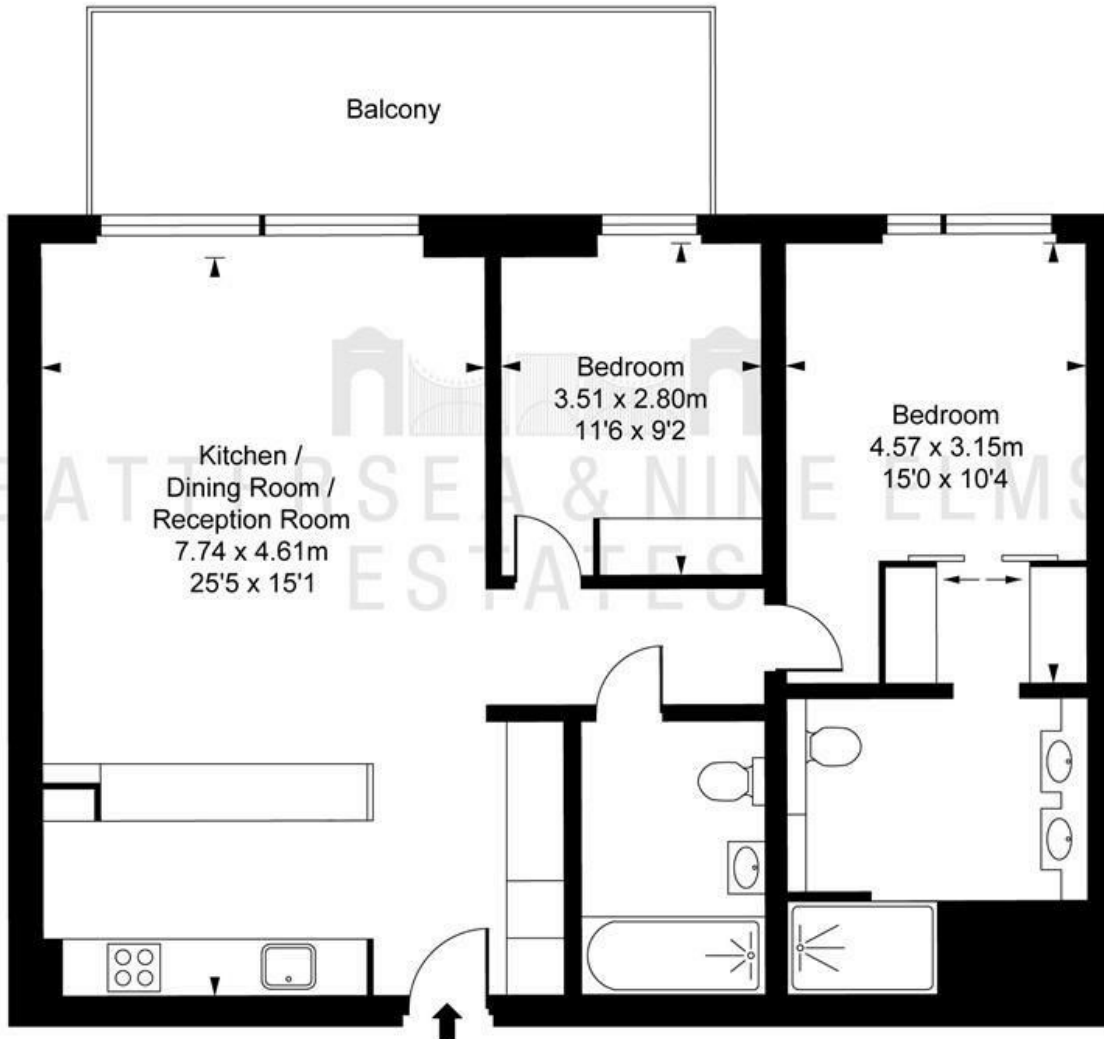


ILLUSTRATION FOR IDENTIFICATION PURPOSES ONLY
ALL MEASUREMENTS AND AREA FIGURES SUPPLIED BY OTHERS. ACCURACY IS NOT GUARANTEED.
THIS PLAN MUST NOT BE REPRODUCED BY ANY OTHER PERSON WITHOUT PERMISSION

These particulars, whilst believed to be accurate are set out as a general outline only for guidance and do not constitute any part of an offer or contract. Intending purchasers should not rely on them as statements of representation of fact, but must satisfy themselves by inspection or otherwise as to their accuracy. No person in this firm's employment has the authority to make or give any representation or warranty in respect of the property.

