



31 Firbeck Avenue

Skegness

A spacious 4 Bedroom semi detached family house in a great location convenient for the town centre and beach. With Entrance Porch, Reception Hall, Lounge with log burner, Dining Room, Breakfast Kitchen, rear Porch with a ground floor W.C. To the first floor are 4 Bedrooms and a modern Shower Room. A block paved drive provides ample parking, detached Garage and a generous rear garden. The property has a gas central heating system, pvc double glazing and 16 owned Solar Panels.

Council Tax band: B

Tenure: Freehold

EPC Energy Efficiency Rating: B

EPC Environmental Impact Rating: B





ACCOMMODATION

Entrance is on the front elevation via a pair of pvc doors to the:-

ENTRANCE PORCH

With an inner glazed door and decorative leaded glazed side screens to the:-

HALLWAY

13' 1" x 6' 10" (4.00m x 2.09m)

With stripped wooden floorboards, stairs to the front floor with built in cupboard under, radiator, pvc window to the side elevation.

LOUNGE

14' 9" x 13' 1" (4.50m x 4.00m)

With walk in pvc bay window to the front elevation with curved radiator below, fireplace with multi-fuel stove and wooden mantle, T.V aerial point.

DINING ROOM

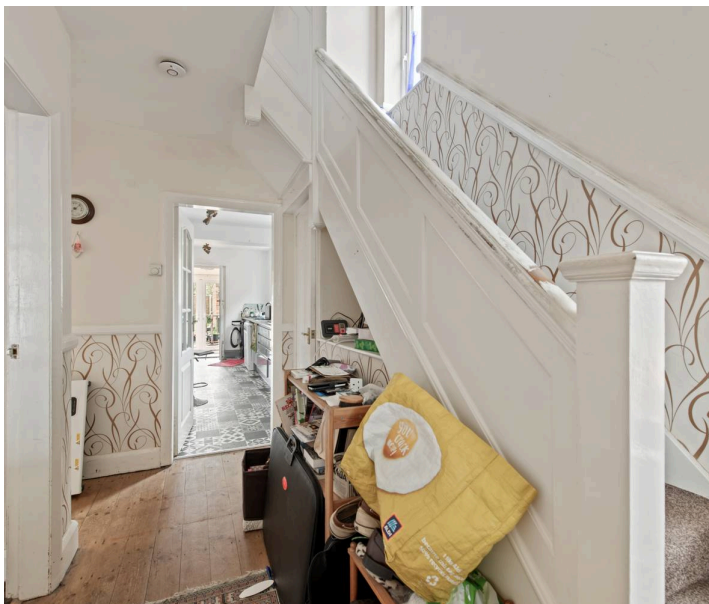
12' 1" x 10' 6" (3.68m x 3.20m)

With sliding pvc patio doors to opening onto the rear garden, laminate wood effect flooring, radiator, T.V aerial point.

KITCHEN

18' 6" x 9' 5" (5.63m x 2.86m)

Fitted with a modern range of high gloss base and wall units, worksurfaces with matching upstands, sink unit with mixer tap over, oven unit housing a Bosch electric double oven, inset ceramic induction hob with extractor hood above, spaces for a dishwasher, washing machine and fridge freezer, breakfast bar with radiator under, T.V aerial point, 3 pvc windows to the side elevations and a single glazed door to the:-



REAR PORCH

With wall mounted gas central heating boiler, tiled floor, built in cupboard, pvc double doors opening onto the rear garden and door to:-

W.C

With toilet, window to the side elevation.

FIRST FLOOR LANDING

With a pvc window to the side elevation, access to roof space.

BEDROOM 1

15' 3" x 11' 6" (4.64m x 3.50m)

With walk in pvc bay window to the front elevation with curved radiator below, T.V aerial point.

BEDROOM 2

12' 1" x 10' 5" (3.68m x 3.17m)

With pvc window to the rear elevation, radiator, T.V aerial point.

BEDROOM 3

9' 6" x 8' 1" (2.89m x 2.46m)

With pvc window to the rear elevation, radiator, T.V aerial point.

BEDROOM 4

8' 5" x 8' 0" (2.57m x 2.45m)

With pvc window to the front elevation, radiator, T.V aerial point, recessed overstairs cupboard.

SHOWER ROOM

9' 11" x 6' 5" (3.03m x 1.95m)

Being fitted with a modern range of built in furniture comprising base and drawer units, recessed wash hand basin and W.C with concealed cistern, a large walk in shower enclosure with glass screen and electric shower, mirrored bathroom cabinet, chrome heated towel radiator, downlights to ceiling, extractor fan, 2 pvc windows to the side elevation, partly wetroom boarding to the walls.





OUTSIDE

To the front is a low maintenance block paved frontage providing ample parking and bordered by a decorative low fence to the front and wall to the side. A block paved drive to the side leads to a pair of wooden vehicle gates which open onto a inner drive and access to the:-

GARAGE

With double vehicle doors, window to the side elevation, power connected.

REAR GARDEN

The generous sized rear garden comprises a decked seating area with balustrade and steps down to a paved patio and a lawn with stepping stones leading to a greenhouse and garden Shed.

TENURE

Freehold.

SERVICES

The property has mains gas, electricity, water and drainage connected. Heating is via a gas central heating boiler served by radiators. The property also benefits from 16 solar panels on the roof which are owned.

VIEWING

By prior appointment with Newton Fallowell office in Skegness.

COUNCIL TAX

Charging Authority – East Lindsey District Council
Band B - 2026/27 - £1,804.19

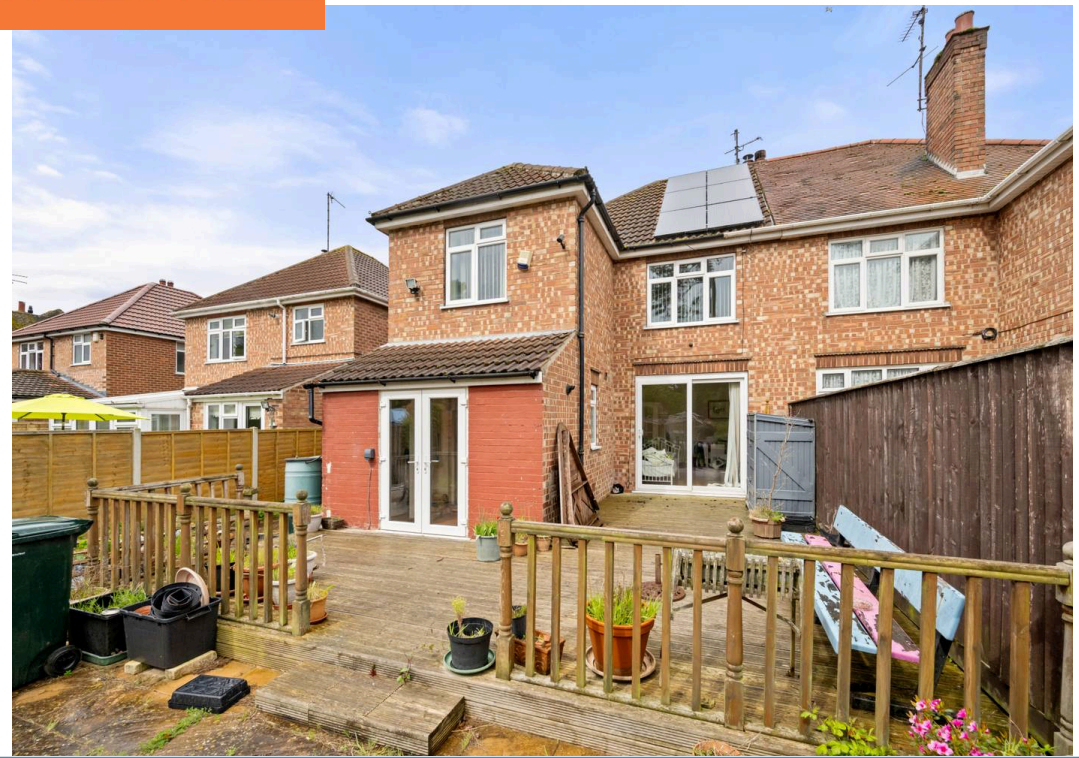
PHOTOGRAPHS

Taken from our archive.



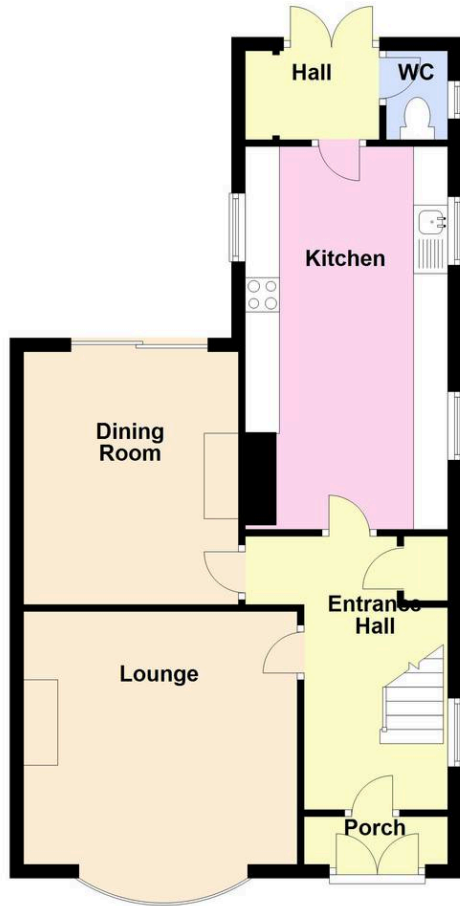


 **NEWTON FALLOWELL**



Ground Floor

Approx. 59.9 sq. metres (644.3 sq. feet)



First Floor

Approx. 54.4 sq. metres (585.2 sq. feet)



Total area: approx. 114.2 sq. metres (1229.5 sq. feet)

ANTI MONEY LAUNDERING REGULATIONS

We are required by law to conduct anti-money laundering checks on all those selling or buying a property. Whilst we retain responsibility for ensuring checks and any ongoing monitoring are carried out correctly, the initial checks are carried out on our behalf by Lifetime Legal who will contact you once you have agreed to instruct us in your sale or had an offer accepted on a property you wish to buy. There is a charge for these checks is £72 (incl. VAT), which covers the cost of obtaining relevant data and any manual checks and monitoring which might be required. This fee will need to be paid by you in advance of us publishing your property (in the case of a vendor) or issuing a memorandum of sale (in the case of a buyer), directly to Lifetime Legal, and is non-refundable. We will receive some of the fee taken by Lifetime Legal to compensate for its role in the provision of these checks.

AGENTS NOTES

These particulars are issued in good faith but do not constitute representations of fact or form part of any offer or contract. The matters referred to in these particulars should be independently verified by prospective buyers or tenants. Neither Newton Fallowell nor any of its employees or agents has any authority to make or give any representation or warranty whatever in relation to this property.



Newton Fallowell Estate Agents

Newton Fallowell, 32 Roman Bank, Skegness - PE25 2SL

01754 766061 • skegness@newtonfallowell.co.uk • www.newtonfallowell.co.uk/skegness

