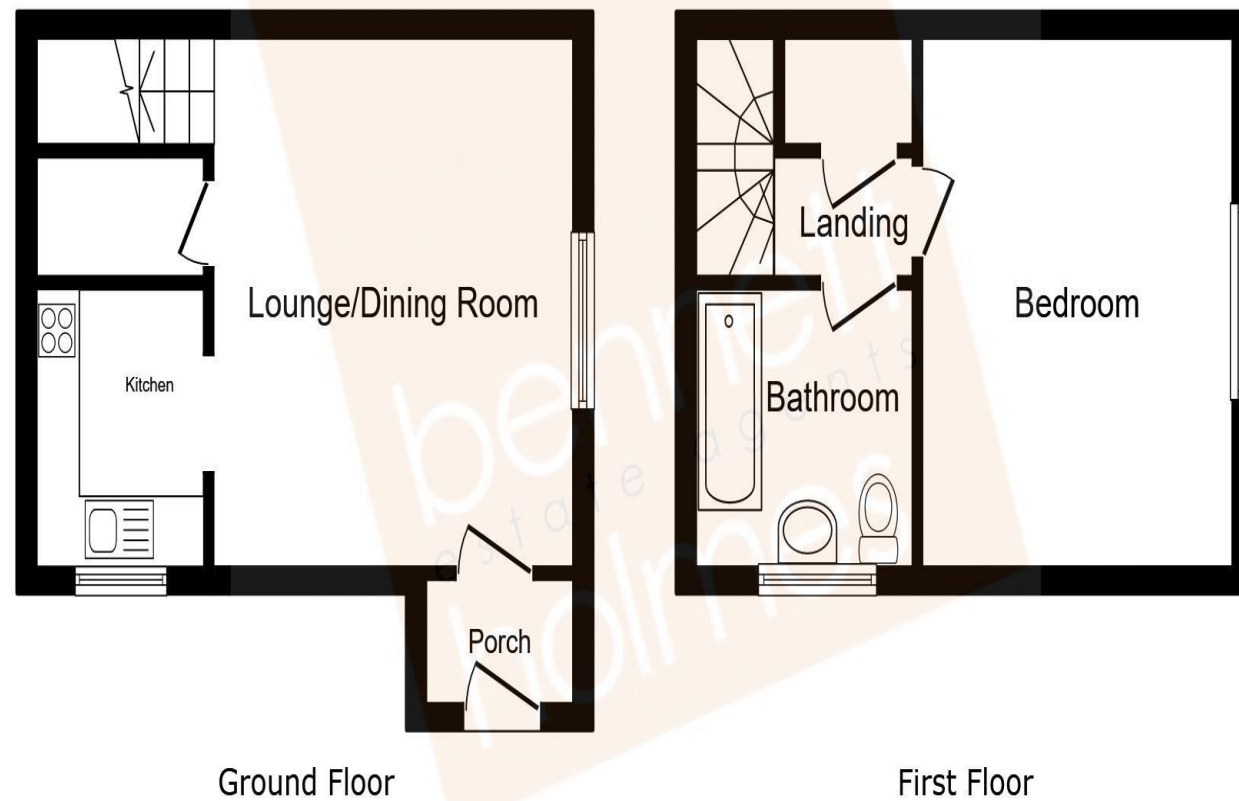


Furze Close Watford WD19 6HG

Price Guide: Monthly Rental Of £1,275



This floor plan is for illustrative purposes only. It is not drawn to scale. Any measurements, floor areas (including any total floor area), openings and orientations are approximate. No details are guaranteed, they cannot be relied upon for any purpose and do not form any part of any agreement. No liability is taken for any error, omission or misstatement. A party must rely upon its own inspection(s). Powered by www.Propertybox.io

NORTHOLT OFFICE

83 Oldfields Circus Northolt, Middlesex UB5 4RU

sales: 020 8423 2222 lettings: 020 8423 0222

northolt@bennetholmes.com

Unfurnished
Available Now
Three Rivers District Council
Council Tax Band C
Council Tax £2,050 per annum
EPC =C

IMPORTANT Bennett Holmes would inform prospective purchasers that these sales particulars have been prepared as a general guide only. A detailed survey has not been carried out, nor the services, appliances and fittings tested. Room sizes should not be relied upon for furnishing purposes and are approximate. If floor plans are included, they are for guidance only and illustration purposes only and may not be to scale. If there are any important matters likely to affect your decision to buy, please contact us before viewing the property.



Bennett Holmes are delighted to offer for letting this one bedroom end of terrace house. The property is situated in a popular modern development approx 0.6 miles from Carpenders Park Station. Local shopping facilities and sought after primary schools are also within easy reach. The property is offered unfurnished and available now.



- ONE BEDROOM HOUSE
- END OF TERRACE
- GAS CENTRAL HEATING
- DOUBLE GLAZED WINDOWS
- UNFURNISHED
- AVAILABLE NOW
-
-

Furze Close Watford WD19 6HG

Price Guide: Monthly Rental Of £1,275



Accommodation

Accommodation comprises: Entrance hallway, spacious reception room with large storage cupboard, fitted kitchen with electric oven, electric hob and stainless steel extractor hood over. Wall mounted combination boiler controlled by Hive. To the first floor: landing with large storage cupboard, spacious double bedroom and family bathroom. The property benefits from wood laminate floors to the entrance hall and lounge, lino flooring to the kitchen and bathroom and carpet to the bedroom. Further benefits include double glazing and gas central heating, allocated parking and gardens to the front and rear.

