



Guide Price
£280,000

Freehold

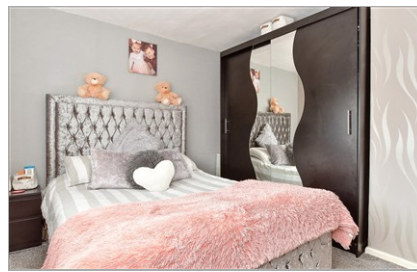
3x  1x  1x 

**Thatch Barn Road,
Headcorn, Ashford,
Kent, TN27**

OVER 60?

Secure this property
for up to **59% less!**

Wards
Helping you move forwards



Main features

- Offered in good condition with neutral décor throughout
- Large kitchen/diner and separate lounge
- Modern fitted kitchen and bathroom
- Generously sized rear garden
- Within walking distance to High Street, Primary School and Headcorn Train Station

Accommodation

GROUND FLOOR

Entrance Hall

Lounge: 14'11 x 12'4 (4.55m x 3.76m)

Kitchen/Diner: 17'9 x 9'10 (5.41m x 3.00m)

Conservatory: 10'3 x 8'4 (3.13m x 2.54m)

FIRST FLOOR

Landing

Bedroom 3: 8'8 x 7'4 (2.64m x 2.24m)

Bedroom 1: 12'6 x 12'5 (3.81m x 3.79m)

Bedroom 2: 12'3 x 8'6 (3.74m x 2.59m)

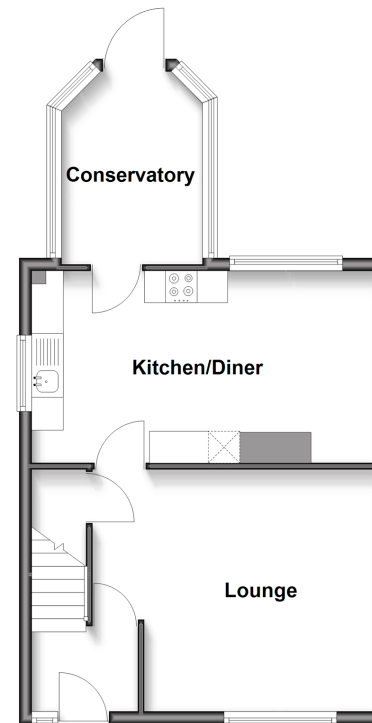
Shower Room

OUTSIDE

Rear Garden

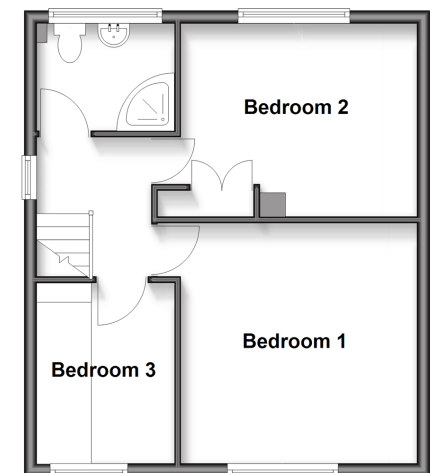
Ground Floor

Approx. 44.6 sq. metres (480.0 sq. feet)



First Floor

Approx. 41.7 sq. metres (448.9 sq. feet)



Call Headcorn - 01622 890435 ■ wardsof Kent.co.uk

- Legal advice should be taken to verify fixtures/fittings, planning, alterations and/or lease details
- Through a Homewise Home For Life Plan people aged 60+ can secure this property for up to 59% less, by purchasing a Lifetime Lease

- Appliances & services are untested, dimensions are approximate and floor plans are not to scale