



Woodstock Road, London, W4
Guide Price £950,000

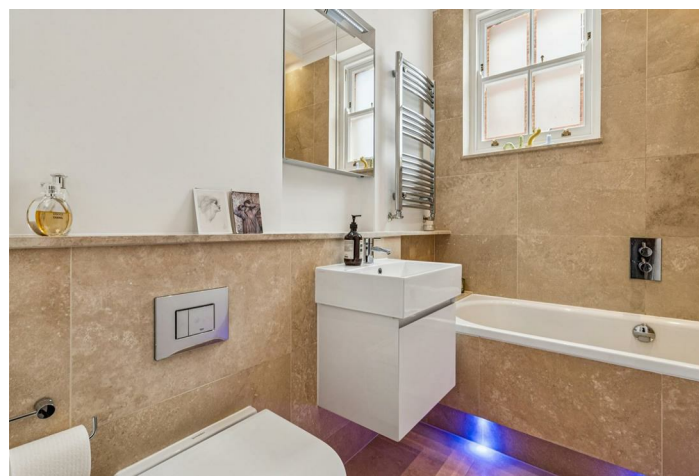
WHITMAN & CO.
SALES · LETTINGS · COMMERCIAL



A rare opportunity to acquire this lateral first-floor apartment forming part of a Grade II listed semi-detached house designed by EJ May, and positioned in one of Bedford Park's most sought-after roads.

The property comprises two double bedrooms, luxury bathroom, fully integrated bespoke kitchen, 17' reception room leading onto 21' roof terrace. The property is in excellent order throughout, with a long lease and a share in the freehold.

Within close proximity to Turnham Green Tube Station and the extensive range of shops, bars and restaurants on Chiswick High Road. Offered for sale with no onward chain.



Woodstock Road, W4

Approximate Gross Internal Area
83.75 sq m / 901 sq ft

Key :
CH - Ceiling Height



First Floor

Not to scale, for guidance only and must not be relied upon as a statement of fact.
All measurements and areas are approximate only

- Two double bedrooms
- Fully integrated bespoke kitchen
- 21' Roof terrace

- Luxury bathroom
- 17' Reception room
- Long lease & share in the freehold

Tenure - Leasehold & Share of Freehold
Length of lease - 900+ years
Ground Rent - Peppercorn
Service Charge - £1200 pa
Local Authority - Hounslow
Council Tax - Band E

