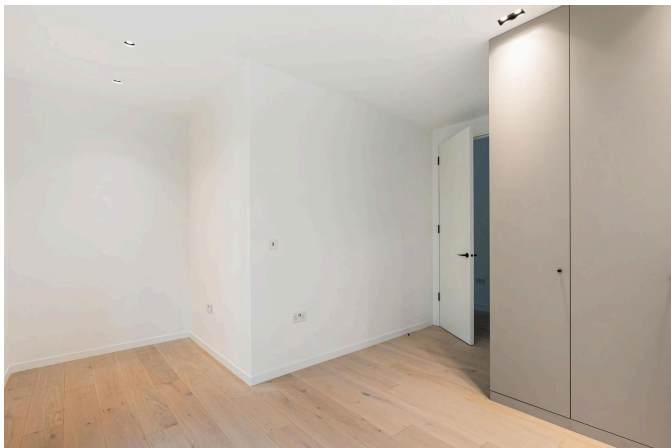


## Creswick Road, Acton, W3

£3,500PCM (Deposit: £4,038)

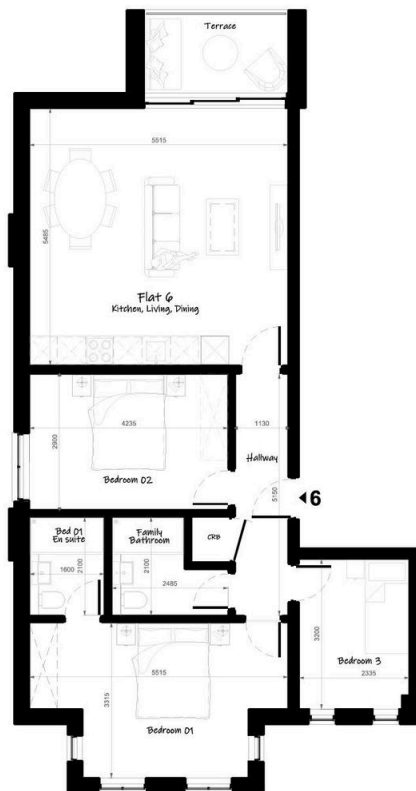
🛏 3 🚿 2 🚗 1



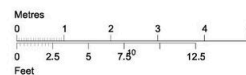
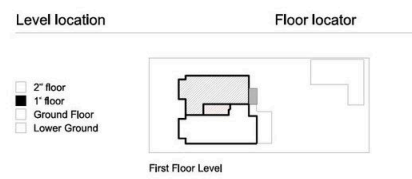
Tax Band: D Furnished:  
Unfurnished

- Quote MG1175 on all enquiries.
- 3 Double Bedrooms
- 1st floor
- Private South Facing Balcony & Communal Gardens
- Underfloor Heating
- Guide Price: £3,500 to £3,750 pcm
- 2 Bathrooms
- 904 sqft
- Immaculate Modern Finish throughout
- Close to Elizabeth Line (Acton Mainline)

FLAT 6 - (3 Bed Apartment)



Dimensions	m <sup>2</sup>	ft <sup>2</sup>
Total Gross Internal area	84.0 Sq. m*	904.2 Sq. **
*Includes internal walls		
Terrace	5.4 Sq. m	58.5 Sq. *



A beautifully finished three-bedroom, two-bathroom first floor apartment offering 904 sq ft of bright and stylish living space with its own private balcony, set within an exclusive development on a quiet residential road in Acton. Three generous double bedrooms include a principal with en-suite, and a luxurious family bathroom completes the home. Residents also enjoy access to a landscaped, south-facing communal garden.