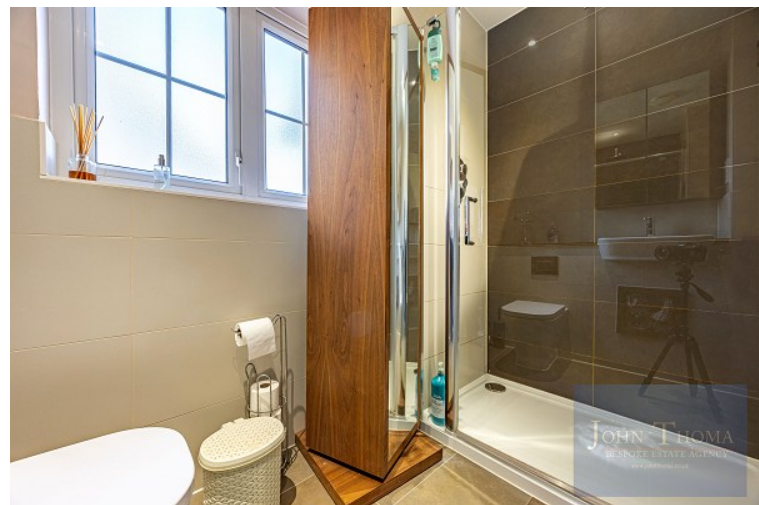




A beautifully presented five double bedroom detached family home in a peaceful and picturesque location. The property is finished to a high standard, arranged over three floors and is 2,146 square feet in size.

The property has excellent road links and is close to the amazing Hainault forest and golf course.

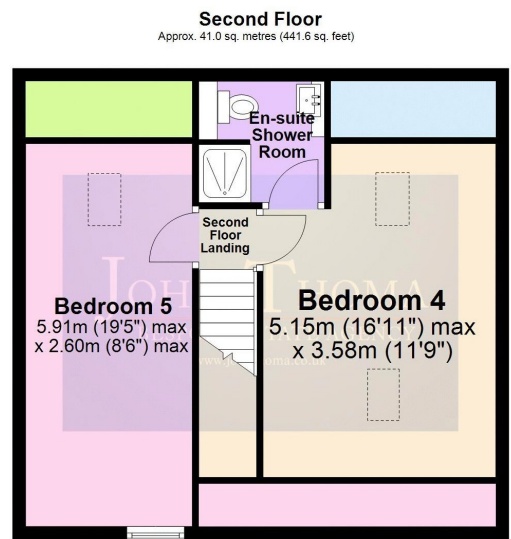
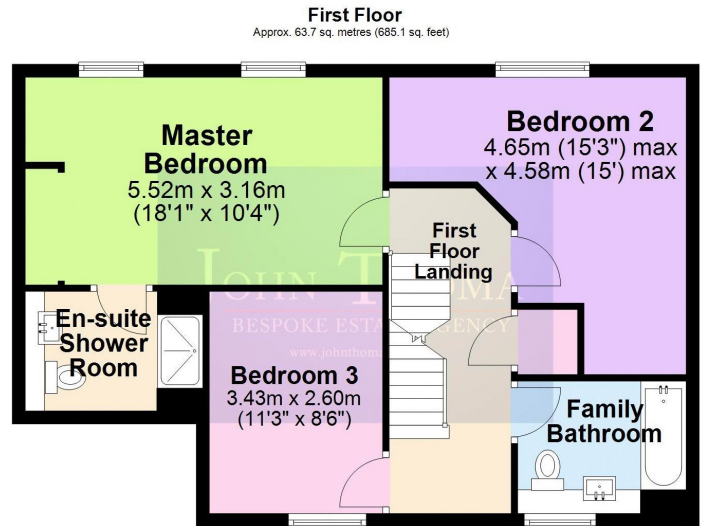
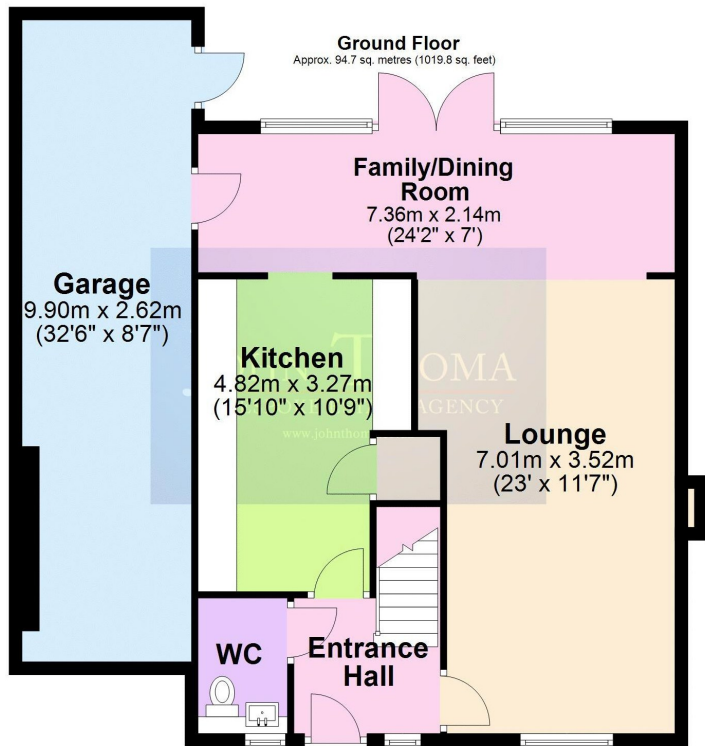
Aster Road, Chigwell



- ◆ ON THE GROUND FLOOR THERE IS A LARGE LOUNGE, A DINING-FAMILY ROOM AND A STUNNING BESPOKE FITTED KITCHEN
- ◆ THE SPACIOUS LOUNGE MEASURES 23' x 11' 7" AND LEADS ONTO A DINING-FAMILY ROOM MEASURING 24' 2" x 7' IN SIZE
- ◆ THE BEAUTIFULLY FINISHED FITTED KITCHEN MEASURES 15' 10" x 10' 9" WITH SIEMENS INTEGRATED APPLIANCES
- ◆ THE MASTER BEDROOM MEASURES 18' 1" x 14' 4" WITH BESPOKE FITTED WARDROBES AND A MODERN EN-SUITE SHOWER

- ◆ ALSO LOCATED ON THE FIRST FLOOR ARE TWO FURTHER DOUBLE BEDROOMS AND A LARGE MODERN FAMILY BATHROOM
- ◆ ON THE SECOND FLOOR THERE ARE TWO WELL PROPORTIONED BEDROOMS, ONE HAS A MODERN EN-SUITE SHOWER
- ◆ A SOUTH FACING PRIVATE REAR GARDEN WITH A PAVED PATIO WITH ACCESS TO A LARGE GARAGE-UTILITY ROOM
- ◆ THE DRIVEWAY HAS PARKING FOR UP TO TWO CARS, ACCESS TO THE GARAGE AND AN ELECTRIC CAR CHARGER





Total area: approx. 199.4 sq. metres (2146.5 sq. feet)

Score	Energy rating	Current	Potential
92+	A		93 A
81-91	B	86 B	
69-80	C		
55-68	D		
39-54	E		
21-38	F		
1-20	G		

[John Thoma Bespoke Estate Agency, Chigwell Branch](#)

The Coach House 201 High Road Chigwell Essex IG7 5BJ
[020 8340 8833](tel:02083408833) Local call rate