



Connells

Bourton Road
Banbury



Property Description

Situated within a highly sought-after modern development of Hanwell View located just off the Southam Road, this beautifully presented four-bedroom family home, constructed in 2019, offers spacious and versatile accommodation arranged over three floors.

The ground floor comprises a welcoming entrance hall with a convenient cloakroom/WC, a modern kitchen/dining room to the front, and a generous sitting room to the rear with direct access to the garden—ideal for both everyday living and entertaining.

On the first floor, there are three well-proportioned bedrooms, including a particularly spacious second bedroom, alongside a contemporary family bathroom.

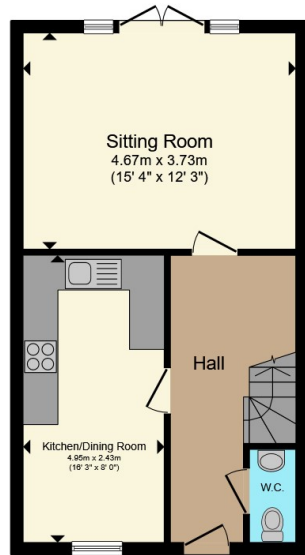
The second floor is dedicated to a superb master bedroom, featuring a large double bedroom and a stylish en-suite shower room, creating a private and comfortable retreat.

Externally, the property benefits from a garage and driveway parking, along with an enclosed rear garden.

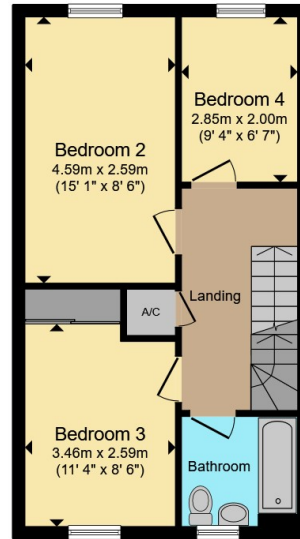




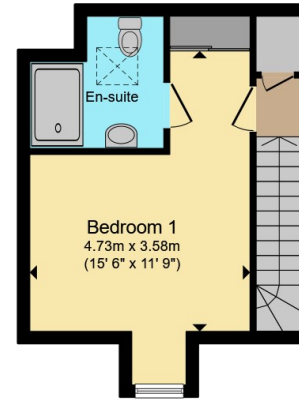




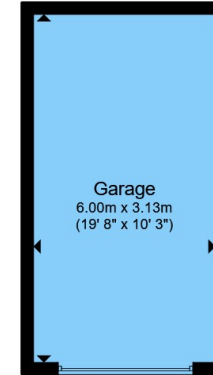
Ground Floor



First Floor



Second Floor



Garage

Total floor area 126.7 m² (1,364 sq.ft.) approx

This floor plan is for illustrative purposes only. It is not drawn to scale. Any measurements, floor areas (including any total floor area), openings and orientation are approximate. No details are guaranteed, they cannot be relied upon for any purpose and they do not form part of any agreement. No liability is taken for any error, omission or misstatement. A party must rely upon its own inspection(s). Powered by www.propertybox.io

Connells

To view this property please contact Connells on

T 01295 268 101
E banbury@connells.co.uk

33 Bridge Street
 BANBURY OX16 5PN

EPC Rating: B Council Tax
 Band: D

Tenure: Freehold

view this property online connells.co.uk/Property/BAN310033



1. MONEY LAUNDERING REGULATIONS Intending purchasers will be asked to produce identification documentation at a later stage and we would ask for your co-operation in order that there will be no delay in agreeing the sale. 2. These particulars do not constitute part or all of an offer or contract. 3. The measurements indicated are supplied for guidance only and as such must be considered incorrect. Potential buyers are advised to recheck measurements before committing to any expense. 4. We have not tested any apparatus, equipment, fixtures, fittings or services and it is in the buyers interest to check the working condition of any appliances.

Connells Residential is registered in England and Wales under company number 1489613, Registered Office is Cumbria House, 16-20 Hockliffe Street, Leighton Buzzard, Bedfordshire, LU7 1GN. VAT Registration Number is 500 2481 05.

See all our properties at www.connells.co.uk | www.rightmove.co.uk | www.zoopla.co.uk

Property Ref: BAN310033 - 0003