



## SEREN PARK GARDENS, SE3

£450,000

Modern fourth floor apartment

Two double bedrooms

Private balcony

Views of Canary Wharf

Allocated parking space

Energy rating: c



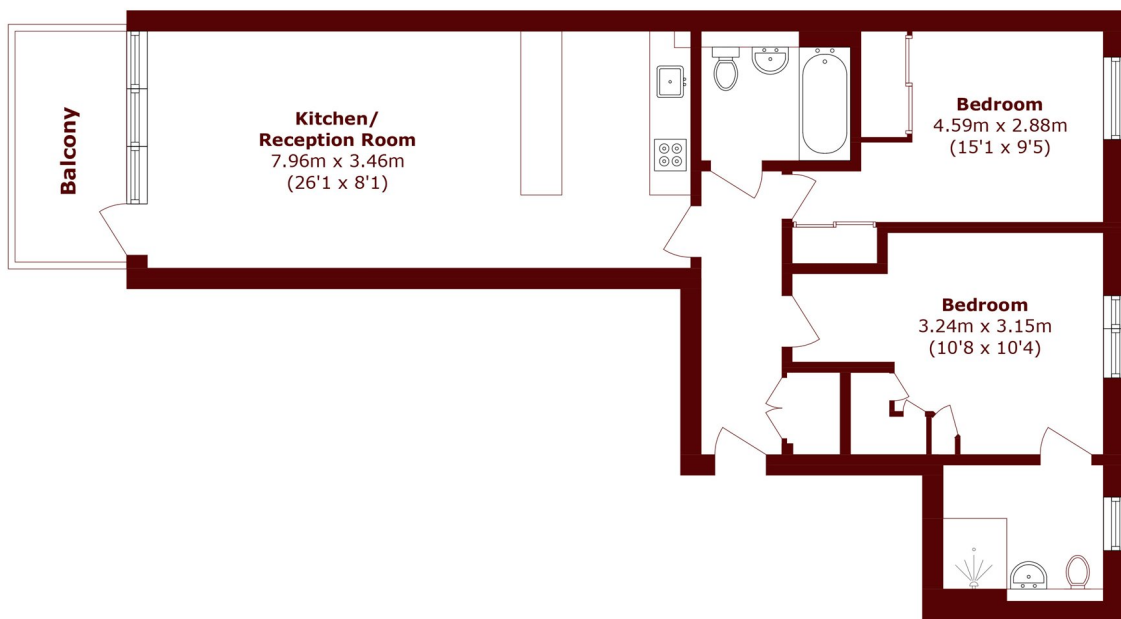
# ABOUT THE PROPERTY

Modern and spacious fourth floor apartment, offering beautiful views of Canary Wharf and an allocated underground parking space. Interior comprises a spacious lounge/diner with access to a private balcony, an open plan kitchen, a family bathroom and two double bedrooms, one of which has an en suite shower room. There is concierge on-site and the building has a lift.

Maze Hill rail station and Greenwich's royal park are a few minutes walk away. The immediate area has a great choice of supermarkets, restaurants and river front pubs. North Greenwich tube station and Greenwich town centre are a short bus ride away, where you will find the Cutty Sark DLR station and Greenwich pier.



# STEP INSIDE SEREN PARK GARDENS



Total area (approx.): 69.2 sq. m (744.8 sq. ft)

Balcony area (approx.): 5.49 sq. m (59.0 sq. ft)

**Greenwich**  
020 8312 8312

Energy Rating: C We aim to make our particulars both accurate and reliable. However, they are not guaranteed; nor do they form part of an offer or contract. If you require clarification on any points then please contact us, especially if you're traveling some distance to view. Please note that appliances and heating systems have not been tested and therefore no warranties can be given as to their good working order

**MARSH &  
PARSONS**