

Cowley Road | London, SW9

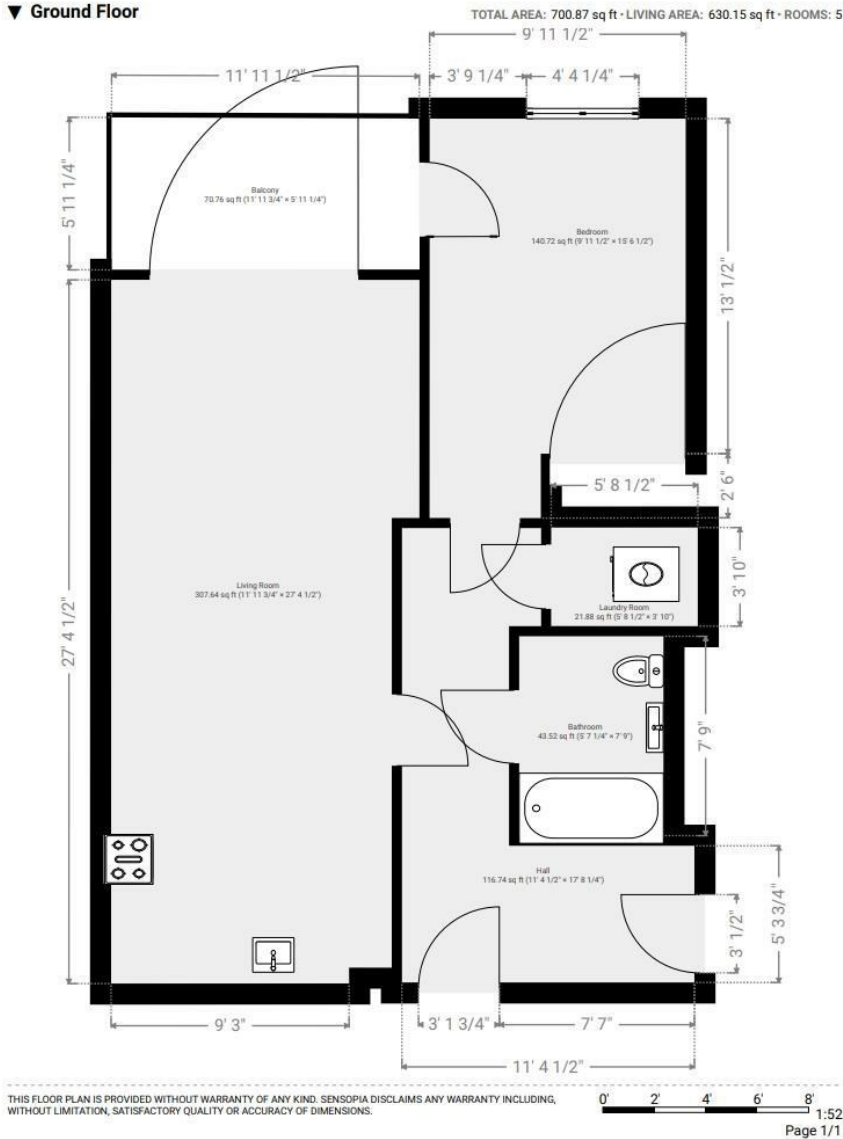


£400,000
Leasehold

A modern one bedroom ground floor apartment, this spacious home hosts an open plan living room and modern kitchen with fitted appliances. There is private outside space which is accessed through the living room and the bedroom. This flat also comes with a parking space.

The apartment is located in the Oval Quarter, which is quietly tucked away within a short walk of Oval, Stockwell and Brixton tube stations. Excellent access to public transport and local amenities. The property is also close to several parks including Kennington Park and Myatt's Fields Park.

▼ **Ground Floor**



Energy Efficiency Rating		Current	Potential
Very energy efficient - lower running costs			
(92 plus) A			
(81-91) B			
(69-80) C		74	74
(55-68) D			
(39-54) E			
(21-38) F			
(1-20) G			
Not energy efficient - higher running costs			
England & Wales		EU Directive 2002/91/EC	
Environmental Impact (CO ₂) Rating		Current	Potential
Very environmentally friendly - lower CO ₂ emissions			
(92 plus) A			
(81-91) B			
(69-80) C			
(55-68) D			
(39-54) E			
(21-38) F			
(1-20) G			
Not environmentally friendly - higher CO ₂ emissions			
England & Wales		EU Directive 2002/91/EC	

These particulars are designed to provide a guideline only and cannot be relied upon as a statement of fact. The description represents the opinion of the author and is not intended to provide false or misleading information. Any prospective purchaser should make further checks on its accuracy. All measurements are approximate and floorplans are for representation only.