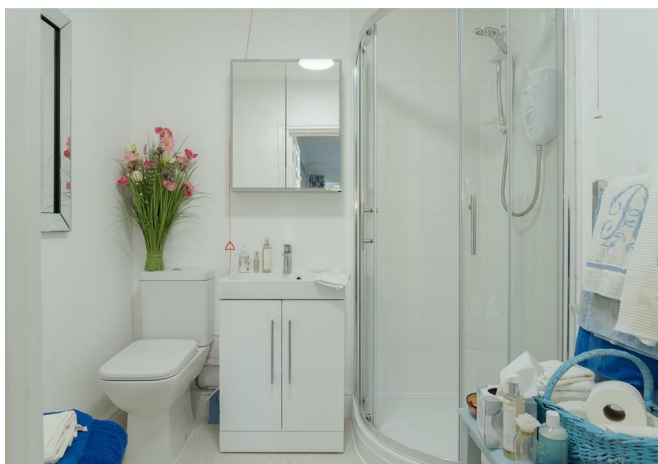




# Alma Road, Reigate

Offers in Excess of £300,000

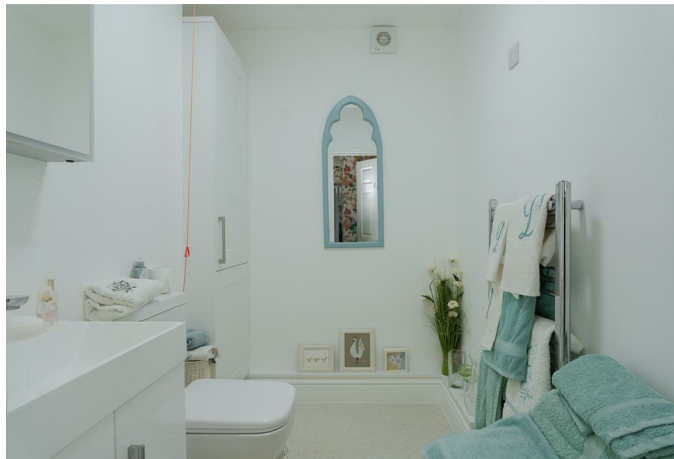




“

A lovely, bright retirement apartment for the over 60's with direct access straight into the lounge through the patio doors. Delightful patio area to enjoy with plenty of space for pots, plants and a table and chairs.

”



This ground floor retirement apartment is located just a short walk from Reigate station and local shops, cafes and restaurants on Holmesdale Road, as well as the Co-op. There are lovely communal grounds for the residents to enjoy, as well as a communal conservatory with tea and coffee making facilities, to meet up with friends and other residents. There are well kept garden areas with benches and chairs to sit and enjoy the surroundings.

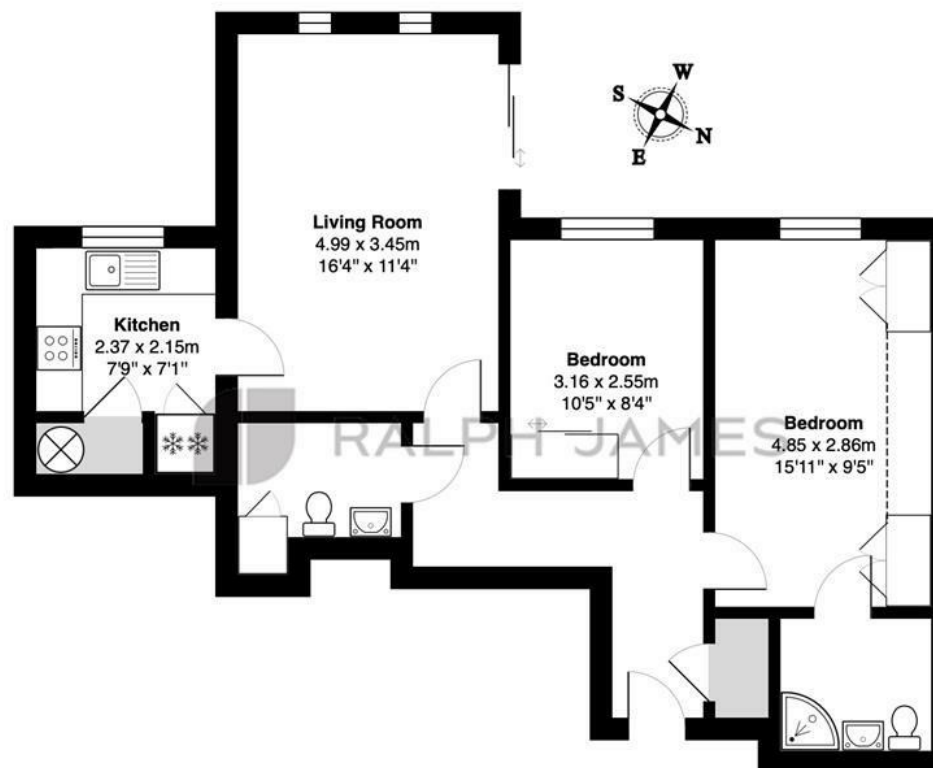
The property is located on the ground floor at the rear of the development and has a lovely patio area directly outside, which is a perfect space to keep a few pots and a small table and chairs. You can enter through the patio doors into the living room or through the communal entrance. The apartment has been updated by the current owner and has an inviting feel to it.

The kitchen is spacious and the window enables you to watch the world go by whilst standing at the sink. The en suite shower room has been updated and includes a large walk in shower with a fold up seat, making independent living far easier. There is also a separate cloakroom for any guests to use. Both bedrooms have built in wardrobes providing excellent storage.



## Need to know

- Two double bedroom, ground floor retirement apartment
- Popular development in Reigate, close to the train station and local shops
- Direct access from the patio, through the patio doors to the living room
- Communal conservatory with tea and coffee facilities
- Updated en suite shower room and separate cloakroom for guests to use
- Modern kitchen with plenty of storage and space for washing machine
- Communal parking
- Lovely, well maintained communal grounds with various places to sit



### Ground Floor

Ashfields, Alma Road, Reigate

Total Area: 65.8 m<sup>2</sup> ... 708 ft<sup>2</sup>

FOR ILLUSTRATIVE PURPOSES ONLY.

Whilst every attempt has been made to ensure the accuracy of the floor plan shown, all measurements, positioning, fixtures, features, fittings and any other data shown are an approximate interpretation for illustrative purposes only and are not to scale.

No responsibility is taken for any error, omission, miss-statement or use of data shown.

The above statement applies to both 'Still Moving London LTD' and the Company or individual displaying this floor plan.

Unauthorised reproduction prohibited.

Â© Still Moving London LTD (www.stillmoving.london)



## Interested?

reigate@ralphjames.co.uk  
01737 333677

ralphjames.co.uk