

# Helston, TR13 0RJ

Approximate Area = 7364 sq ft / 684.1 sq m

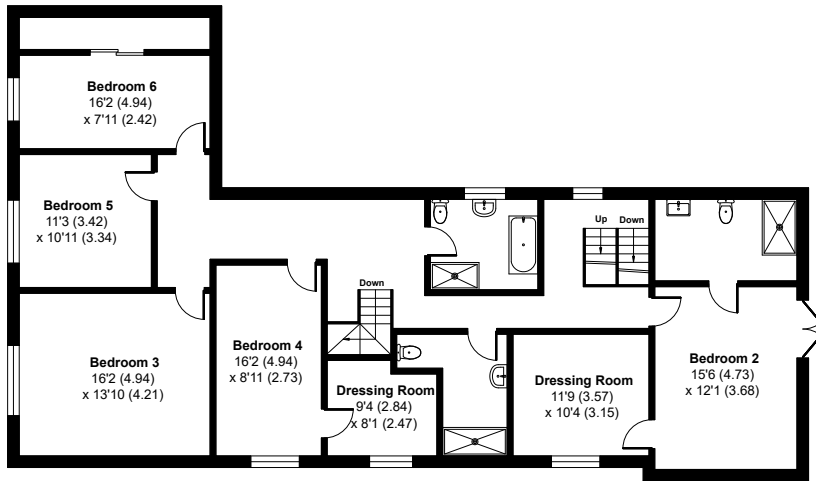
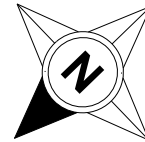
Mezzanine = 128 sq ft / 11.8 sq m

Garage = 428 sq ft / 39.7 sq m

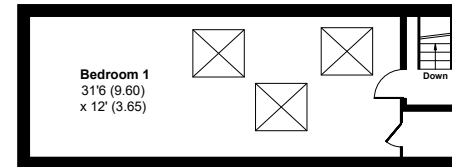
Outbuilding = 559 sq ft / 51.9 sq m

Total = 8479 sq ft / 787.5 sq m

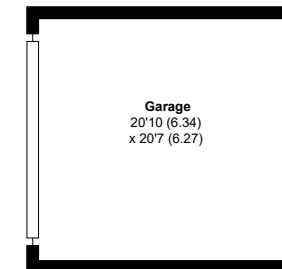
For identification only - Not to scale



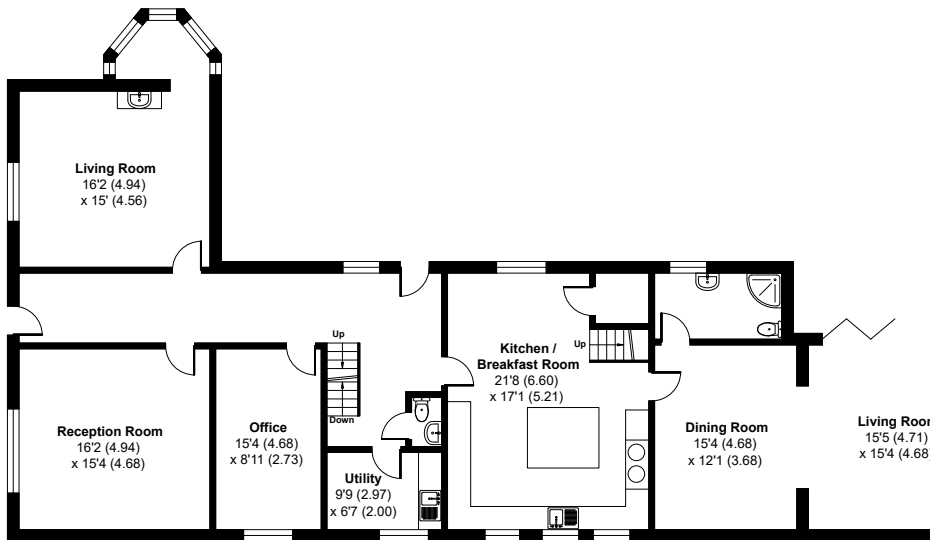
FIRST FLOOR



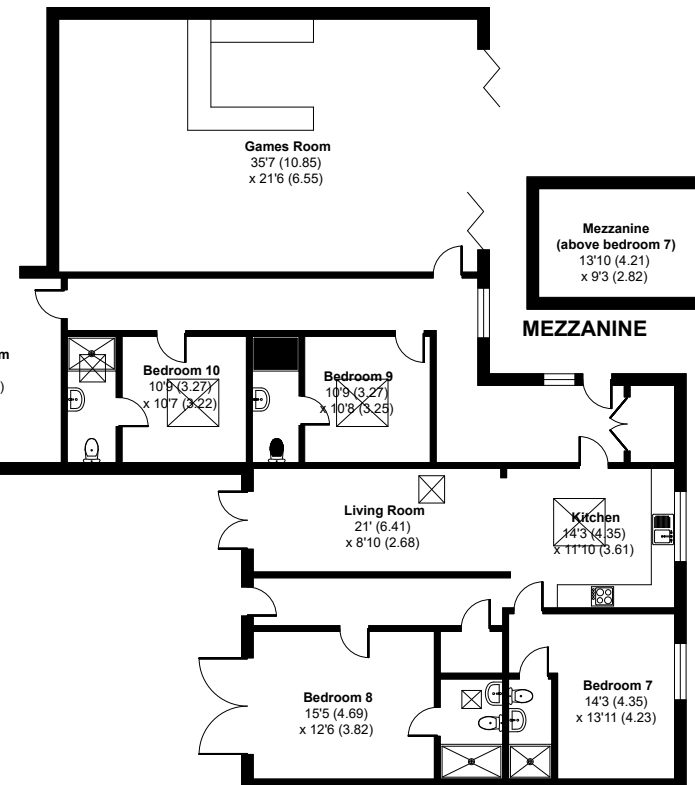
SECOND FLOOR



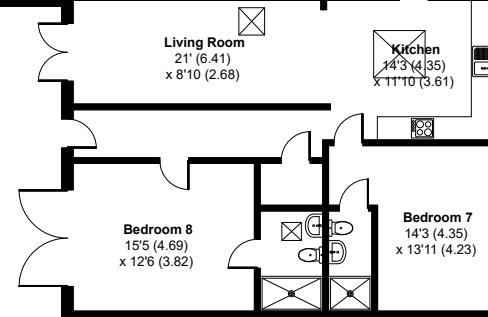
GARAGE



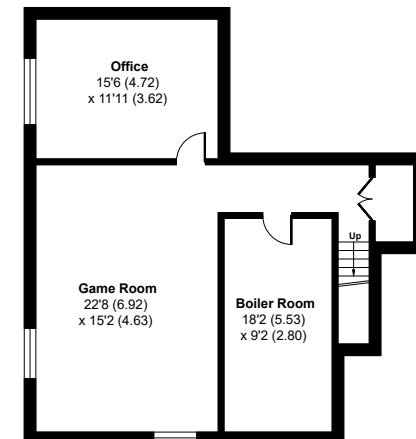
GROUND FLOOR



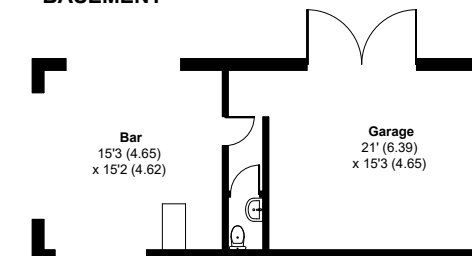
BASEMENT



OUTBUILDING



BASEMENT



OUTBUILDING