



James Chiltern  
Estate Agents



## 15 Pavement Square, Croydon, CR0 6TL

Offers In Excess Of £365,000

- Exceptional penthouse apartment
- Large open-plan kitchen & living area
- Rare opportunity within the area
- Ideal as a luxury home or investment property
- Private rooftop balcony / garden
- Two French doors flooding the space with natural light
- Excellent transport links nearby
- Two very spacious double bedrooms
- Beautifully designed, modern layout
- Close to shops and local amenities

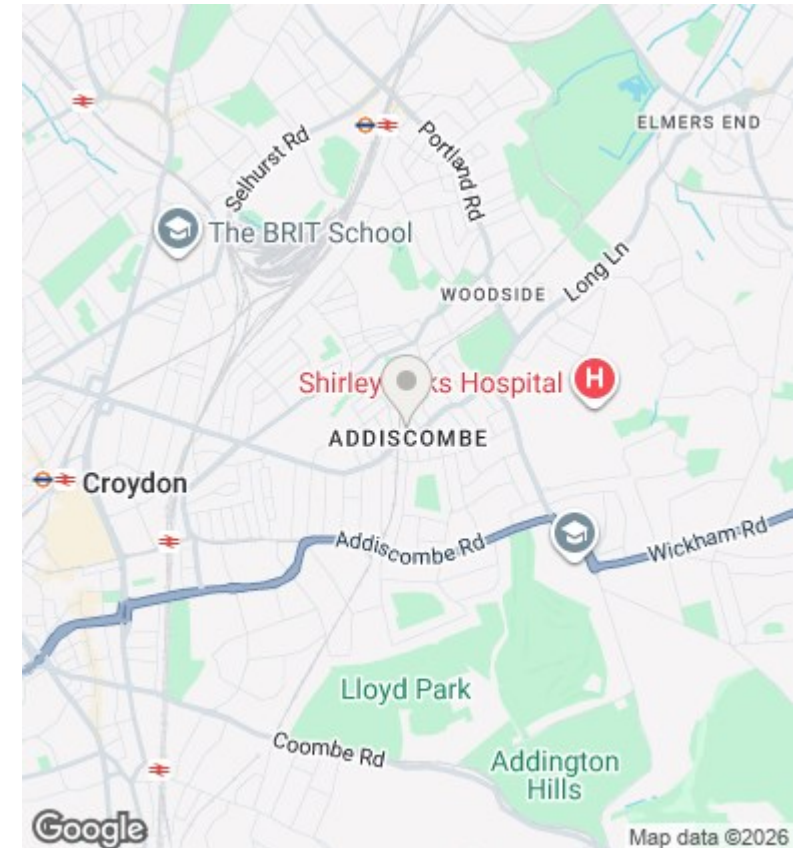
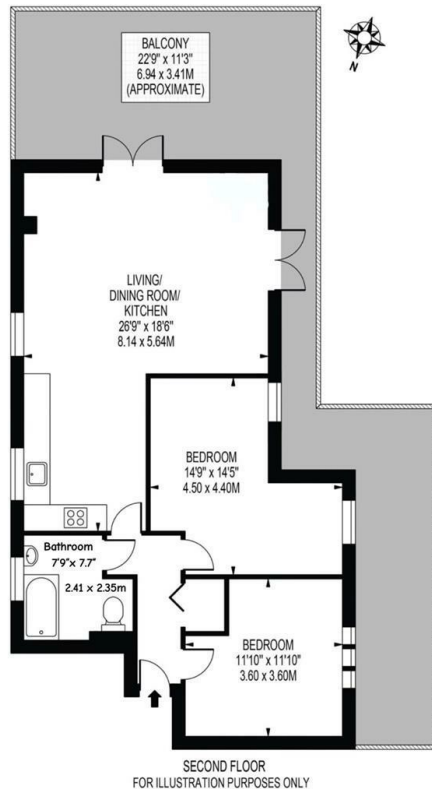
182 London Road, Croydon, Surrey, CR0 2TE  
0208 681 8133

lettings@jameschiltern.uk  
www.jameschiltern.uk



# PAVEMENT SQUARE

APPROXIMATE GROSS INTERNAL FLOOR AREA: 808 SQ FT - 75.06 SQ M



## Directions

## Viewings

Viewings by arrangement only. Call 0208 681 8133 to make an appointment.

## Council Tax Band

C

## EPC Rating:

C

Energy Efficiency Rating		
	Current	Potential
Very energy efficient - lower running costs		
(92 plus) A		
(81-91) B		
(69-80) C	79	79
(55-68) D		
(39-54) E		
(21-38) F		
(1-20) G		
Not energy efficient - higher running costs		
England & Wales	EU Directive 2002/91/EC	