

**Craster Road, Brixton, SW2**

1 bedroom flat - conversion for sale

£325,000

Leasehold

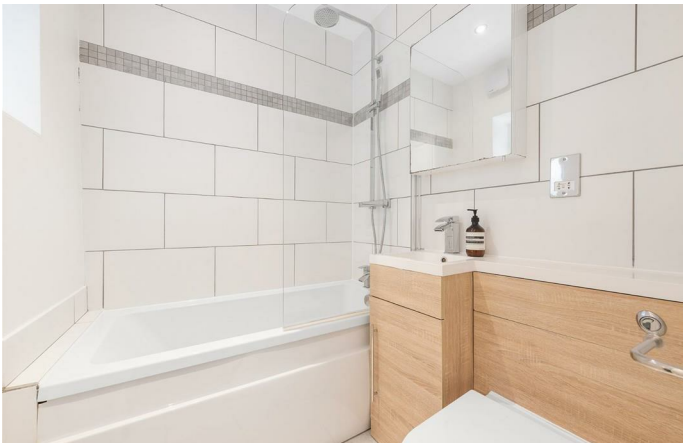
Property Details

A charming one double bedroom ground floor apartment set within an attractive Victorian conversion on Craster Road, a peaceful residential street moments from a parade of local shops and a tavern. Recently redecorated in February 2026, the property offers a fresh and neutral canvas ready for a purchaser to personalise. To the front, a bright bay-fronted reception room features high ceilings, fitted shelving and plantation shutters across the lower half of the windows, allowing natural light to pour in while maintaining privacy. Adjacent, the separate kitchen wraps neatly around the space with shaker-style cabinetry providing generous storage and preparation areas, with two internal windows creating a sociable connection to the living room. Quietly positioned to the rear, the double bedroom enjoys leafy views, high ceilings and engineered wood flooring, with space for wardrobes and storage either side of the chimney breast. A neutral bathroom with fitted storage and a bathtub with overhead shower completes the home.

Council tax band B **EPC rating D (68)**

Features

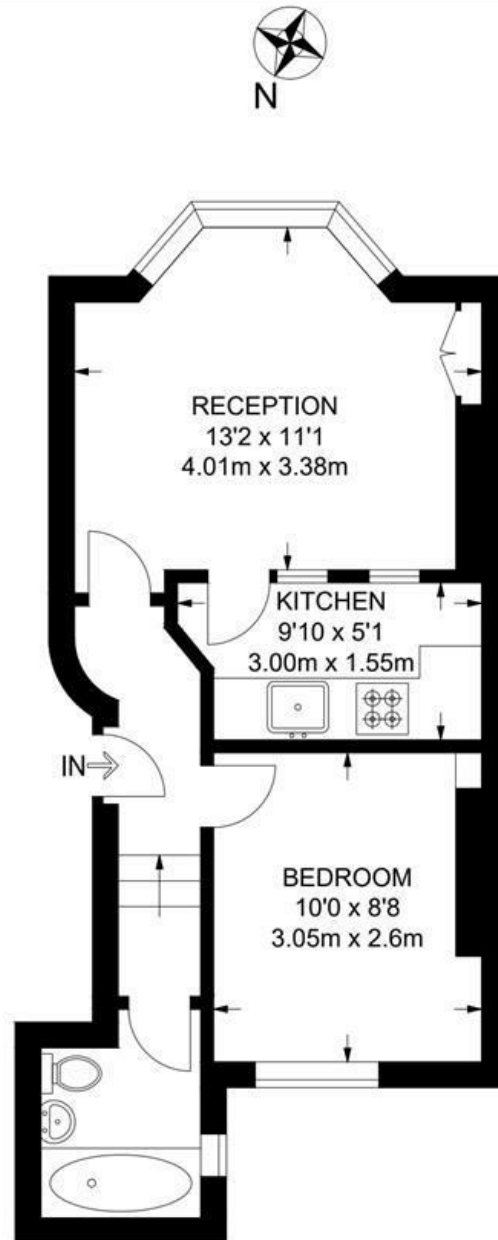
- One double bedroom
- Victorian conversion
- High ceilings
- Recently redecorated
- Exciting opportunity to add your own decorative touches
- Local tavern, post office, shop and record store
- Brockwell Park a short stroll away
- Walking distance to Brixton and Herne Hill
- Access to the Victoria Line, Thameslink and Overground



Craster Road, Brixton, SW2

Craster Road, SW2
1 Bedroom Flat

APPROXIMATE GROSS INTERNAL AREA: **348 SQ FT / 32.3 SQ M**



GROUND FLOOR



While we try our very best, floor plans are produced as a guide only and we take no responsibility for the precise accuracy with which any property is represented.

Craster Road, Brixton, SW2

