



## 15 Llangorse Close

Stourport-on-Severn, DY13 8LJ

Andrew Grant

# 15 Llangorse Close

Stourport-on-Severn, DY13 8LJ

**3 Bedrooms   1 Bathroom   2 Reception Rooms**

Recently refreshed semi-detached home offering extended kitchen, two reception rooms, three bedrooms and landscaped garden with decking, bar and driveway parking

- Spacious semi-detached home with modern interiors, extended ground floor and three generous bedrooms
- Wood-burning stove in the living room and French doors from the dining room to the decking outside
- Landscaped garden with decking, lawn, raised beds, shed and covered outdoor bar
- Wide tarmac driveway providing ample off-road parking and secure side access to the garden
- End of cul-de-sac location, convenient for schools, shops, leisure facilities and road links around Stourport-on-Severn

This semi-detached home has been thoughtfully extended and updated to provide balanced accommodation for modern living. A welcoming hall leads to a spacious sitting room with wood-burning stove, a separate dining room and a well-equipped kitchen with adjoining utility and cloakroom. Three double bedrooms are served by a contemporary bathroom with bath and separate shower. Outside, a landscaped garden combines decking, lawn, raised beds and an outdoor bar, while a wide driveway provides ample parking.

**1206 sq ft (112.0 sq m)**





## The kitchen

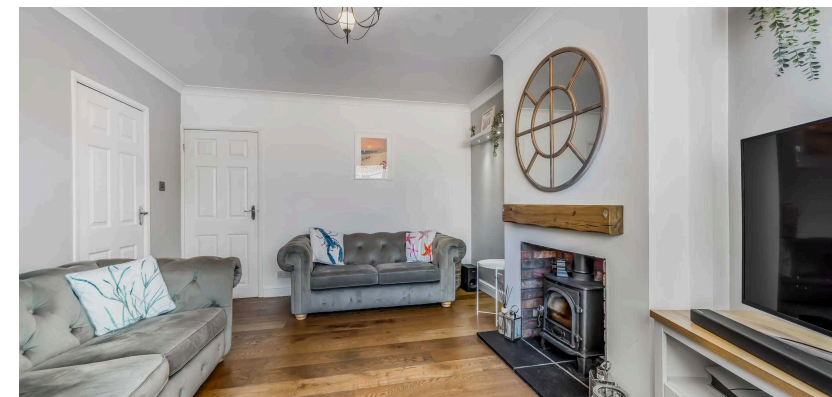
Serving as the culinary hub of the home, the kitchen is designed for keen cooks. Oak-effect cabinets and dark laminate worktops are complimented by matching tiled splashbacks. Integrated double ovens and a hob with chimney hood sit alongside a double sink under the window. A herringbone-patterned floor brings warmth, while a door leads directly to the garden and doors connect to the utility and dining room.





## The living room

A comfortable setting for everyday relaxation, the living room invites you to unwind after a long day. A wood-burning stove set into a brick chimney with hearth and rustic timber mantel creates a focal point. The wide picture window brings in ample natural light and the wood-plank floor complements the neutral décor. Built-in shelving provides display space and doors lead to the hallway and dining room.





## The dining room

Ideal for family meals and entertaining, the dining room sits between the living areas and garden. Full-height glazed French doors open to the decked terrace, creating an easy flow between indoors and outside. Track lighting illuminates the room and there is ample space for a table and sideboard. The hardwood floor continues from the sitting room, enhancing the sense of continuity.



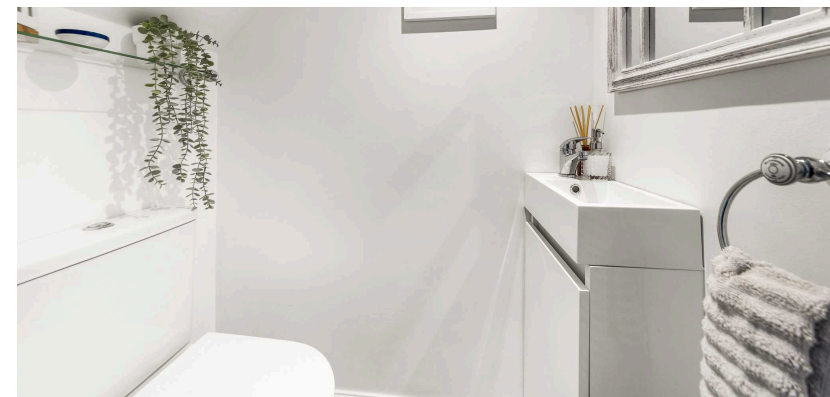
## The utility

For practicality, the utility room keeps laundry tasks separate from the main kitchen. Contemporary cabinets with wood-effect worktops house a washing machine and dryer beneath a broad window, and there is space for a tall fridge freezer and microwave. The herringbone flooring runs through from the kitchen to maintain cohesion.



## The hallway and cloakroom

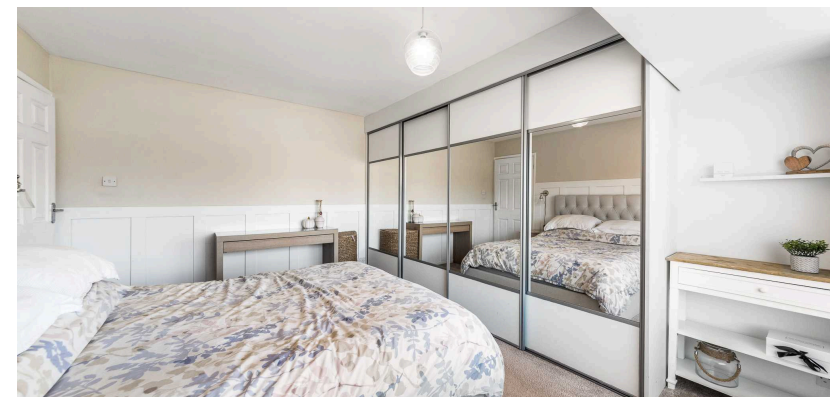
The hallway sets the tone with a neat wood-effect floor and carpeted staircase rising to the first floor. Recessed downlights brighten the neutral walls and a useful under-stairs cloakroom includes a concealed-cistern WC and slimline basin. A radiator warms the space and doors open to the sitting room, dining room and kitchen.





## The primary bedroom

The primary bedroom is a restful retreat with generous proportions for a double bed and furniture. A wide casement window stretches across one wall and built-in sliding wardrobes span the opposite wall. Panelled wainscoting provides character and bedside wall lights are installed for reading. Soft carpet flooring completes the scheme.





## The second bedroom

A flexible second bedroom offers space for children, guests or a study. A long window along one wall provides outlooks over the garden and fitted shelving offers handy storage. The room can accommodate two small double beds and features wood-style flooring for easy upkeep.



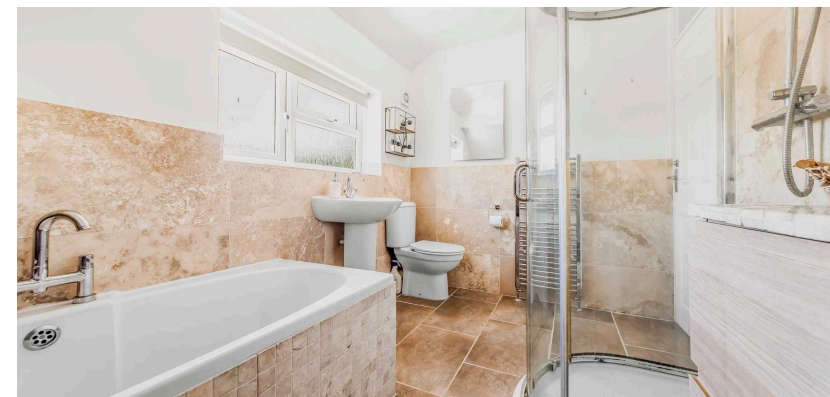
## The third bedroom

Tucked beneath the roofline, the third bedroom provides a cosy and versatile space. A dormer window draws in light and an alcove provides opportunity to house a double bed or study area. Sloping ceilings add character, making this room an ideal teenager's room, hobby space or home office.



## The bathroom

The family bathroom has been finished in timeless neutral tones. A tiled bath with mosaic side sits opposite a curved glass shower enclosure, offering options for quick or leisurely bathing. Travertine-style tiling extends across the floor and halfway up the walls, while a pedestal basin and close-coupled WC complete the suite. A chrome towel rail keeps the room warm and tidy.





## The garden

Outdoors, the landscaped garden provides a remarkable extension to the living space. A decked terrace lies immediately outside the French doors, leading to a lawn framed by raised beds brimming with flowers and shrubs. A covered outdoor bar with built-in space for a barbecue sits to one side and a shed and patio seating area occupy the far end. Timber fencing and mature palms ensure privacy and shelter.







## The driveway and parking

At the front of the home, a wide tarmac driveway ensures convenient arrivals. The drive is bordered by a low brick wall and offers off-road parking for multiple vehicles, with the added benefit of an EV charger. A pathway leads to the front door, and a gate to the side provides access to the garden. This arrangement makes parking simple for family and visitors.

## Location

Stourport-on-Severn is a riverside town in Worcestershire offering a blend of historic charm and everyday convenience. Residents enjoy a variety of shops, cafes and leisure facilities, together with primary and secondary schools in the area. The River Severn and canal basins provide opportunities for walking and boating, and nearby woodlands and parks offer additional green spaces. Excellent road connections link Stourport to Kidderminster, Worcester and the wider region, while local bus routes support commuting and daily travel. Llangorse Close occupies a quiet residential position within easy reach of these amenities.

## Services

The property benefits from mains gas, electricity, water and drainage.

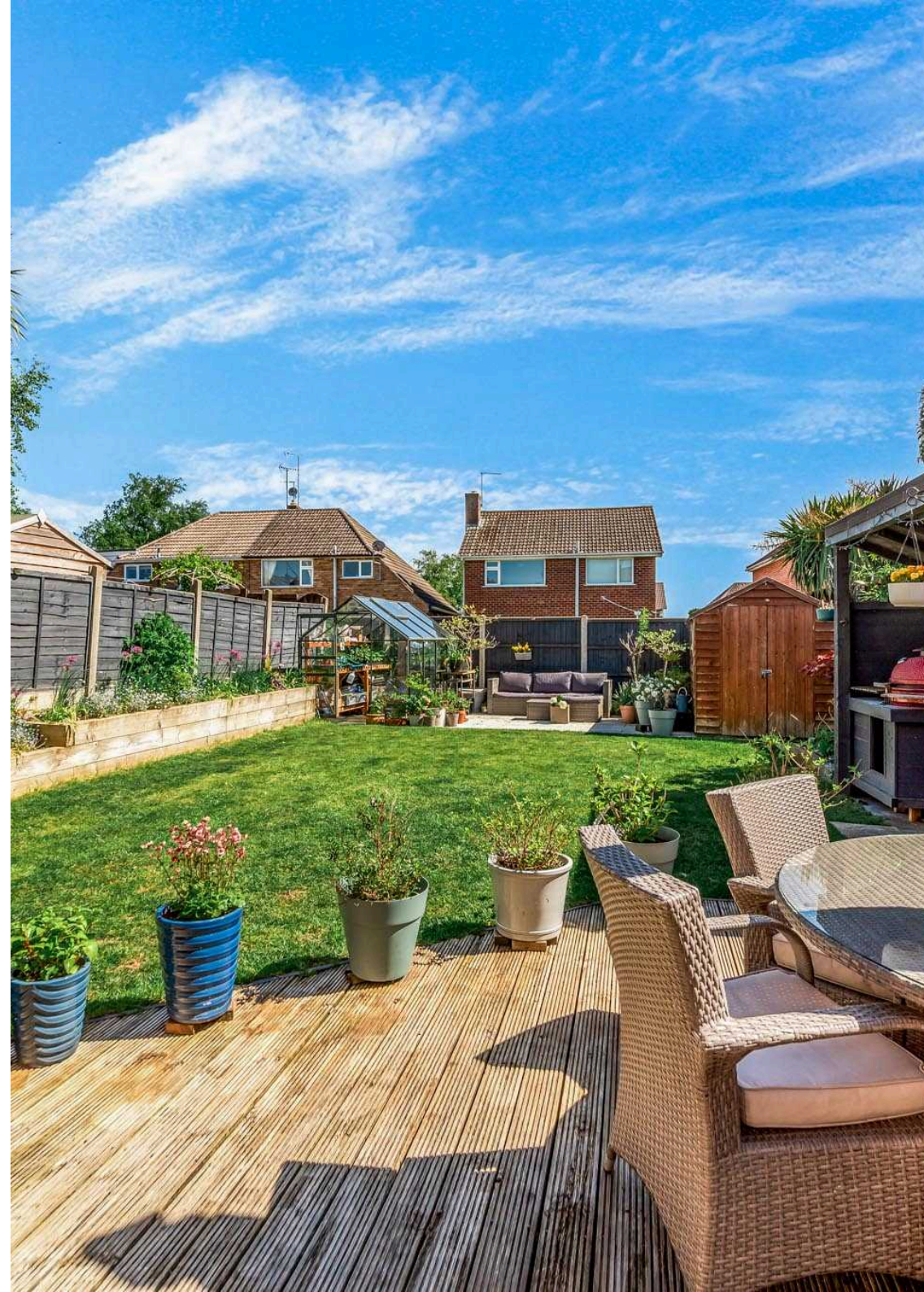
Broadband Speed: Ultrafast broadband available. Download speeds up to 2000 Mbps and upload speeds up to 2000 Mbps (source: Ofcom checker).

Mobile Coverage: Likely available from EE, Three, O2 and Vodafone (source: Ofcom checker).

Flood Risk (Long-term forecast): According to the Environment Agency's long-term flood risk data, the property is currently at very low risk for river and surface water flooding.

## Council Tax

The Council Tax for this property is Band C.



# Llangorse Close

Approximate Gross Internal Area  
 Ground Floor = 57.1 sq m / 615 sq ft  
 First Floor = 54.9 sq m / 591 sq ft  
 Total = 112.0 sq m / 1206 sq ft

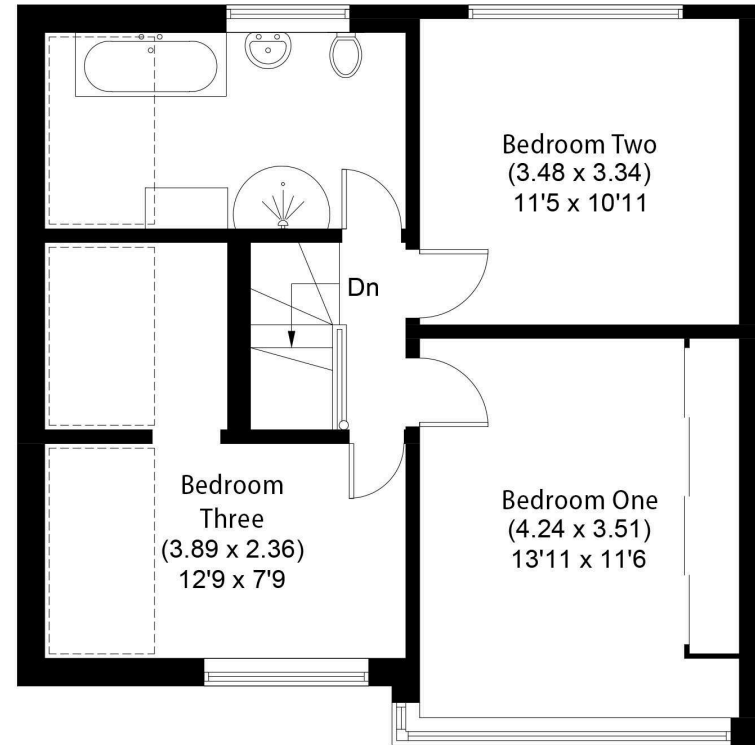
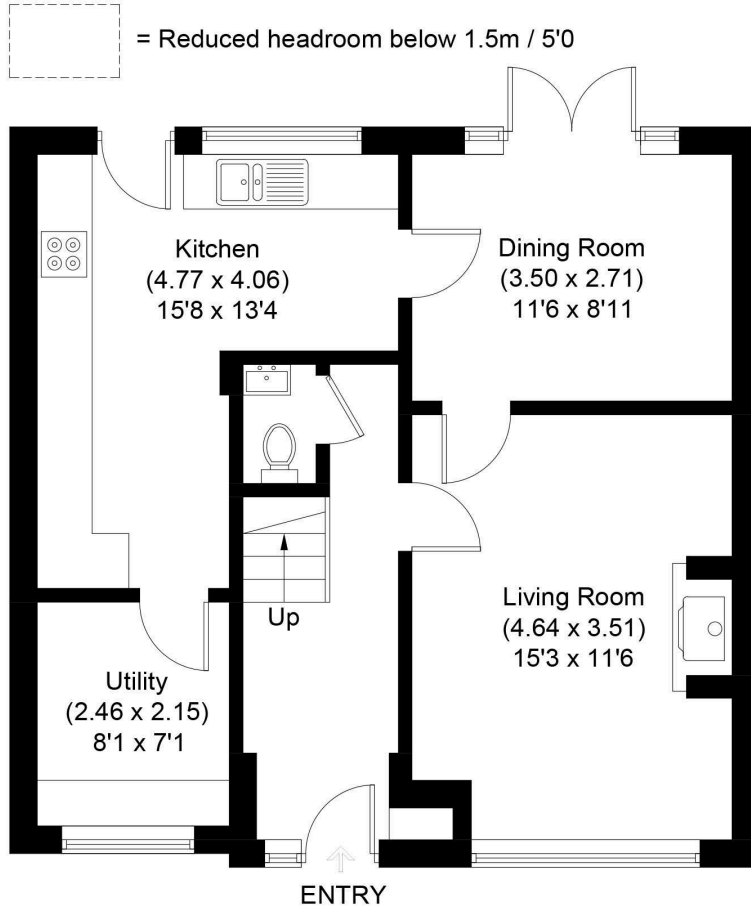
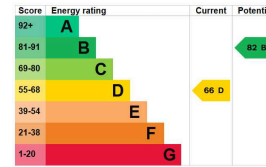


Illustration for identification purposes only, measurements are approximate, not to scale.



Andrew Grant

T. 01905 734734

E. [hello@andrewgrant.com](mailto:hello@andrewgrant.com)

[andrewgrant.com](http://andrewgrant.com)