



## Steeplechase Road, £210,000

- Two Double Bedrooms
- Driveway
- Ready to move in Conditions
- Council tax band D
- EPC Rating: B



 2  1  1



## About the property

A well-presented two-bedroom semi-detached house offering comfortable and practical living. The ground floor comprises a bright and welcoming living room, ideal for relaxing or entertaining guests. A convenient cloakroom adds everyday practicality, while the spacious kitchen diner provides ample room for cooking, dining, and family gatherings. From here, doors lead directly out to the rear garden, creating a seamless indoor–outdoor flow perfect for warmer months.

Upstairs, the first floor hosts two generous double bedrooms, both offering comfortable accommodation and flexibility for families, guests, or home working. A modern family bathroom serves the property, finished to a good standard.

Externally, the home benefits from a private rear garden, ideal for outdoor enjoyment and entertaining. Situated in a desirable area, the property is conveniently located close to well-regarded schools, local parks, and a range of shops and amenities, making it an excellent choice for families and professionals alike. The home falls within council tax band D, offering a balanced combination of comfort, convenience, and value in a sought-after residential setting.

With its well-proportioned layout, natural light, and functional design, this property presents an ideal opportunity for first-time buyers or downsizers. There is potential to personalise the interior to suit individual tastes, while maintaining its practical appeal. Nearby transport links provide easy access to surrounding areas.



## Accommodation

### Entrance Hallway

### Lounge

15' 2" x 9' 7" ( 4.62m x 2.92m )

### Kitchen

12' 7" x 8' ( 3.84m x 2.44m )

### Cloakroom

### Landing

### Bedroom 1

12' 10" x 8' 6" ( 3.91m x 2.59m )

### Bedroom 2

12' 9" x 8' 2" ( 3.89m x 2.49m )

### Bathroom

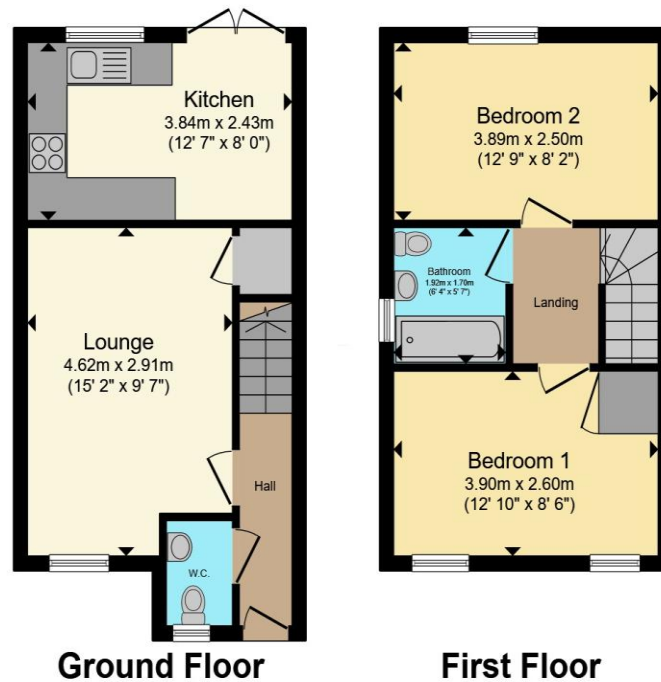
6' 4" x 5' 7" ( 1.93m x 1.70m )

### Garden

01633 221892

newport@peteralan.co.uk

## Floorplan



Total floor area 59.6 m<sup>2</sup> (642 sq.ft.) approx

This floor plan is for illustrative purposes only. It is not drawn to scale. Any measurements, floor areas (including any total floor area), openings and orientation are approximate. No details are guaranteed, they cannot be relied upon for any purpose and they do not form part of any agreement. No liability is taken for any error, omission or misstatement. A party must rely upon its own inspection(s). Powered by [www.propertybox.io](http://www.propertybox.io)



## Important Information

Note while we endeavour to make our sales details accurate and reliable, if there is any point which is of particular interest to you, please contact the office and we will be pleased to confirm the position for you. We have not personally tested any apparatus, equipment, fixtures, fittings or services and cannot verify they are in working order or fit for their purposes. Nothing in these particulars is intended to indicate that carpets or curtains, furnishings or fittings, electrical goods (whether wired or not). Gas fires or light fittings or any other fixtures not expressly included form part of the property offered for sale. This computer generated Floorplan, if applicable, is intended as a general guide to the layout and design of the property. It is not to scale and should not be relied upon for dimensions. Tenure: We cannot confirm the tenure of the property as we have not had access to the legal documents. The buyer is advised to obtain verification from their solicitor or surveyor.

Peter Alan Limited is registered in England and Wales under company number 2073153, Registered Office is Cumbria House, 16-20 Hockliffe Street, Leighton Buzzard, Bedfordshire, LU7 1GN. VAT Registration Number is 500 2481 05. For activities relating to regulated mortgages and non-investment insurance contracts, Peter Alan Limited is an appointed representative of Connells Limited which is authorised and regulated by the Financial Conduct Authority. Connells Limited's Financial Services Register number is 302221. Most buy-to-let

