



1 Broad Street, Barry, Vale Of Glamorgan, CF62 7AA  
01446 736888 | enquiries@ninaestateagents.co.uk  
www.ninaestateagents.co.uk



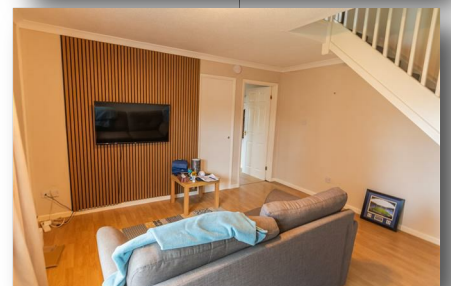
## 27 Woodham Park, Barry CF62 8JF £850 Per Month

2 BEDS | 1 BATH | 1 RECEPT | EPC RATING

Unfurnished two bedroom semi-detached dwelling located in a quiet Cul De Sac, placed off Colcot Road in close proximity to schools, public transport, Barry Hospital, local shops and with easy access to link roads leading to Cardiff and M4 corridor.

Briefly comprising, entrance hallway, fitted kitchen to front, living/dining room with stairs rising and garden access. To the first floor, one double bedroom, cot/office room and a family bathroom. driveway to side, an enclosed low maintenance garden with shed.

EPC - TBC, Council Tax Band - B, Minimum affordability £25,500 PA, Holding fee £196.00, Deposit £980.00.



Energy Efficiency Rating		
	Current	Potential
Very energy efficient - lower running costs		
(92 plus) <b>A</b>		
(81-91) <b>B</b>		
(69-80) <b>C</b>		
(55-68) <b>D</b>		
(39-54) <b>E</b>		
(21-38) <b>F</b>		
(1-20) <b>G</b>		
Not energy efficient - higher running costs		
<b>England &amp; Wales</b>	EU Directive 2002/91/EC	

Environmental Impact (CO <sub>2</sub> ) Rating		
	Current	Potential
Very environmentally friendly - lower CO <sub>2</sub> emissions		
(92 plus) <b>A</b>		
(81-91) <b>B</b>		
(69-80) <b>C</b>		
(55-68) <b>D</b>		
(39-54) <b>E</b>		
(21-38) <b>F</b>		
(1-20) <b>G</b>		
Not environmentally friendly - higher CO <sub>2</sub> emissions		
<b>England &amp; Wales</b>	EU Directive 2002/91/EC	



[www.ninaestateagents.co.uk](http://www.ninaestateagents.co.uk)



Company No: 5972152. Registered Office: 1 Broad Street, Barry, Vale of Glamorgan, CF62 7AA. VAT No. 850 441 350