

CLOSE TO TOWN  
CENTRE



Apartment (EPC Rating: B)

# GOODWIN GARDENS, EVESHAM, WR11 3DP

## £825 PCM

**AVON**  
ESTATES  
SALES & LETTINGS

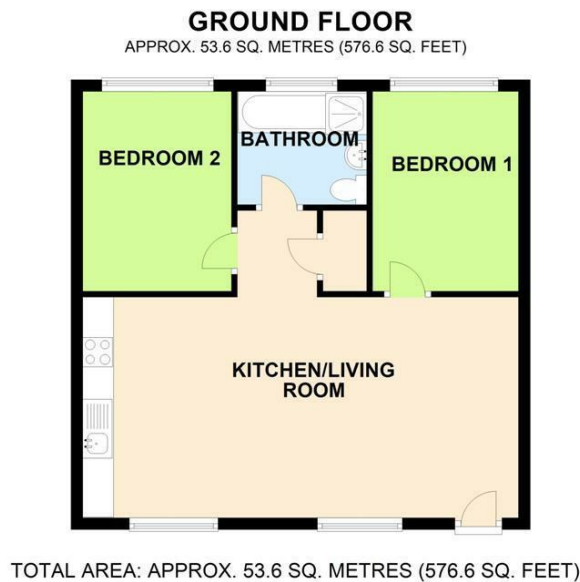
 2  1  1  B

# 2 Bedroom Apartment located in Evesham

A Two Double Bedroom first floor apartment situated in Evesham. The accommodation comprises an Open Plan Living/ Kitchen Area at over 25ft and with a Modern Kitchen as well as a family bathroom. The property also benefits from Gas Central Heating, Double Glazing and a reserved Off Road Parking space that may be withdrawn if needed back by the freeholder. EPC = B. Council Tax Band = B.

Deposit: £950 which is returnable in full subject to the satisfactory condition of the property at the end of the term.

Holding Deposit - £190 may be requested to secure a property (subject to references, contract & landlords approval). Non-refundable if the tenant withdraws. Otherwise used towards first rent or deposit, after signing the tenancy agreement.



Council Tax Band = B

Energy Performance Graph = B

Call us on

**01386 257180**

[lettings@avonestates.net](mailto:lettings@avonestates.net)

[www.avonestates.net](http://www.avonestates.net)

Energy Efficiency Rating		Current	Potential
Very energy efficient - lower running costs			
(92 plus) <b>A</b>			
(81-91) <b>B</b>		<b>82</b>	<b>82</b>
(69-80) <b>C</b>			
(55-68) <b>D</b>			
(39-54) <b>E</b>			
(21-38) <b>F</b>			
(1-20) <b>G</b>			
Not energy efficient - higher running costs			
<b>England &amp; Wales</b>	EU Directive 2002/91/EC		

Agents Note: Whilst every care has been taken to prepare these particulars, they are for guidance purposes only. All measurements are approximate and are for general guidance purposes only and whilst every care has been taken to ensure their accuracy, they should not be relied upon and potential buyers are advised to recheck the measurements.