



4 Bedroom Mid Terraced House located in Tiptree.

Find us on..



JOHN ALEXANDER
ESTATE AGENTS

Wilkin Drive
Tiptree
Colchester
CO5 0QP



4



2



2

Guide Price £375,000
to £400,000

FULL DESCRIPTION

OVERVIEW

We are delighted to offer this Four bedroom family home benefiting from an En-Suite shower room to the principle bedroom, garage and driveway and enclosed rear garden. NO CHAIN!!!

ENTRANCE HALL

Stairs to first floor, radiator.

CLOAKROOM

Low level WC, wash basin, radiator, obscure double glazed window to front.

LOUNGE

14' 5" x 12' 5" (4.39m x 3.78m)

Double glazed window to front, two radiators, electric fire, archway through to dining room.

DINING ROOM

11' 2" x 8' 1" (3.4m x 2.46m)

Double glazed French doors to rear, radiator.

CONSERVATORY

9' 8" x 8' 6" (2.95m x 2.59m)

Double glazed windows, French doors to garden.

KITCHEN

11' 2" x 7' 2" (3.4m x 2.18m)

One and a half bowl single drainer sink unit with cupboards under, roll top work surfaces, built in oven, hob and extractor fan, space for washing machine and fridge freezer, radiator, wall mounted gas boiler concealed in cupboard space, double glazed window to rear, door to garage.

LANDING

Access to loft space, radiator, airing cupboard.

BEDROOM ONE

12' 0" x 9' 10" (3.66m x 3m)

Double glazed window to rear, radiator.

EN-SUITE SHOWER ROOM

Tiled shower, low level WC, wash basin, radiator.

BEDROOM TWO

10' 7" x 10' 5" (3.23m x 3.18m)

Double glazed window to front, radiator, built in mirrored wardrobes, access to second loft.

BEDROOM THREE

15' 7" x 11' 0" (4.75m x 3.35m)

Double glazed window to front, fitted wardrobes and shelving, radiator.

BEDROOM FOUR

8' 7" x 6' 9" (2.62m x 2.06m)

Double glazed window to rear, radiator.



BATHROOM

White suite comprising of panelled bath with shower attachment and guard, low level WC, wash basin, radiator, obscure double glazed window to rear.

OUTSIDE

To the front aspect there is a block paved driveway providing off road parking leading to garage with up and over door, personal door to garden, space for washing machine and tumble dryer.





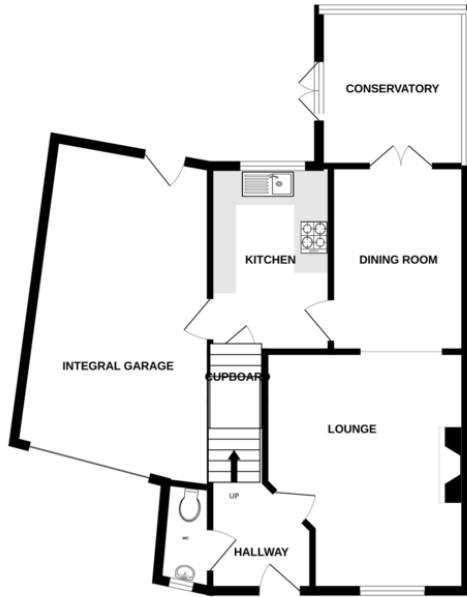


Wilkin Drive, Tiptree CO5 0QP

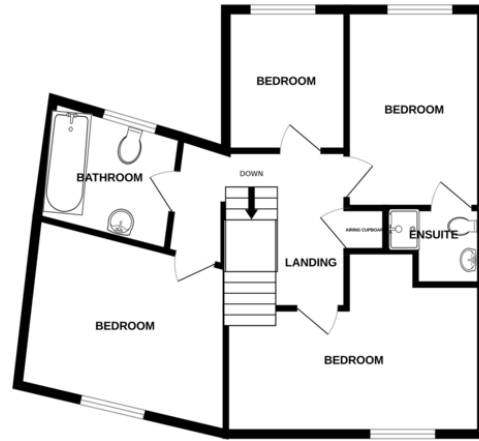


FLOORPLAN

GROUND FLOOR



1ST FLOOR



Whilst every attempt has been made to ensure the accuracy of the floorplan contained here, measurements of doors, windows, rooms and any other items are approximate and no responsibility is taken for any error, omission or mis-statement. This plan is for illustrative purposes only and should be used as such by any prospective purchaser. The services, systems and appliances shown have not been tested and no guarantee as to their operability or efficiency can be given.
Made with Metropix ©2026

CONTACT
1 Church Road
Tiptree
Colchester
Essex
CO5 0LG

E info@john-alexander.co.uk

T 01621 814334 www.john-alexander.co.uk

Find us on..



JOHN ALEXANDER
ESTATE AGENTS