

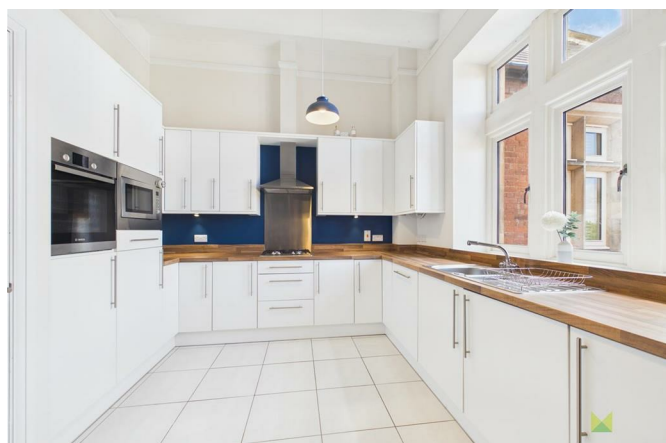
95 Leighton Park Bicton Heath Shrewsbury SY3 5FS



1 Bedroom Apartment
£850 PCM

The features

- ONE BEDROOM PART FURNISHED APARTMENT
- ENTRANCE HALL
- BATHROOM
- ALLOCATED PARKING SPACE
- EPC RATING C
- GAS CENTRAL HEATING AND DOUBLE GLAZING
- OPEN PLAN KITCHEN/LIVING ROOM
- DOUBLE BEDROOM WITH FITTED WARDROBES
- VIEWING ESSENTIAL



****ONE BEDROOM PART FURNISHED APARTMENT****

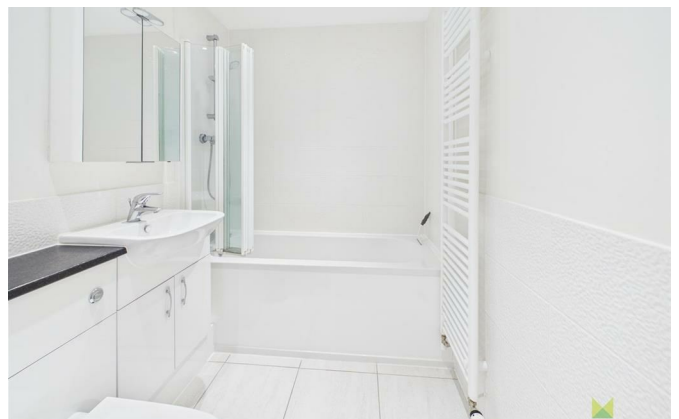
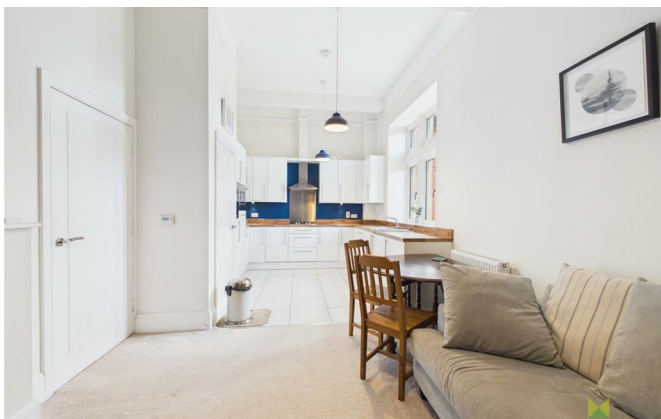
Situated in a sought after residential location, the property is well placed for easy access to the hospital, town centre and the bypass linking up with the M54 motorway network and local amenities. The accommodation briefly comprises: Personal Entrance Hallway. Attractive Spacious Kitchen/ Living Room, Double Bedroom, Fitted Bathroom. Allocated Parking.

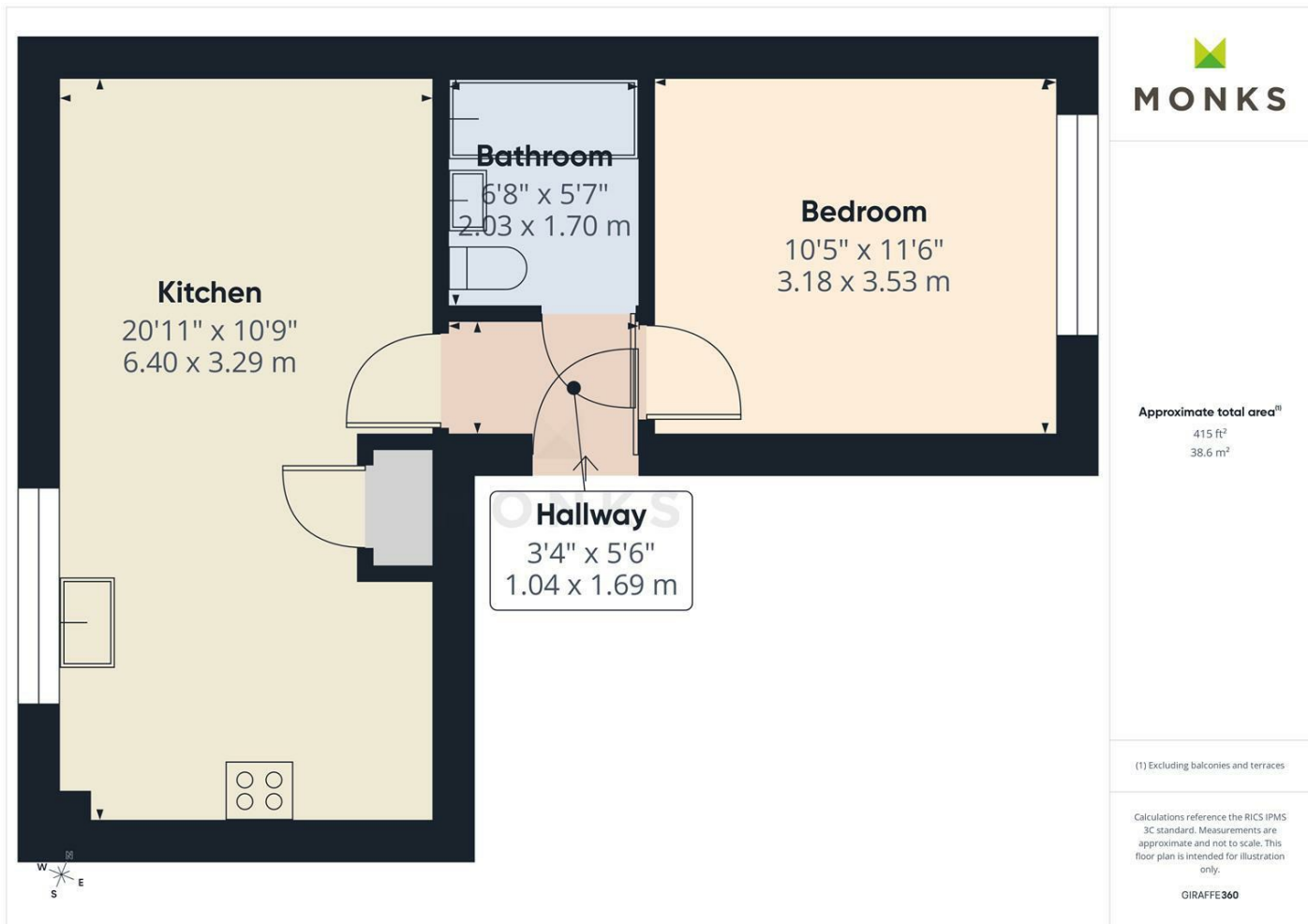
Property details

ENTRANCE HALLWAY	3'4" x 5'6" (1.04 x 1.69)
KITCHEN/LIVING ROOM	20'11" x 10'9" (6.4 x 3.29)
BATHROOM	6'7" x 5'6" (2.03 x 1.70)
BEDROOM	10'5" x 10'4" (3.18 x 3.153)

95 Leighton Park, Bicton Heath, Shrewsbury, SY3 5FS.

1 Bedroom Apartment
£850 PCM





Judy Bourne

Director at Monks
judy@monks.co.uk

Get in touch

Call. 01743 361422
Email. info@monks.co.uk
Click. www.monks.co.uk

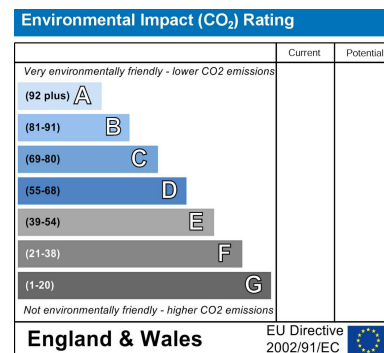
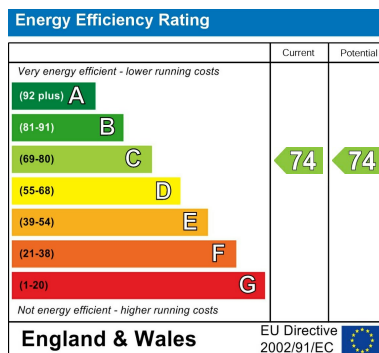
Shrewsbury office

10a-11 Shoplatch,
Shrewsbury, Shropshire, SY1

We're available 7 days a week

HOME – four words that define who,
and what we are:

Honest, Original, Motivated, Empathetic



Monks for themselves and for the vendors of this property, whose agents they are give notice that:

- These particulars provide a general outline only for the guidance of intended purchasers and do not constitute part of an offer or contract.
- All descriptions, dimensions and distances are approximate, references to state and condition, relevant permissions for use and occupation and other details are provided in good faith and believed to be correct.
- No person in the employment of Monks has any authority to make or give any representation or warranty whatever in relation to this property.
- Electrics and other appliances mentioned in these particulars have not been tested by Monks. Therefore prospective purchasers must satisfy themselves as to their working order.