



Fairfield Street, SW18

£1,700 Per calendar month

A spacious double bedroom flat in a purpose built block (with lift). The reception room is has wooden flooring and lots of natural sunlight with the newly fitted kitchen.

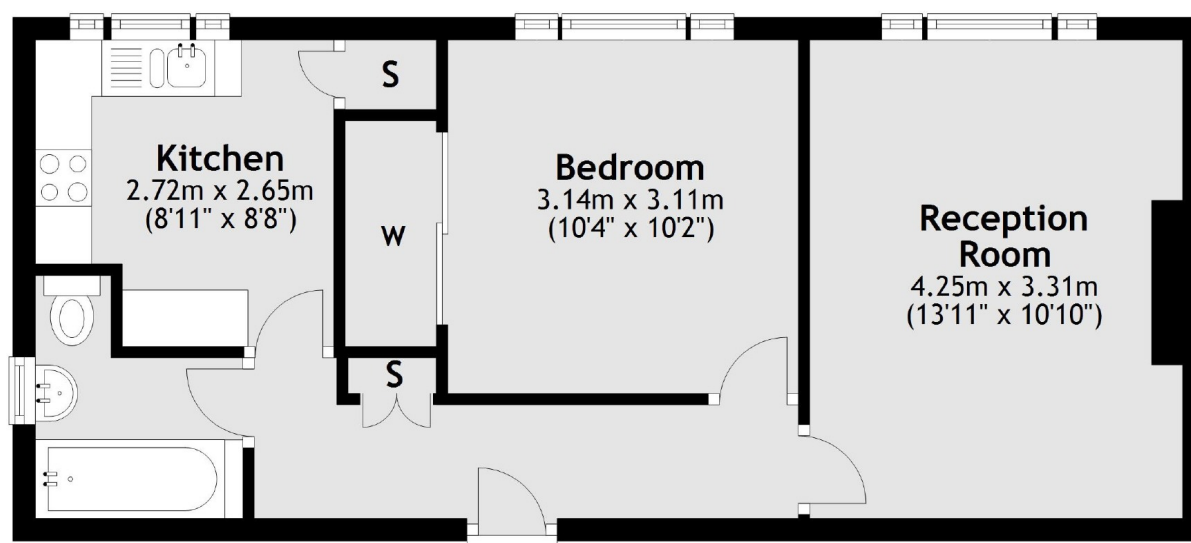
Fairfield Court is 0.2 miles from Wandsworth town station. Close to Pubs and restaurants in Wandsworth Town, as well as the Southside shopping centre and Wandsworth Common.

Features

- Wooden Flooring
- Lots of Natural Light
- Close to Transport
- One Double Bedroom
- Purpose Built
- Southside Shopping Centre

Fairfield Street, London, SW18

First Floor



Total area: approx. 43.3 sq. metres (465.6 sq. feet)