



Lauriston Road, E9

£700,000

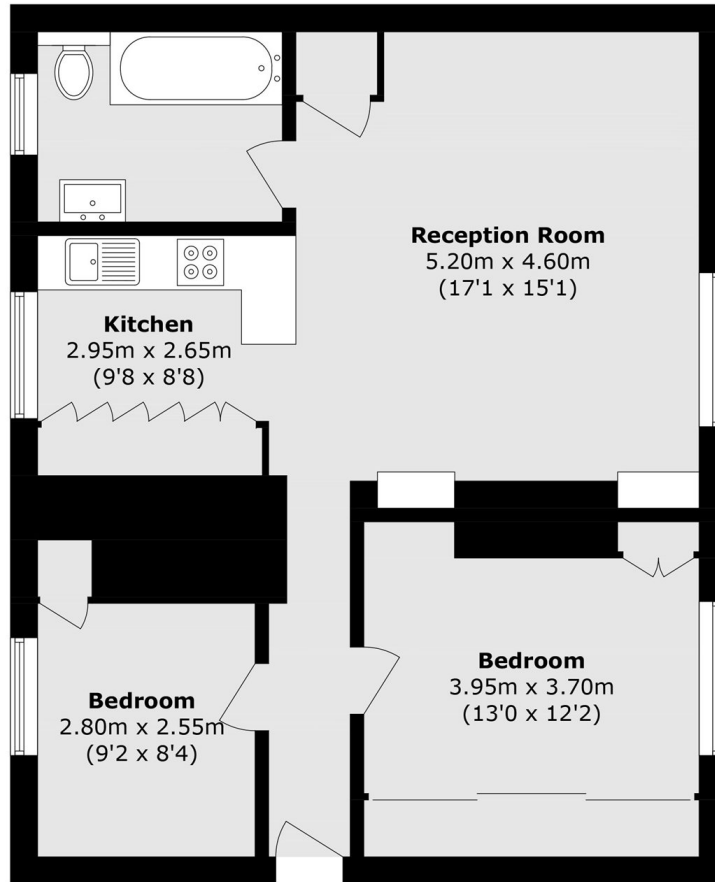
A two bedroom apartment located on the raised ground floor of Georgian conversion that comes with access to a shared garden. This property measures in excess of 687 square feet and has been lovingly maintained by the current owners. There is period features throughout including feature fireplace high ceilings and floor to ceiling sash windows. There is a stylish kitchen with integrated appliances and peninsula island, expansive living room with wooden flooring and a modern bathroom. This property is being offered chain free.

Ideally located moments away from the sought after Victoria Park Village, offering endless amenities, fine property and ample green spaces such as Well Street Common and Victoria Park. Also nearby to London Fields and Homerton Overground Stations, making for great transport links into the city.

Features

- Two Double Bedrooms
- Period Features
- Wooden Flooring
- Georgian Conversion
- Victoria Park Village
- Shared Garden

Lauriston Road, London, E9



Total area (approx.): 67.3 sq. m (724.4 sq. ft)