



hamlyn
smith.


Park Crescent Place, Brighton, BN2 3HF

£425,000 - £450,000

hamlyn smith.

 2 Bedrooms

 1 Reception

 1 Bathroom

Nestled in the charming Park Crescent Place, Brighton, this delightful house offers a perfect blend of modern living and comfort. With a total floor area of approximately 55.4 square metres (596 square feet), this property is ideal for those seeking a stylish yet practical home.

- Guide price £425,000-£450,000
- 2 double bedrooms
- Modern kitchen and bathroom
- Polished floorboards throughout
- Cosy log burner in lounge
- Pretty westerly aspect patio
- Close to cafes and shops
- Easy stroll to town centre





hamlyn smith.

📍 50 Goldstone Villas, Hove, BN3 3RS

☎ 01273 762222

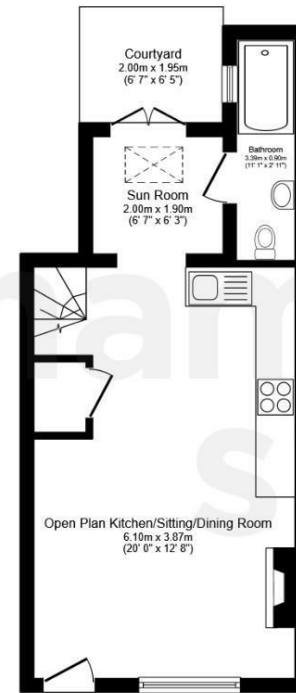
✉ hello@hamlynsmith.co.uk

The house features a spacious reception room that seamlessly flows into an open-plan living area, creating a warm and inviting atmosphere. The modern kitchen is well-equipped, making it a joy for any home cook to prepare meals and entertain guests.

This property boasts two well-proportioned bedrooms, providing ample space for relaxation and rest. The bathroom is thoughtfully designed, ensuring convenience and comfort for all residents.

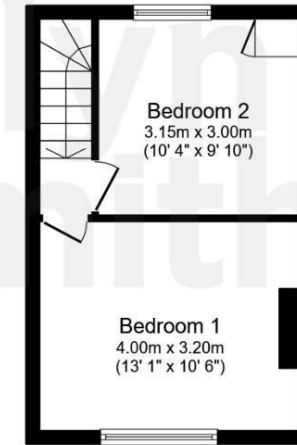
With a guide price of £425,000 to £450,000, this freehold house represents an excellent opportunity for both first-time buyers and those looking to invest in the vibrant Brighton property market. The location is superb, offering easy access to local amenities, transport links, and the stunning coastline that Brighton is renowned for.

In summary, this apartment in Park Crescent Place is a wonderful choice for anyone looking to enjoy the best of Brighton living. Don't miss the chance to make this lovely property your new home.



Ground Floor

Floor area 30.7 sq.m. (350 sq.ft.)



First Floor

Floor area 24.7 sq.m. (266 sq.ft.)

Total floor area: 55.4 sq.m. (596 sq.ft.)

This floor plan is for illustrative purposes only. It is not drawn to scale. Any measurements, floor areas (including any total floor area), openings and orientations are approximate. No details are guaranteed, they cannot be relied upon for any purpose and do not form any part of any agreement. No liability is taken for any error, omission or misstatement. A party must rely upon its own inspection(s). Powered by www.Propertybox.io

