



Norwood Park Road, SE27 | £895,000

020 8702 9333

crystalpalace@pedderproperty.com

pedder
We live local



In General

- Extended three bedroom semi-detached house
- Beautifully finished kitchen
- Warm and inviting accommodation
- Private access through garden to Norwood Park
- Highly regarded location
- Potential for loft conversion for 4th bedroom and bathroom (STP)
- Garden has electrical points and lighting

In Detail

A thoughtfully updated three-bedroom semi-detached home set on a friendly, well-regarded road in West Norwood, offering comfortable modern living with the park right on the doorstep.

The ground floor has a natural flow and an easy, everyday feel. The extended kitchen is a standout space designed for both cooking and spending time together — filled with natural light from a sky lantern and finished with dove-grey cabinetry, brushed brass details, quartz worktops, and a practical island that doubles as a social hub. The built-in seating area makes family meals and casual gatherings simple & relaxed.

Engineered oak flooring runs throughout, linking the kitchen to the dining area and a welcoming reception room. Here, bespoke shelving provides useful storage and display space, and a working gas fireplace adds a homely touch. A hidden utility room keeps laundry neatly out of the way, and there is also a guest WC on this level.

Upstairs, there are three well-proportioned bedrooms, including one with a full wall of fitted wardrobes and another with a bright bay window. A modern, fully tiled bathroom with underfloor heating completes this floor. The loft is generous and offers potential for future conversion (STP) if extra space is needed.

The south-easterly garden has been landscaped for low-maintenance enjoyment, with a patio for outdoor dining or relaxing. A gate at the rear opens straight into Norwood Park, a real advantage for dog owners, joggers, or anyone who enjoys having open green space close at hand. Side access adds day-to-day convenience.

Norwood Park Road has a genuine sense of community, with a mix of young families and long-term residents. The area benefits from good local schools, independent cafés, and reliable transport links from Gipsy Hill and West Norwood stations.

This is a home that combines thoughtful design with a relaxed, easy-going lifestyle — ideal for anyone looking for comfort, light, and access to green space.

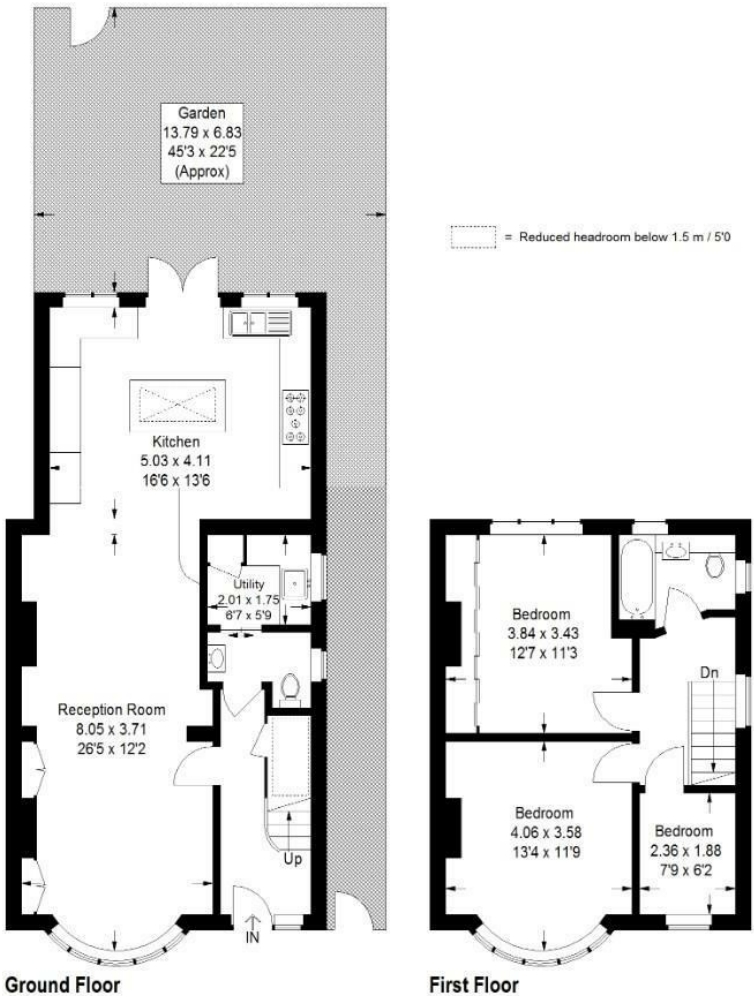
EPC: D | Council Tax: D



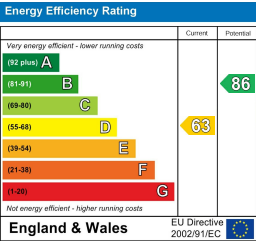
Floorplan

Norwood Park Road, SE27

Approximate Gross Internal Area
107.6 sq m / 1157 sq ft



Copyright www.pedderproperty.com © 2026
These plans are for representation purposes only as defined by RICS - Code of Measuring Practice.
Not drawn to Scale. Windows and door openings are approximate. Please check all dimensions,
shapes and compass bearings before making any decisions reliant upon them.



Pedder Property Ltd trading as Pedder for themselves and for the vendor/landlord of this property whose agents they are, give notice that (1) these particulars do not constitute any part of an offer or contract, (2) all statements contained within these particulars are made without responsibility on the part of Pedder or the vendor/landlord, (3) whilst made in good faith, none of the statements contained within these particulars are to be relied upon as a statement of representation or fact, (4) any intending purchaser/tenant must satisfy him/herself by inspection or otherwise as to the correctness of each of the statements contained within these particulars, (5) the vendor/landlord does not make or give either Pedder or any person in their employment any authority to make or give representation or warranty whatsoever in relation to this property.