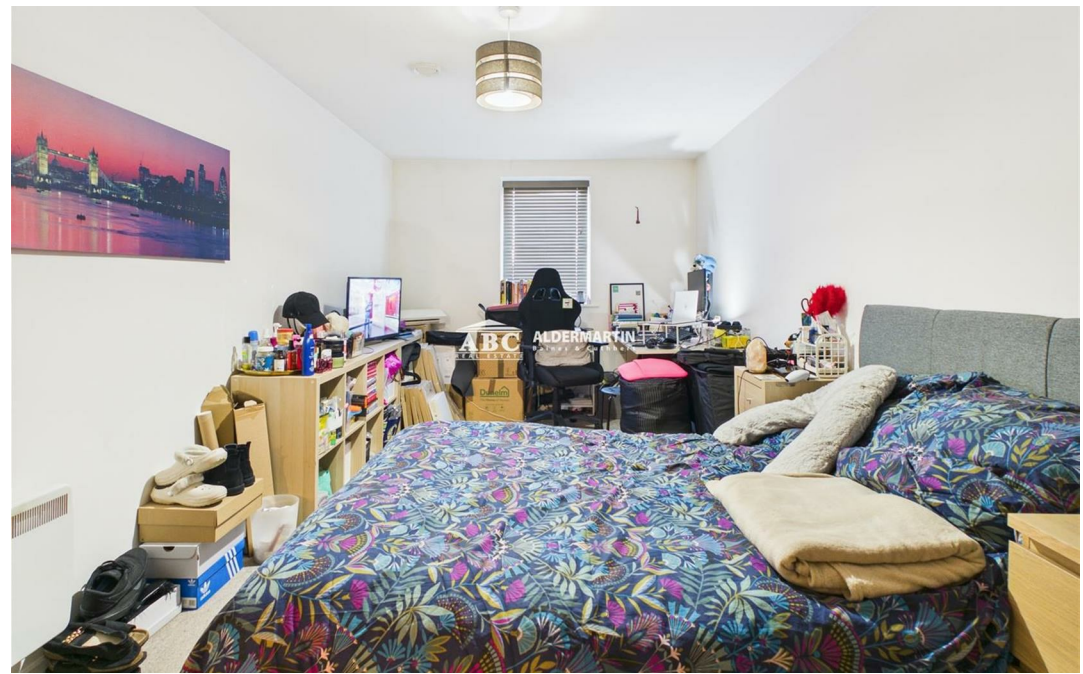
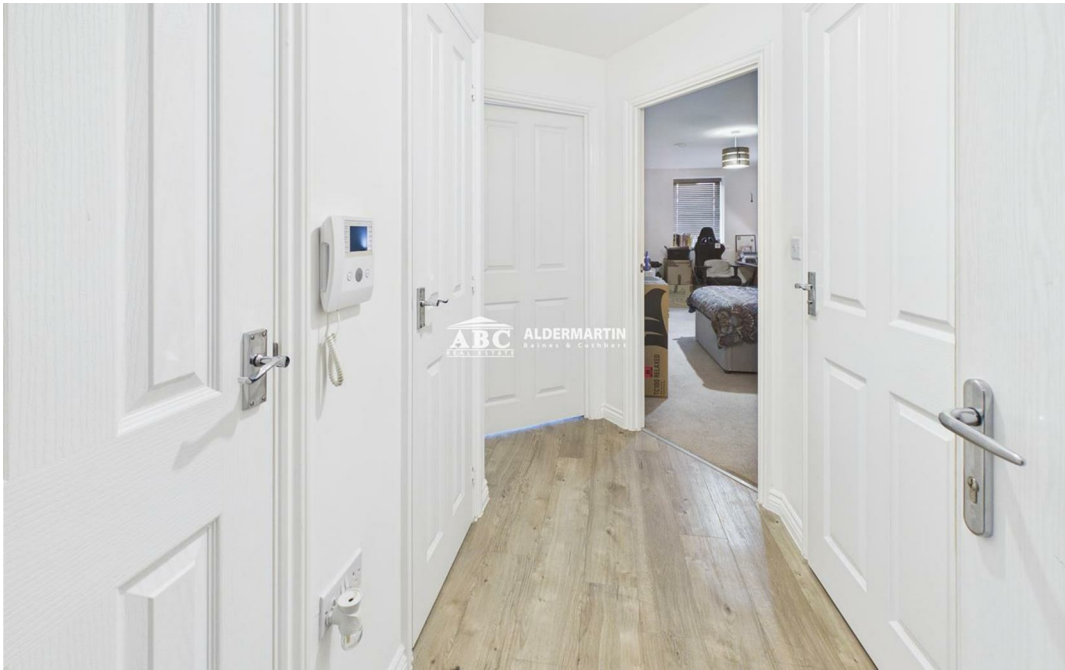




Manor Way, Borehamwood WD6 1BZ

£299,950
Leasehold



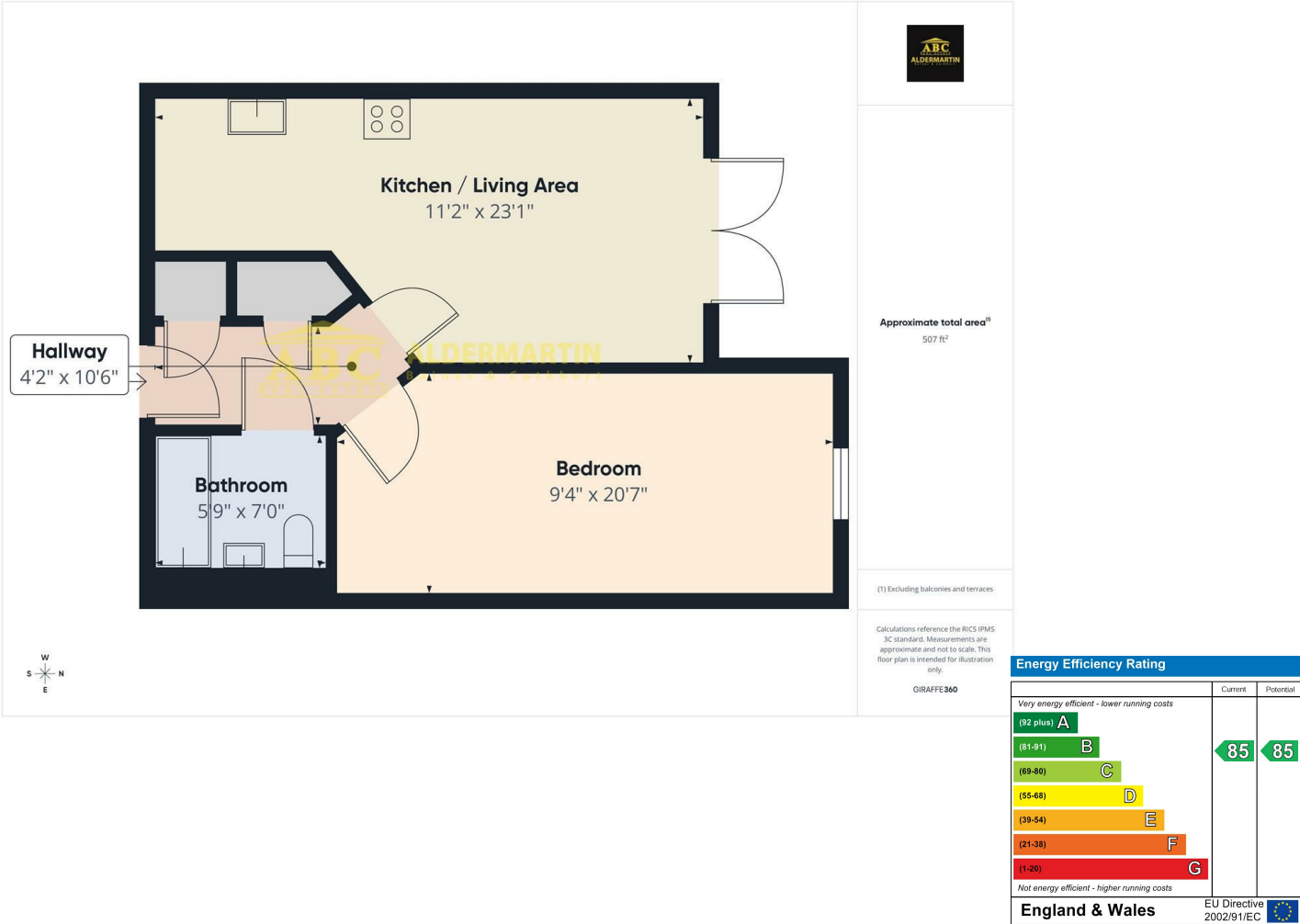


- LARGE ONE BEDROOM FLAT
- EPC RATING B - COUNCIL TAX BAND C
- BALCONY

- CENTRAL LOCATION
- COMMUNAL GARDENS
- GREAT FIRST TIME PURCHASE OR INVESTMENT

- CLOSE TO LOCAL AMENITIES
- ALLOCATED PARKING + LIFT
- GOOD DECORATIVE ORDER

This large one bedroom flat is located in Borehamwood, very close to all of the area's local amenities, and offered in exceptional decorative condition. There is a spacious fitted kitchen opening to the large living area, which in turn leads to a balcony. It is an ideal first purchase, or buy-to-let investment and we recommend viewing at the earliest opportunity.



ABC Hendon Sales
020 8203 4567

