



Cambray Road, SW12

£2,200 Per calendar month

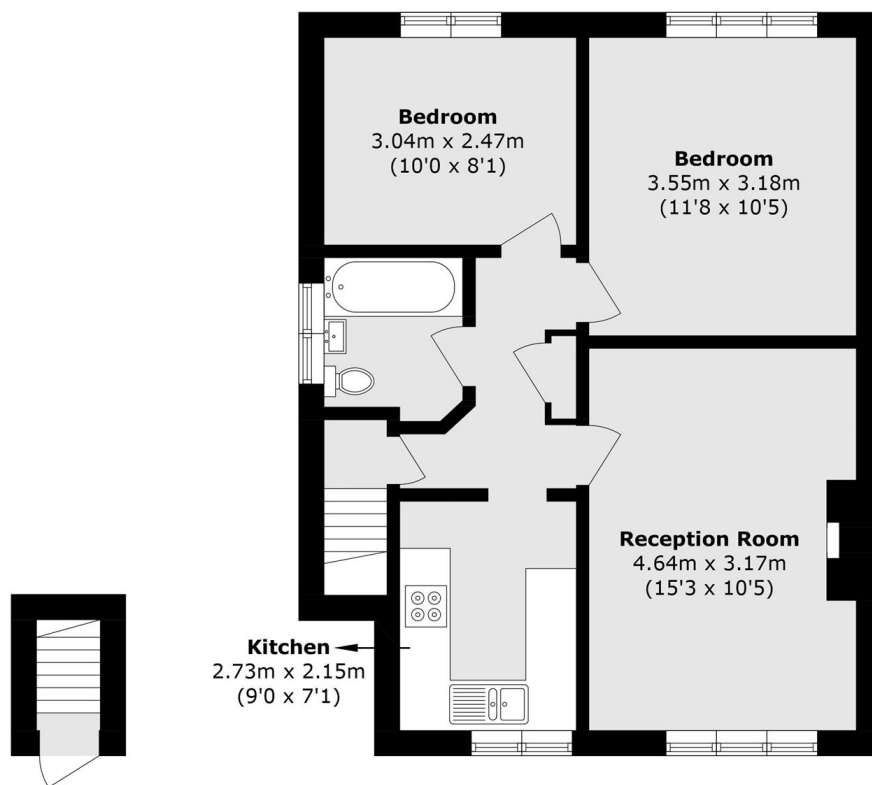
This recently decorated purpose built maisonette comprises two double bedrooms, a large living area and a separate kitchen. There is wooden flooring throughout and the property has it's own private garden.

Situated on the doorstep of Tooting Bec Common and close to the many shops, restaurants, bars and leisure facilities of central Balham. Also nearby Balham overground/underground.

Features

Two Double Bedrooms
Large Reception Room
Separate Kitchen
Wooden Flooring Throughout
Private Garden

Cambray Road, London, SW12



Ground Floor

First Floor

Total area (approx.): 51.7 sq. m (556.4 sq. ft)