

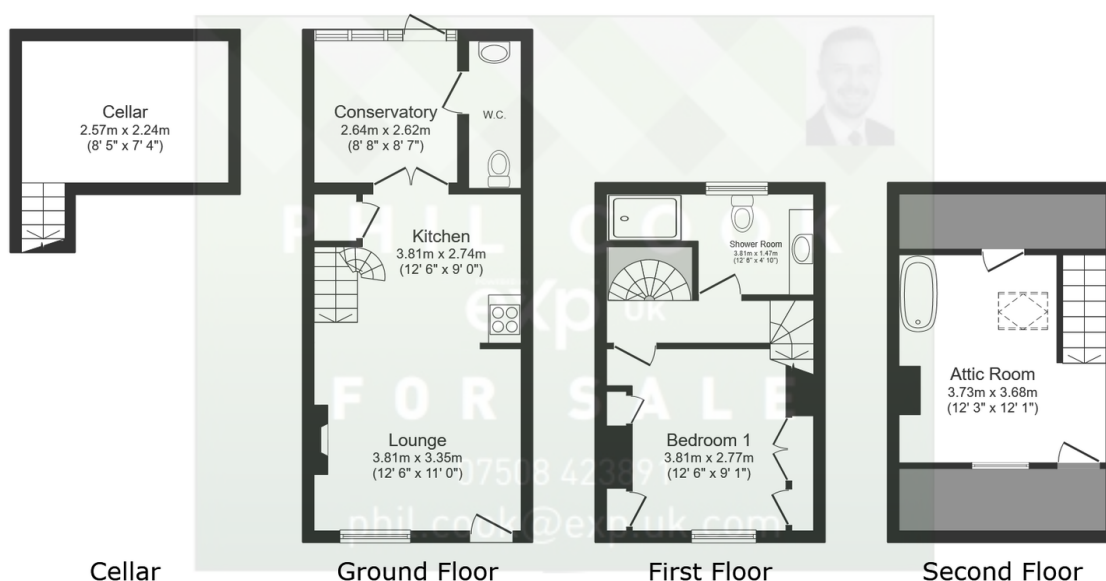
18 Leswell Lane, Kidderminster

Guide Price £175,000

2 1 2



- Quote Reference PC0649 Agent : Phil Cook
- Excellent Presentation Throughout
- Lounge, Kitchen, Conservatory, Down Stairs W.C.
- Shower Room
- Early Viewing Advised to Avoid Missing Out!
- Lovely Cottage Style Terraced Home Near to Town
- Cul De Sac Location with Easy On Road Parking
- Double Bedroom Plus Attic Room
- Mature Courtyard Garden
- Hit the 'Request Details' or 'Email Agent' button to secure your viewing now!



Total floor area: 84.1 sq.m. (905 sq.ft.)

This floor plan is for illustrative purposes only. It is not drawn to scale. Any measurements, floor areas (including any total floor area), openings and orientations are approximate. No details are guaranteed, they cannot be relied upon for any purpose and do not form any part of any agreement. No liability is taken for any error, omission or misstatement. A party must rely upon its own inspection(s). Powered by www.Propertybox.io

Quote Reference PC0649. Hit the 'Request Details' or 'Email Agent' button to secure your viewing now! A cottage style mid-terraced property in a quiet residential location close to local amenities, the town centre and the railway station. The property is well presented with a characterful and creative decor and consists of a lounge opening to a kitchen, conservatory and a cellar, downstairs W.C. There is a first floor double bedroom, shower room plus an attic room to the second floor with a roll top bath. Rear courtyard garden with patio and planting, double glazed

PHIL COOK



@ phil.cook@exp.uk.com

philcook.exp.uk.com

07508 423 891

and fully centrally heated. Early viewing is highly recommended to get the opportunity to acquire this property. Hit the 'Request Details' or 'Email Agent' button to secure your viewing now!