

84 Northfield Avenue, London, W13 9RR

020 8840 5151



Freehold / House - End Terrace

St. Kilda Road

£1,175,000

A substantial five double bedroom end of terrace house with a West facing garden, close to several outstanding local schools and transport links including the Elizabeth Line.

- Five double bedrooms
- Edwardian end of terrace house
- Measuring circa 1800 sq. ft
- West Facing garden
- Downstairs WC
- Close to several outstanding schools + Elizabeth Line



Freehold / House - End Terrace

St. Kilda Road, W13 9DE

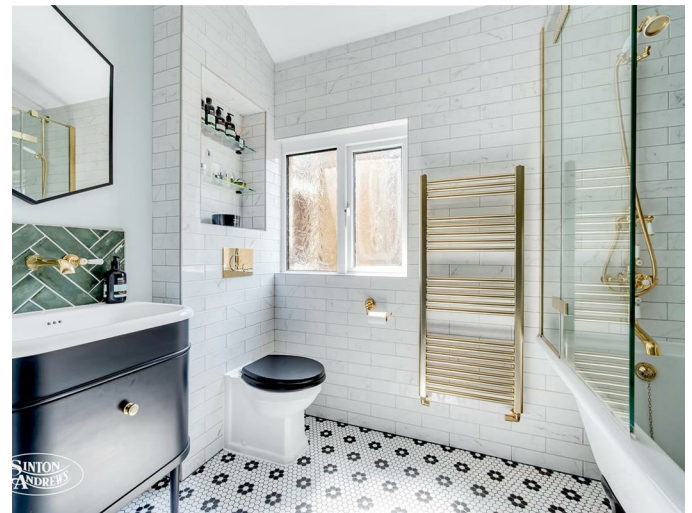
£1,175,000

With high ceilings, period details and measuring over 1800 sq. ft, this impressive Edwardian house is arranged over three floors and is presented in excellent condition throughout.

The ground floor features a beautifully appointed through living room, with a fabulous fireplace, high ceilings and a large bay window. The open plan kitchen is at the rear of the house, creating a wonderful entertaining space. French doors from the kitchen open onto a secluded West facing garden. The very useful downstairs WC completes the ground floor.

Up onto the first floor there's three generous size double bedrooms and a stylish family bathroom. The top floor has been superbly converted, which now boasts two bedrooms (one of which is currently being used as an office), an en suite shower room, and plenty of additional storage space.

Situated in a highly sought-after family friendly location close to a variety of shopping options and public transport links such as West Ealing Station (Elizabeth Line) and Northfields Station (Piccadilly Line). For families, local schools include Fielding and Oaklands Primary as well as Elthorne High, all of which received an outstanding Ofsted rating.

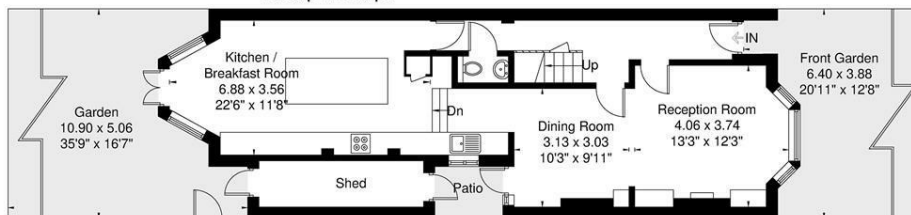
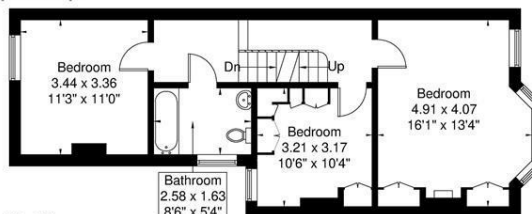


St Kilda Road

Approximate Gross Internal Area = 151.7 sq m / 1631 sq ft
 Eaves Storage / Reduced Headroom = 19.4 sq m / 208 sq ft
 Total = 171.1 sq m / 1839 sq ft

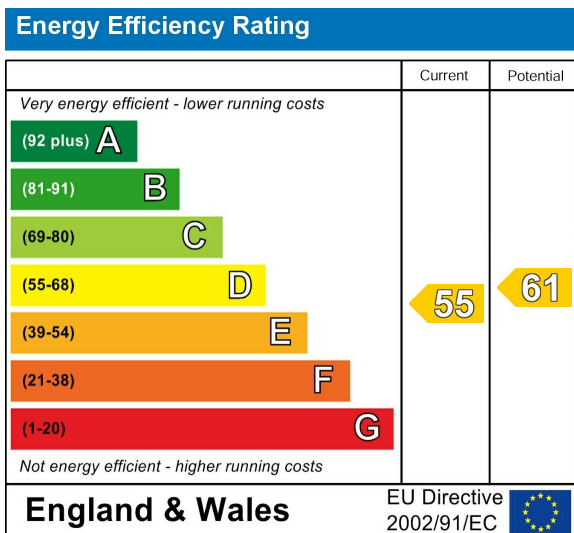


= Reduced headroom below 1.5m / 5'0"



Although every attempt has been made to ensure accuracy, all measurements are approximate. The floorplan is for illustrative purposes only and not to scale.
 © www.perspective.co.uk

Energy Performance Graph



Call us on

020 8840 5151

northfieldsales@sintonandrews.co.uk

www.sintonandrews.co.uk

Agents Note: Whilst every care has been taken to prepare these particulars, they are for guidance purposes only. All measurements are approximate and are for general guidance purposes only and whilst every care has been taken to ensure their accuracy, they should not be relied upon and potential buyers are advised to recheck the measurements.