

## Seymour Place, W1H

£1,154 Per week

A refurbished three bedroom apartment on the second floor, with lift, of a portered building on Seymour Place. The property has a good sized reception, separate modern kitchen, three bedrooms and two bathrooms.

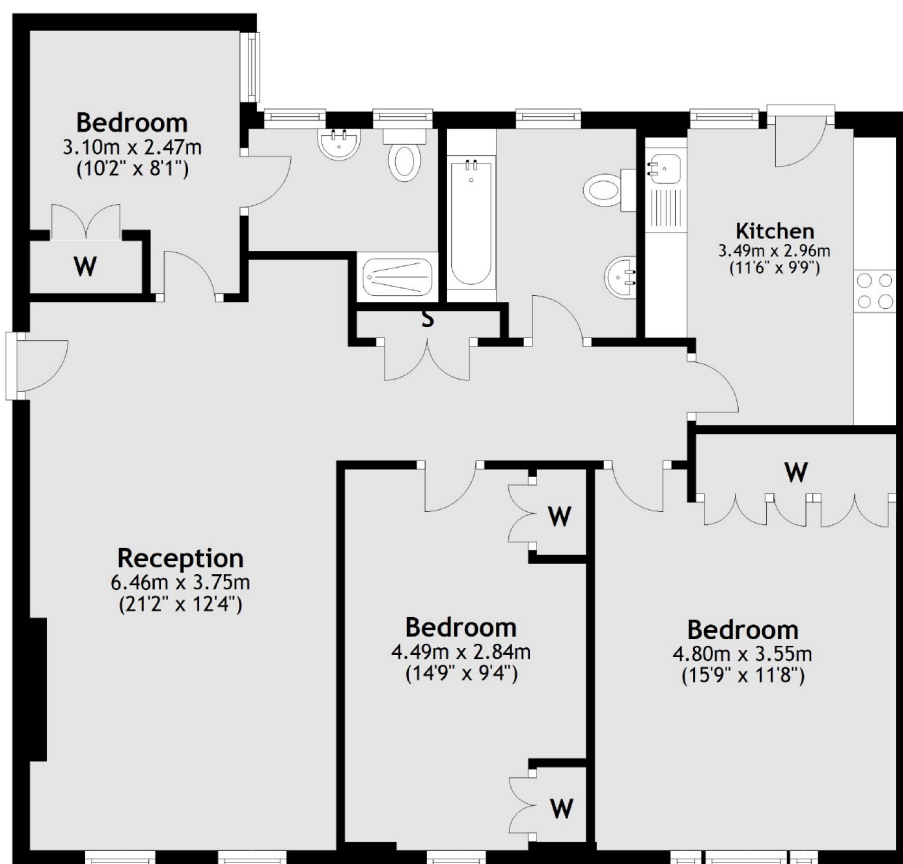
Seymour Place is close to the shops, bars and restaurants of Portman Village and Marylebone Village, both a favourite with locals providing a village vibe in the heart of central London.

### Features

Second Floor  
Modern  
Lift And Porter  
Three Bedrooms  
Two Bathrooms  
Separate Kitchen

# Seymour Place, London, W1H

## Second Floor



Total area: approx. 89.3 sq. metres (961.1 sq. feet)