



## Collingham Gardens, SW5

£495 Per week

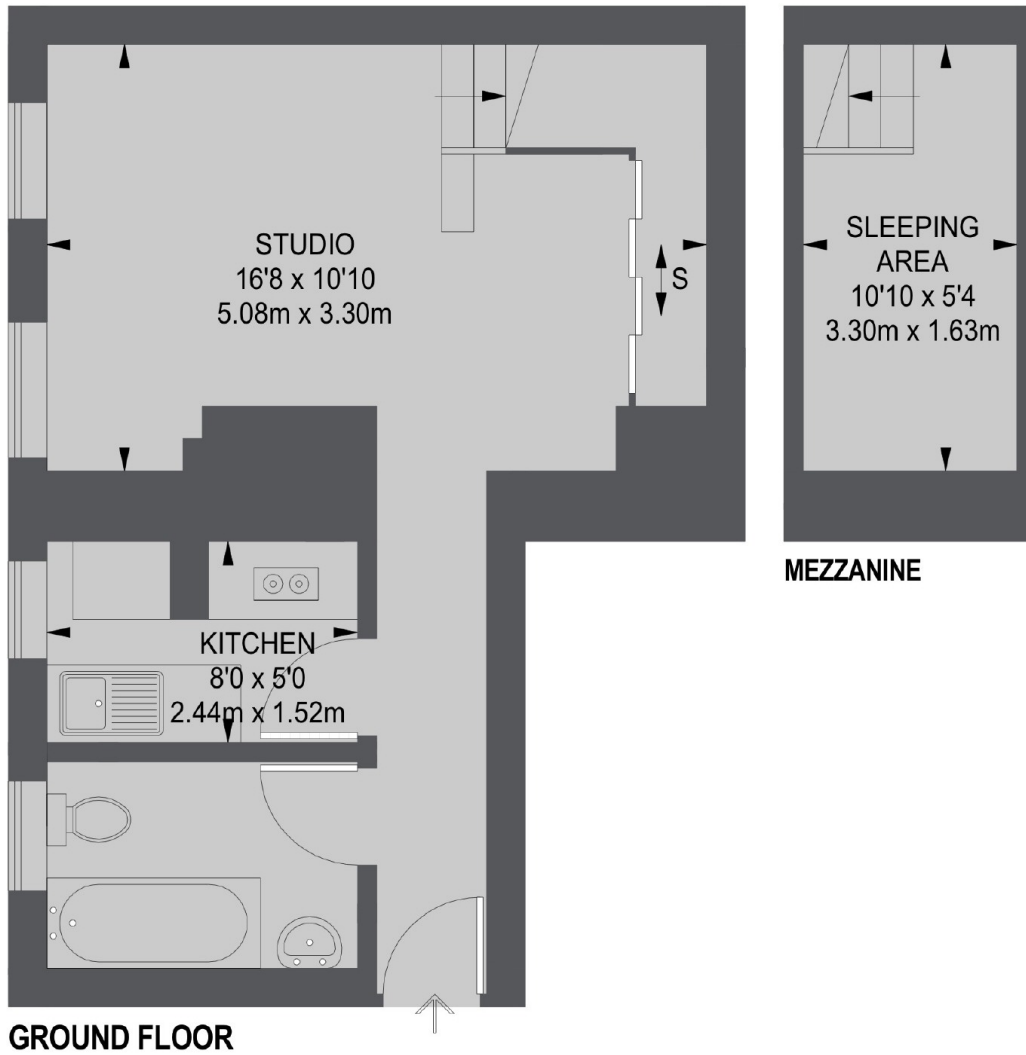
A well presented studio apartment in a period conversion. The property comprises reception room with separate mezzanine sleeping area, fully fitted separate kitchen and bathroom.

The apartment is ideally situated in Collingham Gardens which is conveniently located near to a variety of amenities close to Gloucester road and has excellent transport links.

### Features

Attractive Ground Floor Studio  
Sleeping Area or Mezzanine  
Level  
Communal Garden Access  
Contemporary Finish  
Modern Bathroom  
Beautiful Building

# Collingham Gardens, London, SW5



TOTAL APPROX. FLOOR AREA  
382 SQ. FT. (35.53 SQ. M.)