



Haslemere Road, London - N21 3AA  
£1,650 PCM

**DAVID  
ANDREW** | your  
most  
valuable  
asset

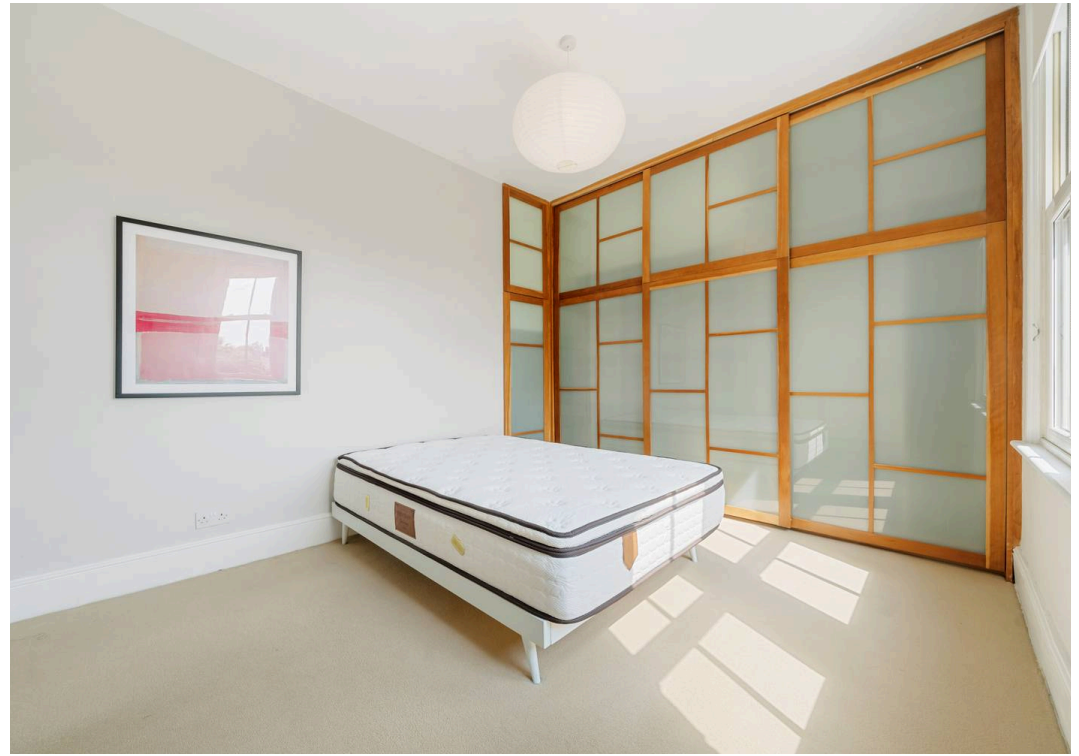
This charming one bedroom apartment offers a welcoming blend of comfort and style, thoughtfully arranged across 44 sq mt (473 sq ft).

The spacious living area is complemented by good natural light, creating a bright and inviting atmosphere throughout. A separate fully fitted modern kitchen provides ample space. The bedroom is generously proportioned, and the stunning bathroom features contemporary fixtures and fittings. With plush carpets underfoot and tasteful furnishings included, this apartment is ready to move into.

Located within easy reach of local amenities and just a short walk from Winchmore Hill Overground Station, commuting and daily errands are effortlessly convenient. The landscaped grounds provide a pleasant green outlook and a sense of tranquillity, rarely found so close to the heart of Winchmore Hill. Offered furnished and available 24th of August.

- One Bedroom Apartment
- Comprising 44 sq mt / 473 sq ft
- Separate Fully Fitted Modern Kitchen
- Custom Built & Ample Storage
- Stunning Bathroom
- Carpets Throughout
- Good Natural Light
- Walking Distance from Winchmore Hill Overground Station
- Offered Furnished
- Available 24th of August



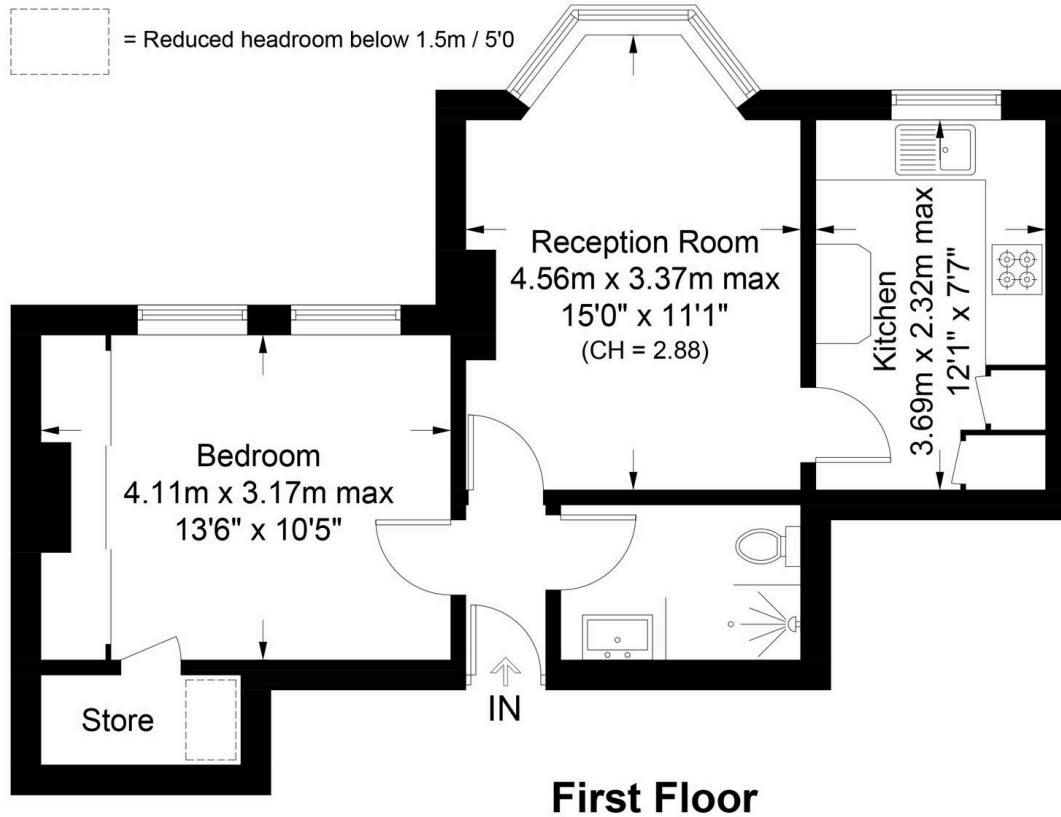




# Haslemere Road, London, N21

Approximate Gross Internal Area = 474 sq ft / 44.0 sq m  
(Excluding Reduced Headroom)  
Reduced Headroom = 5 sq ft / 0.5 sq m  
Total = 479 sq ft / 44.5 sq m

**DAVID ANDREW** | your most valuable asset



### Archway Office

671 Holloway Road  
London, N19 5SE

T (0)20 7619 3750

### Highbury Office

90 Highbury Park  
London, N5 2XE

T (0)20 7354 9111

### Finsbury Park Office

167 Stroud Green Road  
London, N4 3PZ

T (0)20 7281 2000

### Property Management Office

235 Blackstock Road  
London, N5 2LL

T (0)20 7354 9222

*scan to book a viewing*



**Certified Property Measurer**

This plan is for layout guidance only. Not drawn to scale unless stated. Windows and door openings are approximate. Whilst every care is taken in the preparation of this plan, please check all dimensions, shapes and compass bearings before making any decisions reliant upon them. (ID1222643)



has been exercised in the of these particulars, out the property must not be as representations of fact. Prospective applicants and rely upon their own d those of professional s. David Andrew Estates bility for any error contained in these particulars.

