



# BROOMFIELD RIDE

Oxshott, Surrey, KT22



# SIX BEDROOM DETACHED HOME FOR SALE IN OXSHOTT, KT22

Set within the prestigious and highly sought-after private Crown Estate, this chain-free detached family residence occupies a beautifully secluded plot of approximately 0.74 acres.



Local Authority: Elmbridge Borough Council

Council Tax band: H

Tenure: Freehold



## DESCRIPTION

The house offers generous, well-balanced accommodation arranged over two floors. The first floor features six spacious bedrooms and four beautifully appointed bathrooms, creating an ideal layout for modern family living.

On the ground floor, four reception rooms offer excellent flexibility, equally suited to formal entertaining and day-to-day family life. The substantial kitchen/breakfast room enjoys delightful views over the rear patio and gardens, providing a bright and inviting space at the heart of the house.

The accommodation is completed by an integral three-bay garage, above which is a separate bedroom suite, ideally suited for guests, staff or multi-generational living.







The landscaped rear gardens are a particular highlight—expansive, mainly laid to lawn, and framed by mature hedging to ensure excellent privacy. A large rear terrace links seamlessly with the house and incorporates an outdoor swimming pool, creating a superb area for summer entertaining. To the front, the property is approached via secure electric gates, opening onto a sweeping in-and-out carriage driveway that provides extensive parking.

Located close to the village of Cobham with its local shops, restaurants and amenities. An excellent commuter location, the A3 is just a short drive away, providing access to central London, the M25, Heathrow, and Gatwick airports. Oxshott station, with a direct service to London Waterloo, is within walking distance.

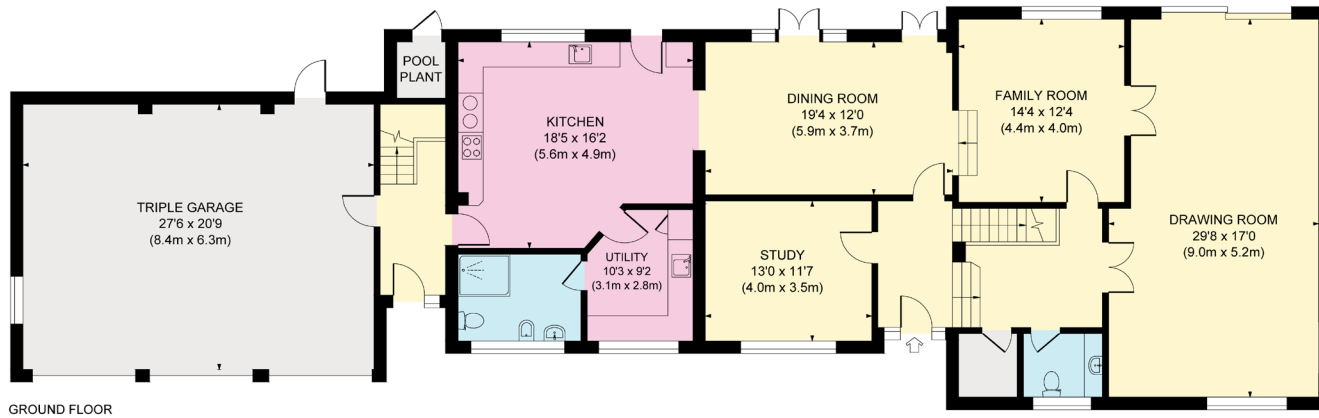
Schooling in the area is superb, with many options including Danes Hill School in Oxshott, Reeds, ACS Cobham International School, Notre Dame and Parkside in Cobham and Claremont Fan Court School in Esher.

Oxshott 0.4 miles, Esher 3.3 miles, Cobham 3.3 miles, A3 1.5 miles, M25 2.2 miles, Central London 20.4 miles (all distances are approximate)





Approximate Gross Internal Area  
4480 sq. ft / 416.23 sq. m



This plan is for layout guidance only. Not drawn to scale unless stated. Whilst every care is taken in the preparation of this plan, please check all dimensions, shapes and compass bearings before making decisions reliant upon them.

Approximate Gross Internal Area = 416.23 sq m / 4480 sq ft

This plan is for layout guidance only. Not drawn to scale unless stated. Windows and door openings are approximate. Whilst every care is taken in the preparation of this plan, please check all dimensions, shapes and compass bearings before making any decisions reliant upon them. (ID767266)



Tom Knowlden

01932 591600

Tom.Knowlden@knightfrank.com

**Knight Frank Cobham**

50 High Street, Cobham

Surrey, KT11 3EF

[knightfrank.co.uk](https://www.knightfrank.co.uk)

Your partners in property

1. Particulars: These particulars are not an offer or contract, nor part of one. You should not rely on statements given by Knight Frank in the particulars, by word of mouth or in writing ("information") as being factually accurate about the property, its condition or its value. Neither Knight Frank nor any joint agent has any authority to make any representations about the property, and accordingly any information given is entirely without responsibility on the part of Knight Frank. 2. Material Information: Please note that the material information is provided to Knight Frank by third parties and is provided here as a guide only. While Knight Frank has taken steps to verify this information, we advise you to confirm the details of any such material information prior to any offer being submitted. If we are informed of changes to this information by the seller or another third party, we will use reasonable endeavours to update this as soon as practical. 3. Photos, Videos etc: The photographs, property videos and virtual viewings etc. show only certain parts of the property as they appeared at the time they were taken. Areas, measurements and distances given are approximate only. 4. Regulations etc: Any reference to alterations to, or use of, any part of the property does not mean that any necessary planning, building regulations or other consent has been obtained. A buyer must find out by inspection or in other ways that these matters have been properly dealt with and that all information is correct. 5. Fixtures and fittings: A list of the fitted carpets, curtains, light fittings and other items fixed to the property which are included in the sale (or may be available by separate negotiation) will be provided by the Seller's Solicitors. 6. VAT: The VAT position relating to the property may change without notice. 7. To find out how we process Personal Data, please refer to our Group Privacy Statement and other notices at <https://www.knightfrank.com/legals/privacy-statement>.

Particulars dated December 2025. Photographs and videos dated December 2025. All information is correct at the time of going to print. Knight Frank is the trading name of Knight Frank LLP. Knight Frank LLP is a limited liability partnership registered in England and Wales with registered number OC305934. Our registered office is at 55 Baker Street, London W1U 8AN. We use the term 'partner' to refer to a member of Knight Frank LLP, or an employee or consultant. A list of members names of Knight Frank LLP may be inspected at our registered office. If you do not want us to contact you further about our services then please contact us by either calling 020 3544 0692, email to [marketing.help@knightfrank.com](mailto:marketing.help@knightfrank.com) or post to our UK Residential Marketing Manager at our registered office (above) providing your name and address.

