



Dawes Street.
Kent | ME7 5UQ

Dawes Street. Gillingham, Kent, ME7 5UQ

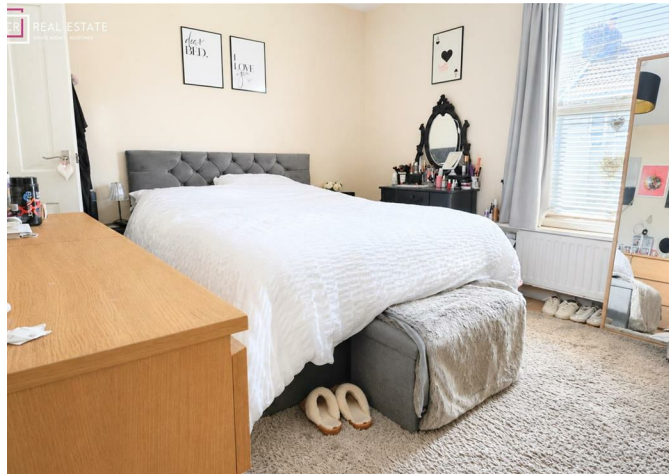
Offered to the market with no onward chain, this two-bedroom mid-terraced property is ideally suited to first-time buyers or investors alike. Conveniently located within a short walk of Gillingham town centre, the property offers spacious and well-presented accommodation throughout.

The ground floor comprises a welcoming lounge, separate dining room, fitted kitchen and a convenient cloakroom/WC. To the first floor are two generous double bedrooms, both benefiting from access to the family bathroom.

Externally, the property features an enclosed, low-maintenance rear garden, ideal for relaxing or entertaining. Additional benefits include a useful cellar providing extra storage space.

Early viewing is highly recommended.

Offers Over £240,000



Lounge

13'5 x 10'6 (4.09m x 3.20m)

Dining Room

13'5 x 10'4 (4.09m x 3.15m)

Kitchen

10'6 x 8'0 (3.20m x 2.44m)

Cloakroom/WC

3'7 x 3'1 (1.09m x 0.94m)

Cellar

13'6 x 10'6 (4.11m x 3.20m)

Bedroom

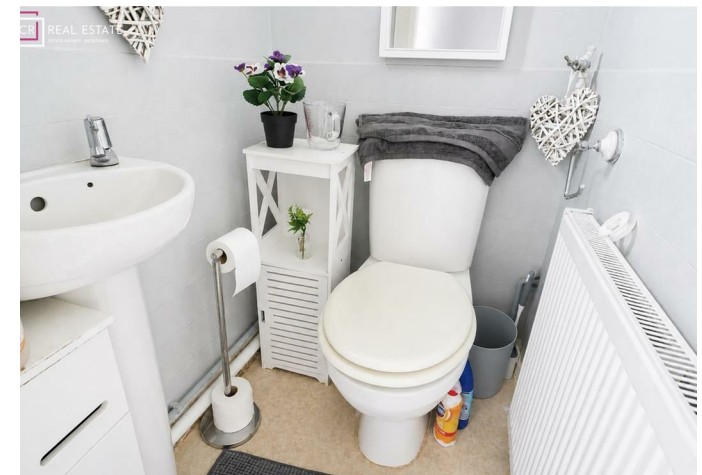
13'6 x 10'6 (4.11m x 3.20m)

Bedroomm

10'4 x 10'3 (3.15m x 3.12m)

Bathroom

10'6 x 7'11 (3.20m x 2.41m)





18 - 20 High Street
Gillingham
Kent
ME7 1BB

01634 570057

www.crr realestate.co.uk
twitter.com/CRRealEstateUK
facebook.com/CRRealEstateUK



Energy Efficiency Rating	
	Potential
Very energy efficient - lower running costs	
(92 plus) A	92
(81-91) B	
(69-80) C	73
(55-68) D	
(39-54) E	
(21-38) F	
(1-20) G	
Not energy efficient - higher running costs	
England & Wales	EU Directive 2002/91/EC

Environmental Impact (CO ₂) Rating	
	Potential
Very environmentally friendly - lower CO ₂ emissions	
(92 plus) A	
(81-91) B	
(69-80) C	
(55-68) D	
(39-54) E	
(21-38) F	
(1-20) G	
Not environmentally friendly - higher CO ₂ emissions	
England & Wales	EU Directive 2002/91/EC

CR Real Estate endeavour to maintain accurate depictions of properties in Virtual Tours, Floor Plans and descriptions, however, these are intended only as a guide and purchasers must satisfy themselves by personal inspection.