



**Station Road, Evesham, WR11 8UP**

**SHELDON  
BOSLEY  
KNIGHT**

LAND AND  
PROPERTY  
PROFESSIONALS

# Property Description

Discover exclusive lodge living at Willow Park, a secure gated development set in the charming village of Salford Priors, on the edge of the Cotswolds. With just a few plots left, now is the time to secure your place in this sought-after community.

Offering private driveways, spacious gardens, and ultra-fast fibre broadband, Willow Park blends countryside tranquillity with modern convenience.

Enjoy the best of both worlds—peaceful surroundings with excellent local amenities and strong transport connections close by.

Don't miss your chance—contact us today to arrange your viewing!



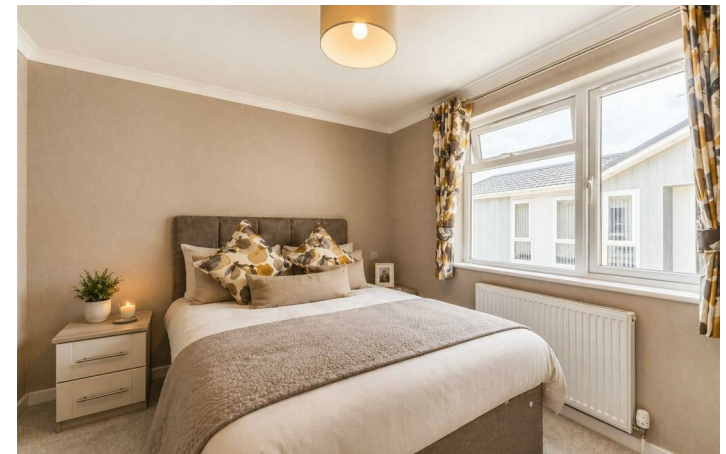
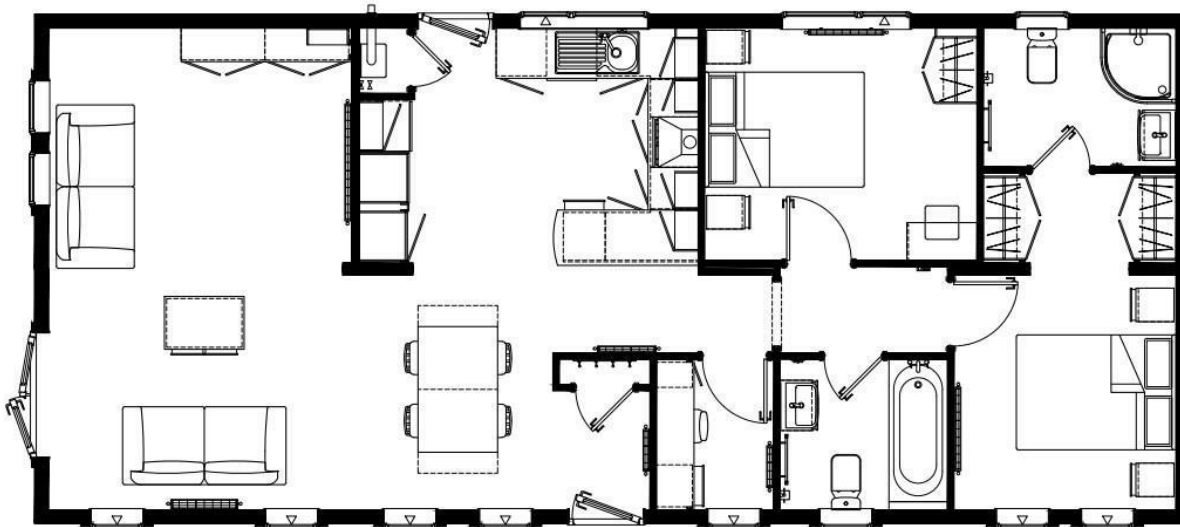


# Key Features

- OPEN 12 MONTHS OF THE YEAR
- 50 Year License agreement
- Bespoke lodges created to your specification
- Fully Furnished
- 2025 Omar New market
- CCTV, onsite Care Taker giving overall peace of mind
- Premium Plot Overlooking pond
- Pet Friendly
- Open 365 days per year
- Great Transport links

**Guide Price**  
**£259,000**





EPC Rating -

Tenure - Leasehold

Council Tax Band - New Build

Local Authority



We routinely refer clients to both our recommended legal firm and a panel of financial services providers. It is your decision whether you choose to deal with these companies. In making that decision, you should know that we receive a referral fee.

**SHELDON  
BOSLEY  
KNIGHT**

LAND AND  
PROPERTY  
PROFESSIONALS